

# **Relocation of electrical box to secondary distribution box**





## Relocation of electrical box to secondary distribution box

---

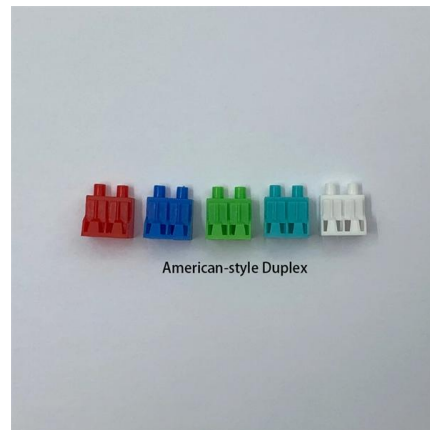


### Is it possible to move a consumer unit, how is it done?

Where moving a consumer unit would leave cables buried in the walls, the cables must be relocated or a junction box installed on the surface of the wall to indicate

### How to Relocate Your Electrical Panel: Steps & Costs

A detailed guide on electrical panel relocation: step-by-step process, cost factors, legal requirements, and pitfalls to avoid for a safe, compliant move.



### Electrical Panel Relocation: Guide, Costs & Expert Tips

Our detailed guide takes you through a 7-step process of electrical panel moving, offers a clear cost breakdown, expert advice, and answers to frequently asked questions. Make a well

### Quora

Hier sollte eine Beschreibung angezeigt werden, diese Seite lässt dies jedoch nicht zu.



### The Meaning and Function of Primary, Secondary, and Tertiary

Follows the principle of "one machine, one switch, one RCD, one box, one lock," ensuring no single switch controls multiple devices. This explanation aims to clarify the roles and functions of

### Specifications for Electrical Underground Distribution Systems for Pad

Specification DDS-4 UG Revision 12, December 2022 ONCOR ELECTRIC DELIVERY COMPANY SPECIFICATIONS FOR ELECTRICAL UNDERGROUND DISTRIBUTION SYSTEMS FROM



### Home Electrical Wiring , Extending Circuits for a Panel

Electrical junction box splices can be made safely when you understand the method. This example will show you how its done step by step and shows how to make a



## How To Wire A Separate Building To A House's

If you have an outbuilding or detached garage, you may wish to install electricity to make the space more livable. A common method of doing this is by



190X95X25mm



## The Meaning and Function of Primary, Secondary, and Tertiary

The terms primary, secondary, and tertiary distribution boxes are relative. Let's make an example for clarity: A newly constructed residential area introduces a 10kV power line to a substation. From the

## How much does it cost to move an electrical panel?

Average cost to relocate an electrical panel The average cost to move an electrical panel is \$1,000 to \$4,000, depending on the panel type and how far



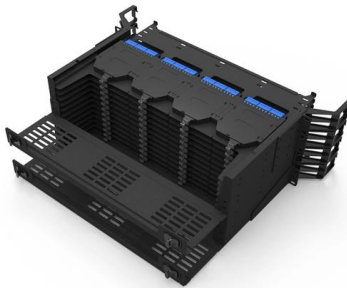
## What are the key steps involved in relocating a circuit breaker box

Looking to relocate a circuit breaker box? Discover the key steps involved in this process, including planning, disconnecting power, rerouting wiring, and ensuring compliance with safety regulations.



### Can you relocate a breaker box alone?

With their expertise, they can minimize disruptions, complete the project in a timely manner, and ensure a properly functioning electrical system. While it may be tempting to relocate a breaker box alone to



### electrical

One alternative might be to make the old panel a subpanel of the new one, at least as an initial cut-over stopgap. Though I put my new panel where the old one was specifically to avoid

### Three-Tier Power Distribution System in a Newly Constructed

Learn about the three-tier power distribution system (main secondary tertiary distribution boards) in a new residential area including their roles connections and safety measures for 0.4kV power supply.



### Relocate existing Electricity Supply - City of Tshwane

Application to relocate existing Electricity Supply  
Relocation of a metering kiosk: two-way to 12-way meter boxes  
Relocation of a street pole within an overhead reticulated area  
Relocation of a street

I would like to move 8 x 20A circuits (room lights, ceiling fans, outlets in the bedrooms, and living room), and 1 x 50A (AC) circuit from left main panel to



### **Meter Box Relocation**

Meter Box Relocation - Jim's Electrical qualified Electrician's METER BOX RELOCATION/UPGRADE Meter Boxes may need to be re-located and upgraded

### **Switchboard & Meter Box Relocation Sydney**

Next Level Electricians leads the way in the safe relocation of meter boxes or switchboards for the residential and the commercial property. If you are planning a major renovation or new build and you



### **How to Move an Electrical Box Safely and Legally**

Relocate electrical boxes safely and legally. Expert guide covering required planning, code adherence, and wire management techniques.



## Can an electrical panel be moved?

However, circumstances may arise where relocation of the electrical panel becomes necessary. This article aims to explore whether an electrical panel can be moved



## What You Should Know About Relocating Your

Discover the essential steps and considerations for a successful switchboard relocation. Learn what to expect and how to ensure a smooth transition.

## Moving An Electrical Panel: Things You Should Know

Following this step-by-step guide, you can safely relocate your panel



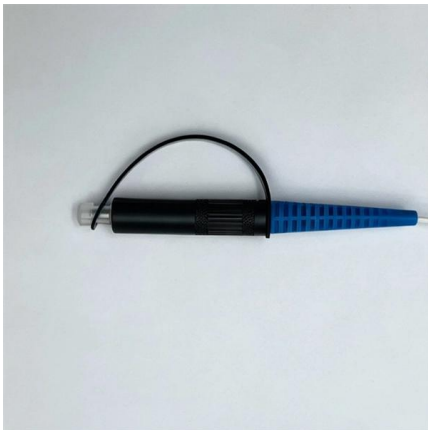
## Home Electrical Wiring , Relocating an Electrical Service Panel

I would like to gut old panel and use it as junction box and install new panel box in safe location. How to Splice Electrical Cables for an Electrical Panel.



### **Moving electrical panel. Do I need to rewire all circuits?**

We are planning a large remodel in our home. As part of creating a basement apartment we have to relocate the electrical panel so that it's accessible to us as well as the tenants. We will do



### **How To Install A Second Circuit Breaker Box From The**

When you run out of space in your electrical service panel (also called a breaker box), you have two choices: have a professional upgrade the service

### **How To Move Electrical Box , Storables**

Learn how to safely and efficiently move an electrical box with our helpful articles and tutorials. Master the process step by step and ensure a



### **What are the steps to relocate a circuit breaker box?**

Follow these steps: Planning for Safety: Plan the relocation, prioritizing safety and accessibility in the new location. Consider any potential hazards or obstacles before proceeding. Power Shutdown:



## Secondary LV/MV distribution substations in a nutshell

The installation comprises secondary distribution substation at the point of entry, with MV cables to supply subsidiary



## Electrical Switch Box Relocation: A Comprehensive Guide

This article will explore the reasons for moving electrical switch boxes, the basic procedure involved, potential challenges and solutions, and emphasize the

## Contact Us

---

For datasheets, pricing, or custom high-speed optical interconnect solutions, please visit:  
<https://www.syropy.com.pl>