

Relay Protection Differential Current Conversion





Relay Protection Differential Current Conversion

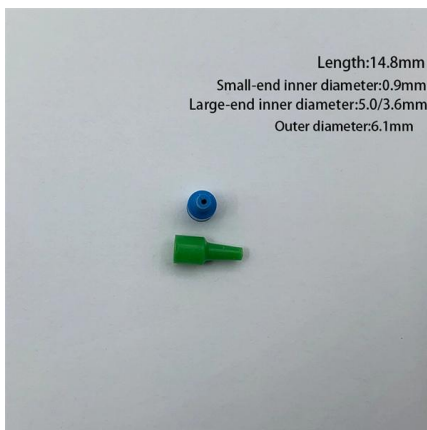


application & setting guide_RET54_Diff6T_ENa.fm

Further, the document deals with differential protection of three-winding power transformers, frequency converter supply transformers, generator-transformer block and differential protection of short cable

865 Differential Protection Relay

The differential relay shall be used for selective differential overcurrent, short-circuit protection of generators, transformers and motors in solidly or impedance grounded (earthed) power systems.



Differential Relay

In current differential relay two current transformers are fitted on the either side of the equipment to be protected. The secondary circuits of CTs are

Chapter 8: Differential Protection , GlobalSpec

8.1 General Differential protection functions when the vector difference of two or more similar electrical magnitudes exceeds a predetermined value. Almost any type of relay can function as differential



Testing Transformer Differential Protection

2.2 Operating Characteristic The objective of differential protection is to protect the transformer against internal faults that develop such as a short circuit on a winding. For an internal

Three basic principles of differential protection you

Generators, motors, transformers & lines The three basic principles of differential protection explained in this article, which has been known for decades,



How Differential Protection Works And ANSI Code

Modern relays use Percentage Differential Protection (or Biased Differential) to maintain stability during external faults and transient conditions like





Percentage Differential Relay or Biased Differential

Percentage differential relay or Biased Differential Protection: Generally differential protection relay means the relay operates when the phasor difference between

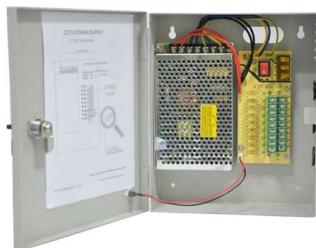
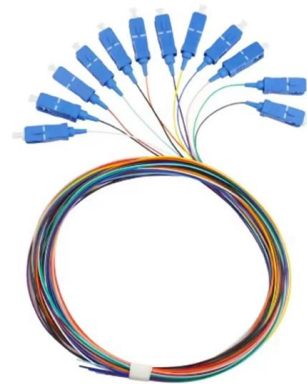


Differential Relaying 101

High-impedance differential relaying is a variation of current differential relaying that uses a high-impedance relay to detect faults. This type of relaying is particularly useful in applications

Understanding Differential Protection Relay: How it Works and its

The differential protection relay is connected to both ends of the equipment, and it measures the current flowing through each end. If the current differential between the two ends



Modern Line Current Differential Protection Solutions

Abstract--Line current differential protection creates challenges for relay design and application. From a design perspective, the distributed nature of the line current differential system



Differential Relay & Its Types

The relay compares the two currents and sends a trip signal to the circuit breaker if the difference exceeds a predetermined set value. The circuit



Design and evaluation of a current differential relay for transformer

The paper proposes a current differential protection relay for transformers. The relay uses the same restraining current as a conventional relay, but the differential current is modified to compensate for

Differential Protection for Motors , Delgado Relay Protection Reference

The differential protection relay will compare these two values and look for a difference exceeding the pickup current threshold. If a fault occurs inside the motor causing the current leaving



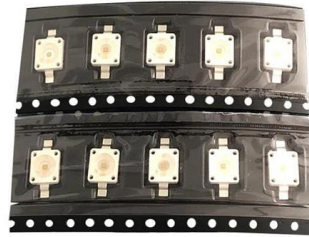
Transformer Differential Protection Scheme

Specific events can induce a significant differential current to flow in



Conversion And Subtraction part of differential protection relay

While publications [5, 6] focuses on simulating differential protection for stator winding generator and transformers; focuses on modeling of a distance relay.



CURRENT, VOLTAGE, DIRECTIONAL, CURRENT (OR VOLTAGE)

3 CURRENT, VOLTAGE, DIRECTIONAL, CURRENT (OR VOLTAGE)-BALANCE, AND DIFFERENTIAL RELAYS Chapter 2 described the operating principles and characteristics of the basic relay

Transformer Differential Protection Scheme

Percentage restraint differential protective relays have been in service for many years. Figure 1 shows a typical differential relay connection diagram.



Differential Protection in Electric Power Systems

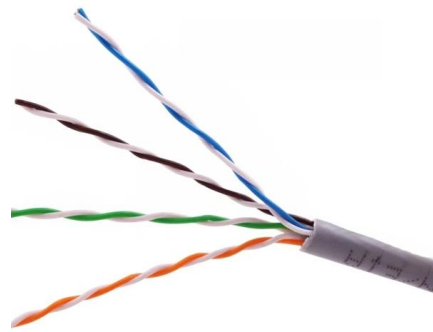
Explore advanced differential protection strategies for relay protection engineers in electric power transmission.





Unit Protection Differential Relays

Differential protection is a fast, selective method of protection against short circuits. It does not need coordination with other relays, however, it takes to have backup protection.



Differential Relay , How it works, Application & Advantages

A differential relay is a protective device that detects imbalances in incoming and outgoing currents, safeguarding transformers, generators, motors,

Introduction to Transformer Differential Protection

Transformer Differential Protection Objectives
Explain challenges of transformer differential protection
Understand need for tap, phase, and zero-sequence compensation and how they work
Understand



Differential Protection: How It Works

Differential protection is a power system relay method that compares current entering and leaving a protected zone. When the difference is large enough to indicate an internal fault, the relay



How Differential Protection Works And ANSI Code

A differential protection scheme (using a differential relay) is a highly sensitive and selective form of protection used to detect internal faults within a



LoRa handheld portable base station

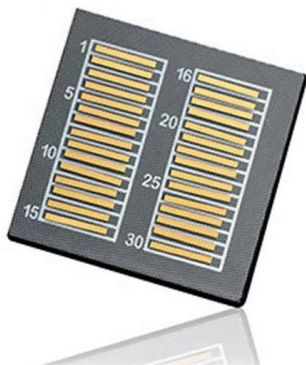


TRANSFORMER DIFFERENTIAL CALCULATION

The differential slope curve is a plot of the differential current (I_{diff}) versus the restraining current (I_{bias}). The restraining current is calculated based on the currents flowing into and out of the

Motor Differential Protection , Working Principle,Function

Summary Motor differential protection is a high-performance protection scheme based on the principle of current vector difference. Its core function relies



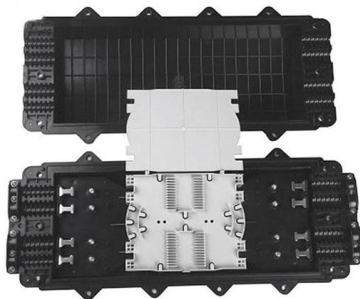
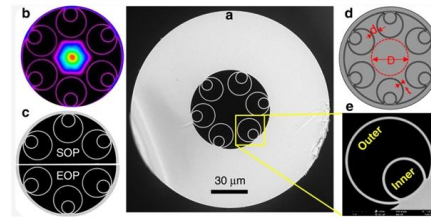
Useful Applications for Differential Relays With Both KCL and ATB 87

This paper shows how having both a KCL-based and ATB-based current differential element inside the same relay allows us to protect each zone in the proper way, therefore, removing the need for



TRANSFORMER DIFFERENTIAL CALCULATION

TRANSFORMER DIFFERENTIAL PROTECTION In the world of power system protection, transformer differential protection is a crucial safeguard, acting as a vigilant sentry for these vital components. It



Transformer Differential Protection - Voltage Disturbance

Transformer Differential Protection Scheme works by using two separate quantities calculated from the primary current (I_{W1C}) and secondary

Contact Us

For datasheets, pricing, or custom high-speed optical interconnect solutions, please visit:
<https://www.syropy.com.pl>