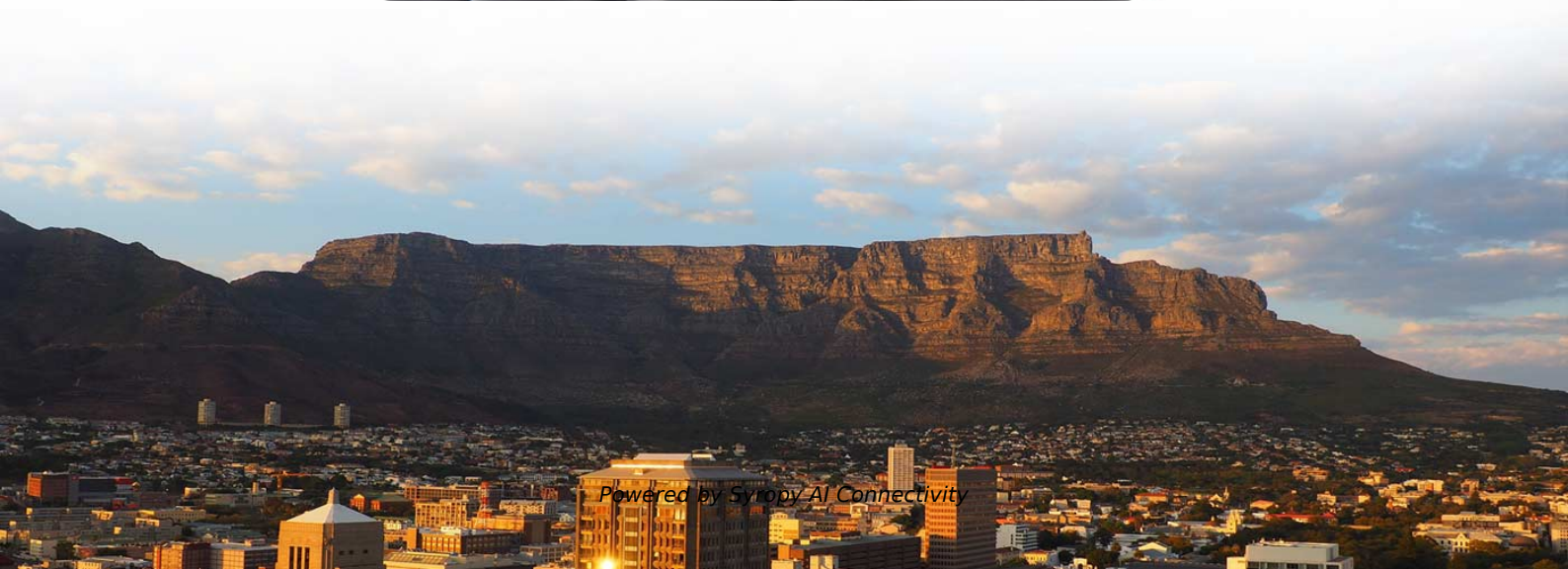


Relay Protection Action Diagram





Relay Protection Action Diagram



RGPV QUESTION PAPERS BTECH & ALL COURSES, RGPV

Hier sollte eine Beschreibung angezeigt werden, diese Seite lässt dies jedoch nicht zu.

UNIT 1 PROTECTIVE RELAYS

PROTECTIVE RELAYS PROTECTIVE RELAYING
Requirement of Protective Relaying Zones of protection, primary and backup protection
Essential qualities of Protective Relaying
Classification of



How to use Lockout Relay (master trip relay) in

Practical applications of lockout relays on mainstream switchgear and protection and adaptations in modern digital power substations.

Understanding Relays & Wiring Diagrams

A relay is an electrically operated switch. Learn how to wire a 4 or 5 pin relay with our wiring diagrams and understand how relays work.

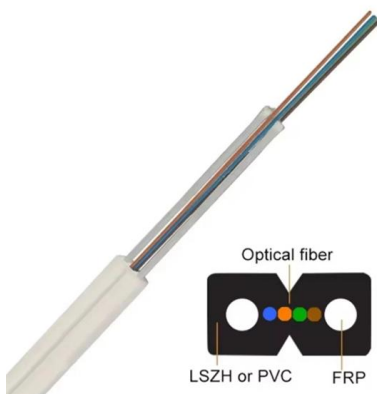


Protective Relays: Function, Features & Operation

A protective relay is basically an electrical device that detects a fault in a power system and initiates the operation of the circuit breaker to isolate the defective section or component from

Basic protection relay knowledge

A fast and selective arc fault mitigation for air-insulated LV & MV switchgear and Relion protection and control relays and sensor technology protect staff and plant facilities for many years.



Protective relay

Electromechanical protective relays at a hydroelectric generating plant. The relays are in round glass cases. The rectangular devices are test connection blocks,



Schematic Diagram Of Protection Relay

These diagrams are invaluable when designing, installing, or maintaining protection relays, helping engineers to quickly identify problems,



Protective Relay : Working, Types, Circuit & Its

In fault conditions, the electrical quantities may change like current, voltage, phase angle & frequency. The protective relay diagram is shown below. A protective

Primary and Backup Protection Working Principle

Backup protection concept Refer above scheme, here the relays C, D, G and H are primary relays while A, B, I and J are the backup relays. Normally



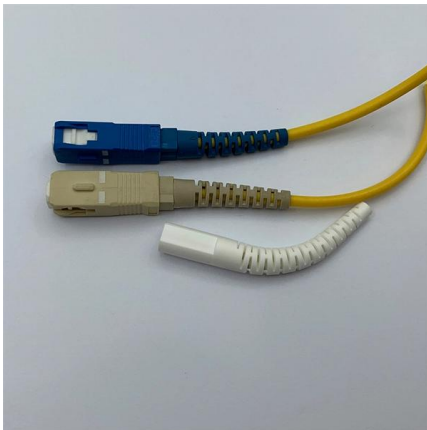
GE Multilin 859 Protection & Control Relay

Over-View Of GE Multilin 859:- The Multilin 859 Motor Protection System is a protection device for managing, protecting, and controlling medium to large



Power System Protective Relays: Principles & Practices

Protective relays and devices have been developed over 100 years ago to provide "lastline"of defense for the electrical systems. They are intended to quickly identify a fault and isolate it so the balance of



doi: 10.1007/978-3-319-20919-7_3

Rules for protecting a network using overcurrent relays. Requirements for instrumentation (number and locations of instrument transformers) and switching apparatus (number and locations of circuit

Protection Relay:Types, wiring diagram and working principle.

Protection relay is an electromechanical monitoring safety device which senses fault and provide trip signal to the breaker as per set value in LT and HT panel.



Protective Relay Basics

Traditionally, protective relays were electromechanical devices utilizing induction disk, coils, contacts, and solenoid elements to determine protective characteristics.



Schematic Diagram Of Protection Relay

Schematic diagrams of protection relays are essential tools for power engineers in the power generation, transmission, and distribution industry. They



Protective Relay : Working, Types, Circuit & Its

The protective relay diagram is shown below. Protection Relay Protective Relay Working Principle A protective relay is used to protect the device once the fault is

Understanding Protective Relays in Electrical Power Systems -

Introduction to Protective Relays Protective relays are essential devices used in electrical power systems to detect faults and abnormal conditions, initiating corrective actions to prevent equipment



Operation, maintenance, and field test procedures for

Operation, maintenance, and field test procedures for protective relays and associated circuits (photo credit: Omicron) The protection circuits



Protective Relay Basics

There are many types of protective relay functions, but this presentation will focus on the most common type, basic overcurrent device 50/51 (instantaneous and time overcurrent).



How to Create Effective Relay Logic Diagrams:

This article provides examples and explanations of relay logic diagrams, a common method used in electrical control systems. Learn how relay logic diagrams are

Protective Relay , Fundamental Requirements of

A Protective Relay is a device that detects the fault and initiates the operation of the circuit breaker to isolate the defective element from the rest of the system.



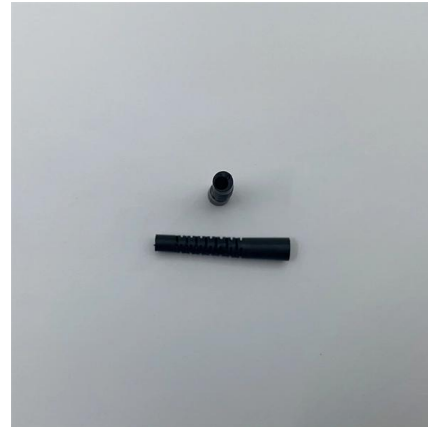
Protective Relay: Working, Types, and Applications

Learn about protective relays, their working principle, types, and applications in power systems. Discover how relays protect transformers,



What are Protective Relays?

Protective relay work as a sensing device, it senses the fault, then known its position and finally, it gives the tripping command to the circuit breaker. The circuit

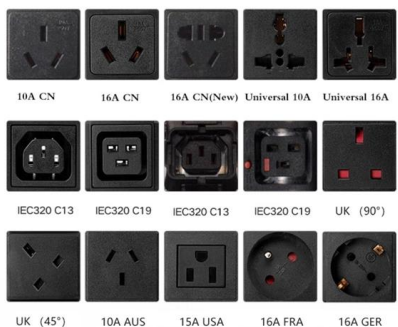


SCHEMATIC REPRESENTATION OF POWER SYSTEM RELAYING

Prepared by Working Group I5 Working Group Assignment presentation of protection and control relaying. The report will identify methodology behind these practices, present issues

Reading and Understanding AC and DC Schematics In

This technical article explains the AC/DC schematic representation of the protection and control systems used on power networks. This includes AC



Relays Part 4: The Protective Relay Basic Theory

The circuit diagram of the protective relay is made up of current transformer primary windings, current transformer secondary windings, relay operating coils, circuit breakers, and the



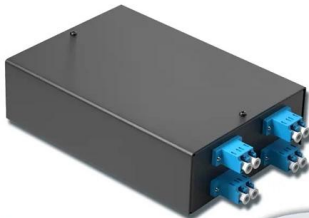
SCHEMATIC REPRESENTATION OF POWER SYSTEM RELAYING

Working Group Assignment Report on common practices in the representation of protection and control relaying. The report will identify methodology behind these practices, present



4-port 8-core LC wall-mounted fiber terminal box (empty frame)

Surface painted Scientific plate fiber Cold-rolled steel plate



Lifetime quality assurance

Free shipping

Customizable for telecommunication

The fundamentals of protection relay co-ordination and

Among the various possible methods used to achieve correct relay co-ordination are those using either time or overcurrent, or a combination of both.

Contact Us

For datasheets, pricing, or custom high-speed optical interconnect solutions, please visit:
<https://www.syropy.com.pl>