

Regulations and Requirements for Cable Installation in Cable Trays





Overview

The International Electrotechnical Commission (IEC) provides detailed guidelines for cable tray systems under IEC 61537. This standard outlines the construction requirements, testing methods, and performance parameters for cable trays and related support systems. This is a description of how to select, install, and support these metal or plastic frames, on which electrical wires are installed. The Cable Tray ng standards, performance standards, test standards and application in this document have been tested extensively by competent professional engineers completely installed, without damage either to conductors or. These systems provide an efficient and adaptable solution for managing a wide range of cables, including power cables, control cables, Ethernet, and fiber optic lines.



Regulations and Requirements for Cable Installation in Cable Trays



Cable Tray Technical Guide A practical guide to product selection and

A practical guide to product selection and installation This guide for engineers and installers has been developed by ABB as a practical reference regarding cable tray characteristics, installation, and

Installation Of Cable In Cable Trays: NEC, Safety

Discussed are the installation in tray of single and multi-conductor insulated cables with design limitations, example calculations, equipment, and equipment usage

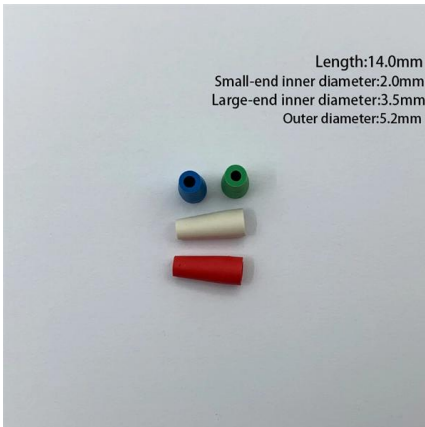


CABLE

To help flesh out these crucial details, four professionals from the electrical installation industry were asked for their views on cable tray selection. The four experts comprised a consultant,

Cable Tray Installation Rules (NEC 392) - Electrical Trader

Core rules for selecting, installing, grounding, and filling cable trays--clearances, materials, separation, and bonding explained.



Code Corner: 2023 NEC Article 690.31 (C) and (C) (2)

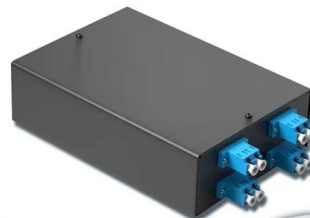
In this installment of our Code Corner series, Ryan Mayfield focuses on the 2023 National Electrical Code (NEC) changes concerning cable trays,

NEC Article 392 Guide: Ensuring Compliance for Cable

Master NEC Article 392 with our comprehensive guide. Learn essential cable tray requirements for installation, grounding, and fill capacity to

4-port 8-core LC wall-mounted fiber terminal box (empty frame)

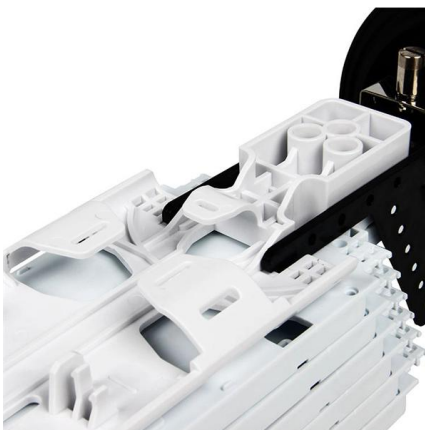
Surface painted Scientific plate fiber Cold-rolled steel plate



Lifetime quality assurance

Free shipping

Customizable for telecommunications



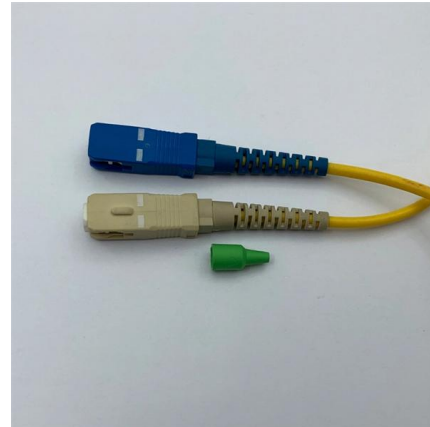
Cable Tray SHIB NAL

Provide information regarding the hazards of overloaded cable trays; Identify specific Occupational Safety and Health Administration (OSHA) regulatory requirements and National Electrical Code®



Best Practice Guide to Cable Ladder and Cable Tray Systems

This publication is intended as a practical guide for the proper and safe* installation of cable ladder systems, cable tray systems, channel support systems and associated supports.

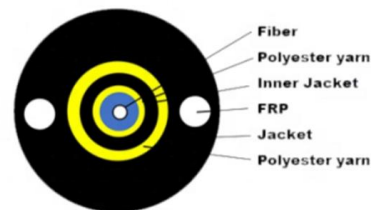


NEC Standards for Cable Trays: Grounding, Fill Capacity

This article provides a comprehensive framework that governs various aspects of cable tray installations, including the types of cables that are deemed acceptable for use, requirements for

Best Practice Guide to Cable Ladder and Cable Tray Systems

Introduction This publication is intended as a practical guide for the proper and safe* installation of cable ladder systems, cable tray systems, channel support systems and associated supports.



Best Practices for Installing Cables in Trays

Learn the best practices for installing cables in trays. This guide covers essential steps, technical requirements, and key details

Safely Installing, Maintaining and



Inspecting Cable Trays

OSHA Regulations and Industry Consensus Standards that Apply to Cable Trays The use and installation of cable trays is covered by legally enforceable OSHA regulations in 29 CFR



IEC Standard for Cable Tray: Complete Technical Guide

The International Electrotechnical Commission (IEC) provides detailed guidelines for cable tray systems under IEC 61537. This standard outlines the



Cable trays are structural components of a facility's electrical system

Since cable tray installations and the cables allowed in those trays are covered by OSHA and the NEC, the installations are also covered under BNL's Electrical Material and Installation Inspection (EMII)



Installation Standards of Cable Trays

Cable trays can provide a safe component of a wiring distribution system.the electrical continuity of the cable tray system and support for the cables is



BS 7671:2018+A4:2026, IET Wiring Regulations 18th



In-company training course Our wiring regulations' experts will come to your premises and deliver updates and training that meet your particular requirements.



Codes and Standards , Cable Tray Institute

The Cable Tray Institute is making available the current edition of this practical guide for the proper installation of aluminum or steel cable tray systems. These guidelines will be useful to engineers,

Compliance Requirements for Instrument Cable Trays

Installing instrument cable trays properly and in compliance with relevant standards is crucial to ensure safety, functionality, and durability. Below is a detailed guide



Standard for Installing Metal Cable Tray Systems

for installing electrical products and systems. NEIS are intended to be referenced in contract documents for electrical construction Metal cable tray systems for power communications cabling shall be



BS 7671: Chapter 42

Although the requirements in Chapter 42 of BS 7671:2018+A2:2022 are stated as being for particular locations of increased fire risk, the building regulations



Cable Tray Technical Guide A practical guide to product selection and

This guide for engineers and installers has been developed by ABB as a practical reference regarding cable tray characteristics, installation, and requirements.

Cable Tray Systems: Requirements and Best Practices

Comprehensive guide to cable tray systems requirements: tray types, materials, loading, supports, bonding, routing, and best practices for safe electrical cable management.



MPO-MPO Low Smoke Halogen Free Sheath
Multimode 10 Gigabit 12 pole OM4
Insertion loss <0.35dB Return loss >50dB

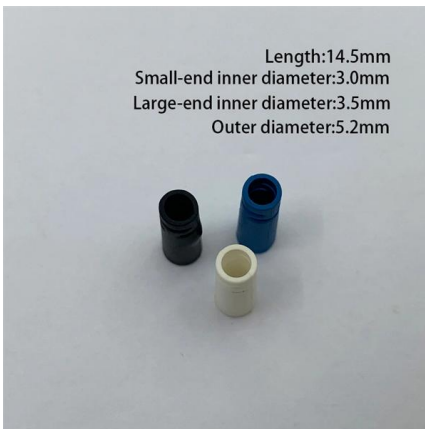
100+ Essential Questions Answered About Cable Trays:

Cable trays, as an important component of modern building electrical systems, play a crucial role in supporting and protecting cable lines, ensuring



NEC Article 392: Cable Tray Systems

It provides rules for acceptable wiring methods that can be installed in cable trays, including conditions for use. It addresses uses permitted and not permitted for



Cable Separation Standards , Winnie Industries

Data cable in metal conduit requires no separation when both systems are in separate metallic raceways. Limited energy vs. high voltage in

Contact Us

For datasheets, pricing, or custom high-speed optical interconnect solutions, please visit:
<https://www.syropy.com.pl>