

# Regarding grounding requirements for distribution boxes





## Regarding grounding requirements for distribution boxes

---

### Grounding of commercial and industrial power systems

After any major change to an electrical distribution system, every three years (maximum), or if ground-related issues are suspected, a qualified electrical



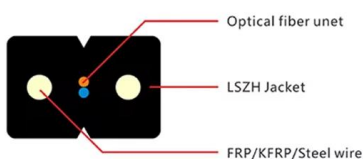
### DISTRIBUTION BOX

Each DISTRIBUTION BOX and controller must be grounded. On the US market, a 5.26 mm<sup>2</sup> (10 AWG) ground wire must be used, and in all other markets a 6 mm<sup>2</sup> must be used.



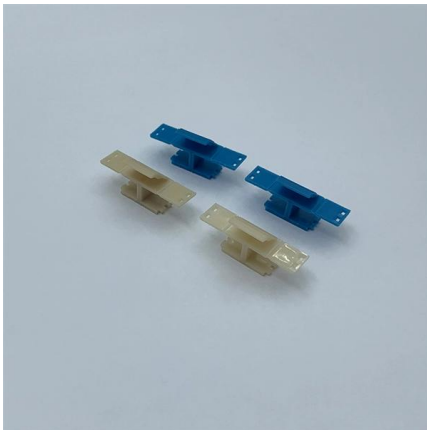
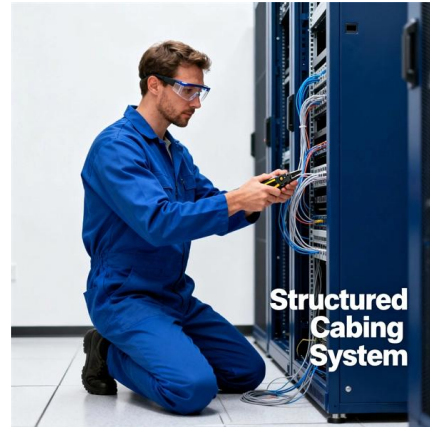
### The Complete Guide to Distribution Box: Installation, Types & More

Calculate the total electrical load and add 25% for future growth. Consider physical space requirements and accessibility needs when selecting enclosure size. What's the difference between



### GROUNDING AND BONDING FOR ELECTRICAL SYSTEMS

Connect the conductor from the panel ground bus or connector at the source to all items to which the conduits or raceways connect. Bond to a ground lug within each panel, box or equipment.



### **Nine Recommended Practices for Grounding**

Electrical Grounding Techniques Grounding and bonding are the basis upon which safety and power quality are built. The grounding system provides a

### **Detailed introduction of safety requirements for distribution box**

Safety control requirements for distribution box:  
1. The low-voltage power supply system at the construction site shall be equipped with a general distribution box, a distribution box and a



### **NEC Article 250 Grounding.**

Equipment grounding must be done in accordance with the National Electrical Code (NEC).



## Grounding Practices in Power Distribution Systems

The installation of grounding methods for transmission lines is absolutely necessary in order to guarantee the safety, dependability, and effectiveness of power



## GROUNDING OF UTILITY AND INDUSTRIAL DISTRIBUTION

In this workshop, we will demystify the concepts of grounding as applicable to utility networks and industrial plant distribution systems as well as their associated control equipment.

## Design requirements and standards for low voltage

Ensure good grounding and earthing practices to protect people and equipment from electrical faults. Regularly inspect and maintain your distribution



## The Essential Guide to Direct Grounding Boxes

Learn about the importance of direct grounding boxes in electrical systems, including benefits, installation, maintenance, and industry applications.



## DISTRIBUTION BOX

Attach a second grounding wire from the mounting plate (B), to the factory central grounding point. The ground resistance between all system parts shall be  $< 0.1 \text{ Ohm}$ . Depending



## The Direct Grounding Box: Importance and Applications

Common Applications of Direct Grounding Boxes  
Direct grounding boxes are commonly used in industrial settings, telecommunications, power distribution systems, and residential buildings.

## Grounding Requirements for Electrical Cables, Cable Trays, and

Guidelines for grounding electrical cables, busbars, and cable trays in wiring projects, ensuring safety and compliance with industry standards.



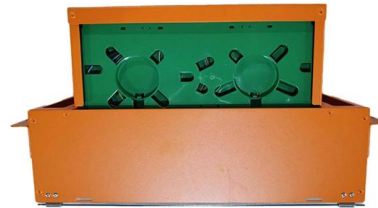
## The Ultimate Guide to Protective Grounding Boxes

Learn about the benefits, types, and importance of protective grounding boxes in ensuring electrical safety and preventing hazards.



## Stainless Steel Distribution Box Installation Manual: How To Properly

When inspecting the interior of a stainless steel outdoor electrical box distribution box, pay attention to the copper or tin-plated terminals on the base plate or side walls. These locations are usually marked



## Guidelines for data center grounding and bonding

Data centers have some very specific and unique requirements for grounding and bonding that differ significantly from the typical electrical distribution system in other types of facilities. These



## 9 Recommended Practices for Grounding

Use equipment grounding conductors sized equal to the phase conductors to decrease circuit impedance and improve the clearing time of

Fast shipment in stock Default white and black, contact customer service for notes

4U standard model



## Protective grounding requirements for transmission and distribution

Introduction to protective grounding This technical article covers protective grounding requirements for steel tower and wood



**Microsoft Word**

This Grounding Standard describes the technical requirements for grounding the SEC Distribution Network installations. SEC Distribution System extends from the MV (33 kV, 13.8 kV) feeder outlets



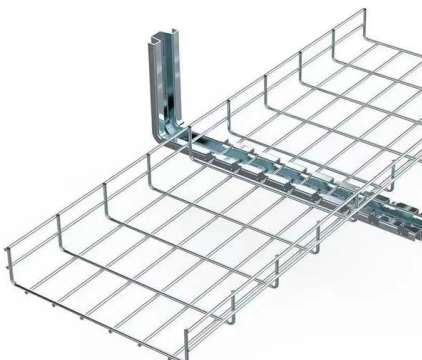
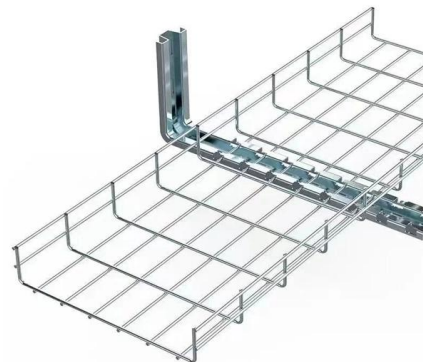
**Safety requirements of distribution box**

The distribution box has the characteristics of small size, simple installation, special technical performance, fixed location, unique configuration function, not limited by



**2023 NEC Study Guide For "Service Grounding Basics"**

Within the numerous NEC rules regarding service grounding, I believe there are three basic concepts that stand out. These concepts apply to all service installations. This study guide will address the



**Microsoft Word**

1.5.2 Grounding Methods: Details of typical grounding arrangement for different types of distribution system installations are covered in respective clauses. Unless indicated, otherwise on relevant



## Distribution System Grounding , part of Electric Power and Energy

Good system grounding provides the path for normal load and fault currents while maintaining load and controls temporary overvoltages. Good equipment grounding ensures personnel safety.



### Grounding System Installation Standards for Distribution Boxes and

Whether you're a seasoned pro or just starting out, this comprehensive guide will give you practical insights into proper grounding techniques, with a special focus on how selecting quality materials

#### 1926.962

General. For any employee to work transmission and distribution lines or equipment as deenergized, the employer shall ensure that the lines or equipment are deenergized under the provisions of §



### Cautions and Requirements for Installation of

Distribution box is a low-voltage distribution device which assembles switchgear, measuring instruments, protective appliances and auxiliary equipment in a closed



## Contact Us

---

For datasheets, pricing, or custom high-speed optical interconnect solutions, please visit:

<https://www.syropy.com.pl>