

Reference Price of 670nm Laser Diode in West Africa





Reference Price of 670nm Laser Diode in West Africa

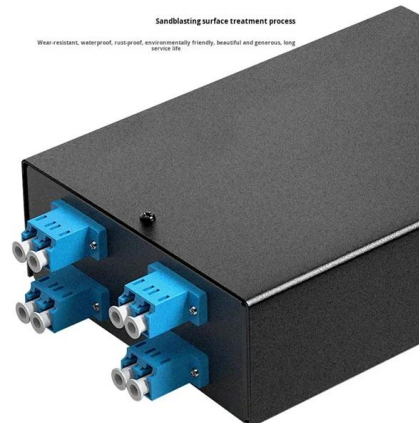


price list

SPL670-50-PM, 670 \pm 10 nm, 50 mW, PM fiber, 4 μ m, N.A. 0.12, FC/PC con. LD PIGTAILED ,
INFRARED , 785 - 940 nm. LD PIGTAILED ,
INFRARED , 980 - 1390 nm. LD PIGTAILED ,

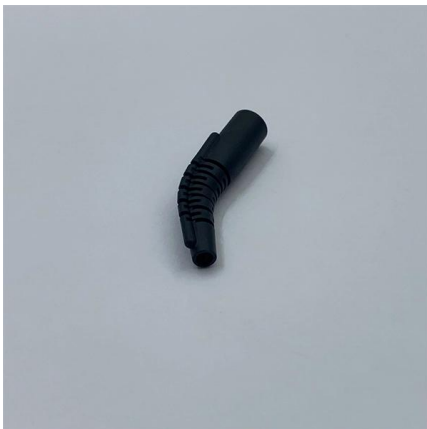
Laser Diodes - Mouser South Africa

Mouser offers inventory, pricing, & datasheets for Laser Diodes.



FWSL-670-1W-TO3-MM

Continuous-wave (CW) laser diodes are highly efficient and can be manufactured to emit light at various wavelengths, making them versatile for different applications. Laser Type: Laser-Diode Laser diodes



Laser diode 670nm

The 670nm laser diode is a high-performance semiconductor device widely used in applications such as optical alignment, barcode scanning, laser pointers, biomedical instrumentation, and scientific research.



Laser diode 670nm

Explore high-quality laser diodes at Alibaba , including 670nm red laser diodes for medical, aesthetic, and optical applications. Discover reliable options with long service life, various power



US-Lasers: 670nm-5mW-60C Samsung Visible Laser Diode

US-Lasers: 670nm-5mW-60C Samsung Visible Laser Diode Specifications RED LASER DIODE DATA SHEETS ABSOLUTE MAXIMUM RATINGS (Tc=25 °C)



High Power 670nm 300mW FP Laser Diode in TO3 Package

High Power 670nm 300mW FP Laser Diode in TO3 Package LD670D300F13 Data Sheet Features 670nm Fabry-Perot cavity semiconductor laser Optical output power: 300mW CW High output power





670nm, 5mW Laser Diode

The laser diode has a threshold current of 40-60 mA and an operating current of 50-70 mA (at $P_o=5mW$). It operates at an operating voltage of 2.3-2.6 V (at

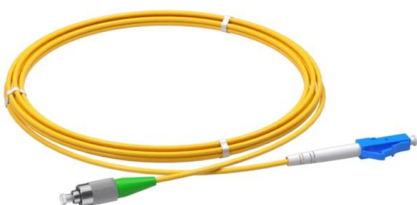


670nm Laser Diode, High Power (11 WATTS)

These fiber-coupled modules offer R& D lab researchers and system integrators a state-of-the-art high power semiconductor laser at 670 nm. Key features of these

Laser Diodes, Modules , Optoelectronics , DigiKey

Shop DigiKey's large in-stock selection of Laser Diodes, Modules. View inventory, pricing and order now for same day shipping!



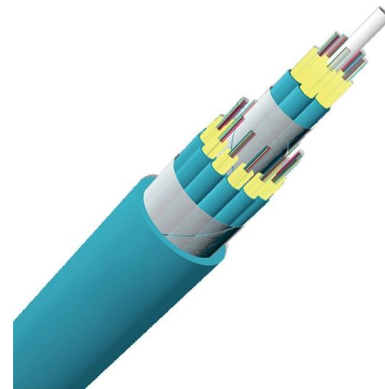
Red laser Ushio laser diode HL67192MG 670nm 15mW (CW) /30mW (Pulse)

The laser light is harmful to human body especially to eye no matter what directly or indirectly. The laser beam shall be observed or adjusted through infrared camera or equivalent. This product (without



670nm, 10mW Output Red Laser Diode USHIO

Product Overview 670nm, 10mW Red Laser Diode This single-mode red 670nm USHIO HL6748MG laser diode drives up to 10mW CW output power. The laser operates over a wide range of operating



General Use of 670nm Red Laser Diode Module - Berlinlasers Laser

Featured advantages: 670nm red laser diode module keeps work with high energy density red laser beam emission, which outputs high energy red laser beam, can be focused into a

LD670E300G13: 670nm 300mW C-Mount Laser Diode Data Sheet

The Lasermate LD670E300G13 is a high power 670nm, 300mW Fabry-Perot laser diode in C-mount package. The laser diode is suitable as laser light source for many applications, including bar code



3.0mW 670nm, LDM Focusable Laser Diode

Compact LDM Focusable Laser Diode Modules are self-contained and compact and offer a variety of features. They are an ideal replacement for a helium-neon laser in many applications and offer the



670nm 10mW 70°C Laser Diode in TO-18 5.6mm Package

Part No. LD670A10C17 FEATURES 670nm 10mW CW Index-guided InGaAlP Diode Package: TO-18 (dia. 5.6mm) Built-in photodiode for monitoring laser diode



Laser Diodes , RS

Shop our range of Laser Diodes, colours include red, blue, and green laser diodes. Browse our IR, VCSEL and continuous wave laser diodes.

3mW 670nm, Laboratory Laser Diode

Laboratory Laser Diode Modules ideal for pilot beam for alignment, measurement, robotic control and positioning are available at Edmund Optics.



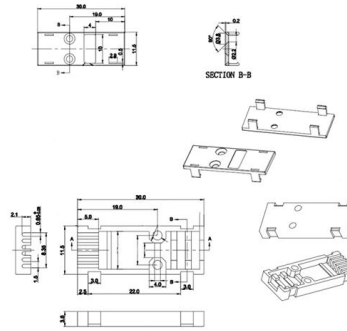
670nm 300mW FP Laser Diode in TO3 Package

670nm 300mW FP Laser Diode in TO3 Package
Part No. LD670D300F13 FEATURES 670nm 300mW Fabry-Perot cavity semiconductor laser High output power



Low Cost Low Price TO18 5.6mm Red 670nm 5MW Laser Diode

Low Cost Low Price TO18 5.6mm Red 670nm 5MW Laser Diode No reviews yet Dongguan Blueuniverse Laser Co., Ltd. Custom Manufacturer



670nm Laser Diodes - Shop Laser Diodes from Top Brands

RLS/670NM-5MW-SMF Manufacturer
Wavespectrum \$675.00 View Wavelength 670 nm Output Power 0.005 W Package Type Coaxial Mode Structure Single Mode ** This Product is Currently

670nm, 10mW Single Mode Red Laser Diode, USHIO

This USHIO HL6714G single mode 670nm laser diode delivers up to 10mW output power (CW mode). The semiconductor laser is commonly used in sensing, laser



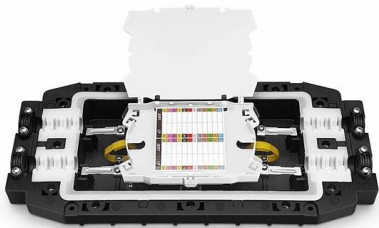
Laser Diode, Surface Mount & Through Hole, RS

Laser Diodes Laser diodes are semiconductor devices which closely resemble an LED (light emitting diode). Laser diodes work in a very similar way to LEDs, however they create a laser beam at its



Ushio laser diodes & LEDs, OSRAM laser diodes, Panasonic lens, laser

Hier sollte eine Beschreibung angezeigt werden, diese Seite lässt dies jedoch nicht zu.



Ushio Starts 670nm to 690nm Band Single-mode

Ushio Inc. (Head Office: Tokyo, President & CEO: Koji Naito, hereinafter referred to as "Ushio") is proud to announce the sample release of

670nm Super luminescent Diode (SLD) Laser Diode

The PL-SLD- W670-B-A81-PA 670nm Superluminescent Diodes bridge the gap between Laser Diodes and Light Emitting Diodes. Like an LD, the SLD provides a



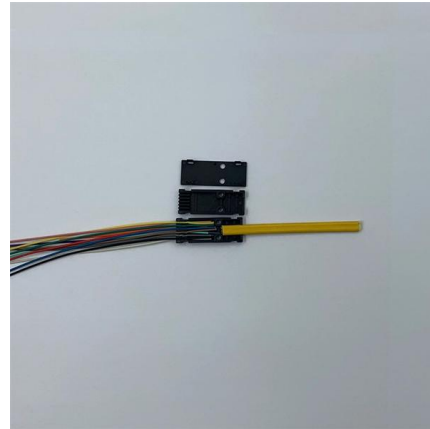
670nm high power laser diode with C-mount/TO3/E-mount package

Wavespectrum offer the 670nm/660nm high power red laser diode, 1W/1.5W output power, C-mount, TO3, E-mount package, FAC optional, 670nm red LD, high stability, long lifetime.

Laser Diodes, Laser Modules



Shop DigiKey's large in-stock selection of Laser Diodes, Laser Modules - Laser Delivery, Laser Fibers. View inventory, pricing and order now for same day shipping!



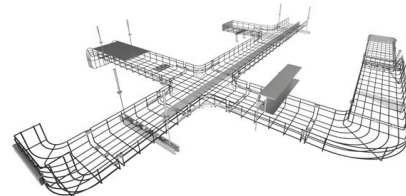
FWSL-670-1W-TO3-MM

Visible wavelengths in lasers refer to the range of electromagnetic waves that can be detected by the human eye, typically spanning from about 400 to 700 nanometers (nm). When a laser operates in



Pricing Guide for Buying Laser Diodes

Wavelengths for consumer electronics include red laser diodes in the 630nm to 670nm range that are used in optical mice, levelers or for laser pointers. Another



Contact Us

For datasheets, pricing, or custom high-speed optical interconnect solutions, please visit:
<https://www.syropy.com.pl>