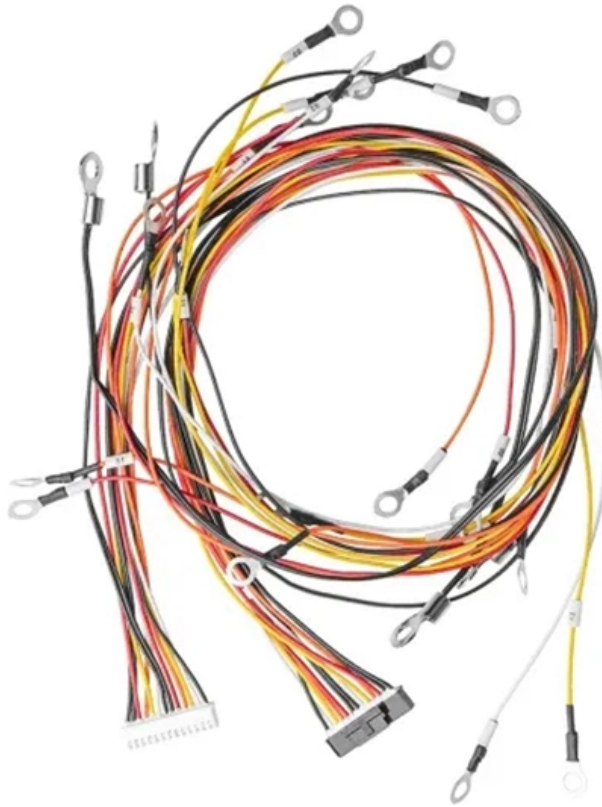


Rainproof rating standard for distribution boxes





Overview

IP65 rated enclosures provide indoor and outdoor protection for waterproof applications. Tested to IP65 standards ensures enclosures and cases are safe for housing sensitive electronic assemblies in harsh environments. The UL Rain Test, an internationally recognized validation method, simulates real-world rainfall to identify design flaws, improve sealing mechanisms, and verify compliance with IP ratings (e. The truth is, picking the right protection level for distribution boxes isn't just about compliance paperwork—it's about real-world reliability when it matters most. It matters in every industry—from solar energy systems and telecom base stations to LED lighting, food processing plants, and marine control. SMICO's IP65 protection rating is one of the common protection rating standards for outdoor plastic distribution boxes.



Rainproof rating standard for distribution boxes



Waterproof Distribution Box , IP65 Plastic DIN Rail

Each enclosure delivers dependable IP65-IP68 sealing for outdoor and industrial use, with options for plastic waterproof distribution box housings and DIN rail

Analysis of the protection level test standard for distribution boxes

Distribution boxes protect our electrical systems like bodyguards shield VIPs. When they fail, everything goes dark. Today, we'll explore how international standards translate into practical



Analysis of NEMA ratings for distribution boxes: Choose the protection

Originally developed in the US by the National Electrical Manufacturers Association, these ratings have become the industry's common language for protection levels. But here's what most manuals won't



NEMA Enclosure Types

NEMA Enclosure Types The purpose of this document is to provide general information on the definitions of NEMA Enclosure Types to architects, engineers, installers, inspectors and other



Analysis of the protection level test standard for distribution boxes

Distribution boxes protect our electrical systems like bodyguards shield VIPs. When they fail, everything goes dark. Today, we'll explore how international standards translate into practical

What is the IP Rating for a weatherproof enclosure?

Learn what IP ratings mean for weatherproof enclosures and how to choose the right one to protect your equipment from dust and water.



TECHNICAL SPECIFICATION FOR LT DISTRIBUTION BOX

KV 1. DESCRIPTION OF MATERIALS:- The L.T. Distribution Cabinets shall be installed on D.P. Structure for Plinth Mounted 33/.4 KV Substation of the ratings indicated above. These Distribution



Understanding NEMA 3R Weather-Resistant Enclosures

Understanding the NEMA 3R Weather-Resistant Standard for Enclosures NEMA ratings, developed by the National Electrical Manufacturers Association (NEMA),

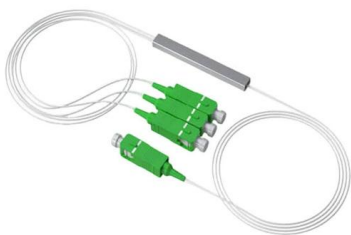


Low voltage distribution box: weatherability standard and protection

Low voltage distribution box outdoor use requires IP65 or NEMA 4X ratings, corrosion-resistant materials, and proper sealing for lasting weather protection.

NEMA Rating Guide for Electronic Enclosures

NEMA 7, 8, 9 and 10 are the ratings to look at for hazardous environments in which explosive gases may be present. You may read more about these ratings at this blog post, " Rating NEMA Boxes



A comprehensive understanding of distribution box

At Timelec, we provide customized, high-quality distribution boxes that meet international safety standards, with a strong focus on durability,



Weatherproof Outdoor Distribution Boxes: Key Design Insights

Weatherproof outdoor distribution boxes ensure reliable power distribution in challenging environments by protecting against moisture, dust, and temperature extremes. Key design points include high



What is a waterproof outdoor distribution box

A waterproof outdoor distribution box shields electrical connections from water, dust, and weather, ensuring safe and reliable outdoor power distribution.

IP Ratings Explained , Complete Waterproof

Complete IP ratings guide: from IP20 to IP69K, with charts, IP65 vs IP67 vs IP68, NEMA equivalents, and industry applications.



Type 3R Rainproof Boxes : Austin Electrical Enclosures

Type 3R Rainproof Boxes Description Austin rainproof boxes are Underwriters Laboratories Listed for Wiring or Junction box applications. All rainproof boxes are designed for outdoor use primarily to



Waterproof Distribution Box , IP65 & IP66 Rated

ZCEBOX manufactures IP65 & IP66 waterproof distribution boxes for outdoor and industrial applications. Built with durable materials, CE & ROHS certified. Contact

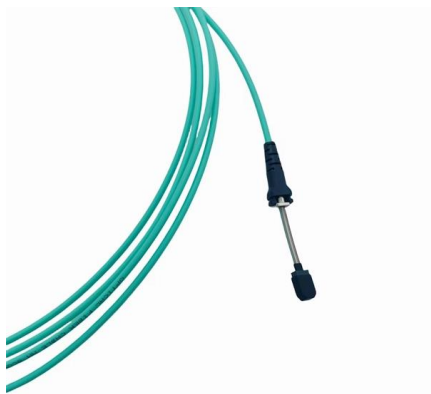


IP Ratings Explained: How to Choose the Right

This guide breaks down IP ratings in plain language and explains how to pick the right weatherproof junction box. We'll also look at related products

Key Material Requirements for Distribution Box

The key material requirements for distribution box are used in constructing an electrical distribution box play a crucial role in its durability,



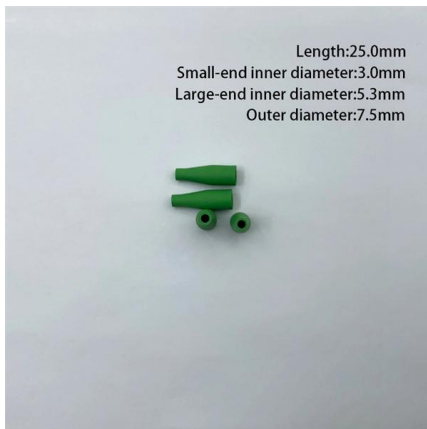
IP & NEMA Enclosure Ratings Explained - Choosing

Introduction When selecting an electrical enclosure, the protection rating is one of the first things engineers, installers, and buyers need to evaluate.



Key Steps When Choosing the Right Waterproof Level

Learn how to choose the right waterproof level for distribution boxes. Follow 8 key steps and explore IP65+ solutions from trusted manufacturer



NEMA Ratings for Enclosures

Designed for outdoor use, offering protection against rain and sleet. Commonly used for housing power distribution, lighting contactors, switchgear, and other electrical

Design requirements and standards for low voltage

Regularly inspect and maintain your distribution box to catch issues early and ensure safe operation. Design requirements for low voltage distribution



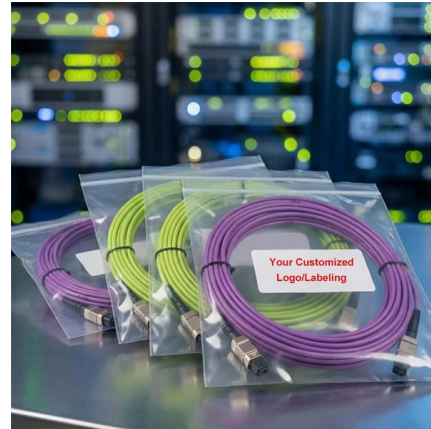
IP65 Distribution Box

SMICO's IP65 protection rating is one of the common protection rating standards for outdoor plastic distribution boxes. IP represents the international protection level



IP Ratings Explained , Ingress Protection Rating

The second digit of the IP rating indicates the level of the enclosure's protection from blocking internal components against various forms of moisture (sprays, drips or



GDB Waterproof Circuit Breaker Distribution Box

Series:GDB Material:Polycarbonate IP Rating:IP65
NEMA Rating:4X Color:Light Grey
Application:Outdoor

General Installation Requirements, Part XXX

Section 110.28 also applies to enclosures of switchboards, switchgear, panelboards, industrial control panels, motor control centers, meter sockets, enclosed



What is the definition of a NEMA 3R enclosure and how are they

NEMA enclosures manufacture NEMA 3R enclosures for housing power distribution, lighting contractors, switchgear, and other electrical components that need to be protected in an



UL Rain Test Standards & Equipment Guide

The UL Rain Test, an internationally recognized validation method, simulates real-world rainfall to identify design flaws, improve sealing mechanisms,



Contact Us

For datasheets, pricing, or custom high-speed optical interconnect solutions, please visit:

<https://www.syropy.com.pl>