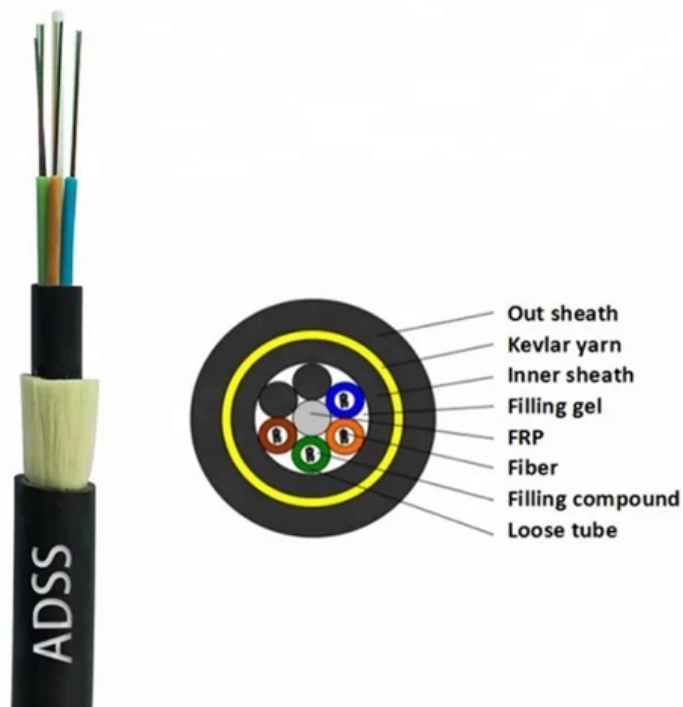


Rain protection for cable trays entering the factory building





Overview

The best method for weatherproofing cable trays will depend on whether the cables are entering the building through a vertical wall penetration or a roof penetration. Other factors such as how the building is constructed, exposure, and how many cables there are. WSP weatherstops are designed to seal penetrations of any type in walls or floors by cable tray, cable conduit, pipe and/or bus duct. Cable tray installation must comply with specific technical standards to ensure electrical safety, system reliability, and long-term maintainability. maintain spacing or to keep cables in place when the tray is ect the minimum bend ra-dius for cables as they exit the bottom of the cable tray.



Rain protection for cable trays entering the factory building

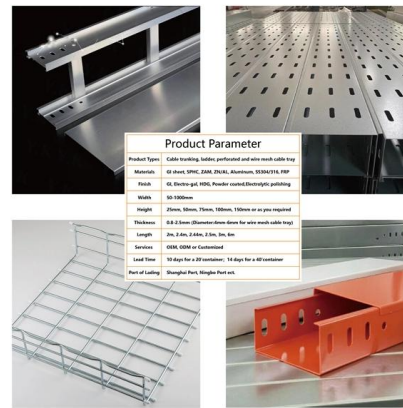


Types of Cable Typically Used in Cable Tray

Types of Cable Typically Used in Cable Tray The purpose of a cable tray system is to support, route, and protect cable as part of the cable management system.

Cable Tray Systems: Requirements and Best Practices

Comprehensive guide to cable tray systems requirements: tray types, materials, loading, supports, bonding, routing, and best practices for safe electrical cable management.



Product Parameter	
Product Type:	Cable tray, ladder, perforated and wire mesh Ladder Tray
Material:	60 series, 304L, 316L, 304, 316, 304L, 316L, 304, 316, 304L, 316L
Finish:	02, Electro-pd, 020L, Powder coated, Electrolytic, polishing
Width:	50, 100mm
Height:	20mm, 30mm, 40mm, 50mm, 60mm, 70mm, 80mm, 90mm, 100mm, 110mm, 120mm, 130mm, 140mm, 150mm, 160mm, 170mm, 180mm, 190mm, 200mm, 210mm, 220mm, 230mm, 240mm, 250mm, 260mm, 270mm, 280mm, 290mm, 300mm, 310mm, 320mm, 330mm, 340mm, 350mm, 360mm, 370mm, 380mm, 390mm, 400mm, 410mm, 420mm, 430mm, 440mm, 450mm, 460mm, 470mm, 480mm, 490mm, 500mm, 510mm, 520mm, 530mm, 540mm, 550mm, 560mm, 570mm, 580mm, 590mm, 600mm, 610mm, 620mm, 630mm, 640mm, 650mm, 660mm, 670mm, 680mm, 690mm, 700mm, 710mm, 720mm, 730mm, 740mm, 750mm, 760mm, 770mm, 780mm, 790mm, 800mm, 810mm, 820mm, 830mm, 840mm, 850mm, 860mm, 870mm, 880mm, 890mm, 900mm, 910mm, 920mm, 930mm, 940mm, 950mm, 960mm, 970mm, 980mm, 990mm, 1000mm
Thickness:	0.8, 1.0, 1.2, 1.5, 2.0, 2.5, 3.0, 3.5, 4.0, 4.5, 5.0, 5.5, 6.0, 6.5, 7.0, 7.5, 8.0, 8.5, 9.0, 9.5, 10.0, 10.5, 11.0, 11.5, 12.0, 12.5, 13.0, 13.5, 14.0, 14.5, 15.0, 15.5, 16.0, 16.5, 17.0, 17.5, 18.0, 18.5, 19.0, 19.5, 20.0, 20.5, 21.0, 21.5, 22.0, 22.5, 23.0, 23.5, 24.0, 24.5, 25.0, 25.5, 26.0, 26.5, 27.0, 27.5, 28.0, 28.5, 29.0, 29.5, 30.0, 30.5, 31.0, 31.5, 32.0, 32.5, 33.0, 33.5, 34.0, 34.5, 35.0, 35.5, 36.0, 36.5, 37.0, 37.5, 38.0, 38.5, 39.0, 39.5, 40.0, 40.5, 41.0, 41.5, 42.0, 42.5, 43.0, 43.5, 44.0, 44.5, 45.0, 45.5, 46.0, 46.5, 47.0, 47.5, 48.0, 48.5, 49.0, 49.5, 50.0, 50.5, 51.0, 51.5, 52.0, 52.5, 53.0, 53.5, 54.0, 54.5, 55.0, 55.5, 56.0, 56.5, 57.0, 57.5, 58.0, 58.5, 59.0, 59.5, 60.0, 60.5, 61.0, 61.5, 62.0, 62.5, 63.0, 63.5, 64.0, 64.5, 65.0, 65.5, 66.0, 66.5, 67.0, 67.5, 68.0, 68.5, 69.0, 69.5, 70.0, 70.5, 71.0, 71.5, 72.0, 72.5, 73.0, 73.5, 74.0, 74.5, 75.0, 75.5, 76.0, 76.5, 77.0, 77.5, 78.0, 78.5, 79.0, 79.5, 80.0, 80.5, 81.0, 81.5, 82.0, 82.5, 83.0, 83.5, 84.0, 84.5, 85.0, 85.5, 86.0, 86.5, 87.0, 87.5, 88.0, 88.5, 89.0, 89.5, 90.0, 90.5, 91.0, 91.5, 92.0, 92.5, 93.0, 93.5, 94.0, 94.5, 95.0, 95.5, 96.0, 96.5, 97.0, 97.5, 98.0, 98.5, 99.0, 99.5, 100.0
Length:	2m, 2.4m, 2.8m, 3.2m, 3.6m, 4m
Services:	ODM, OEM or Customized
Lead Time:	10 days for a 20' container / 15 days for a 40' container
Port of Loading:	Shanghai Port, Ningbo Port, etc.

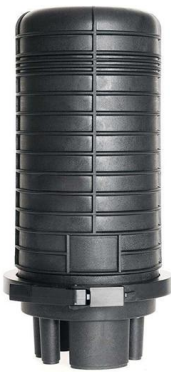
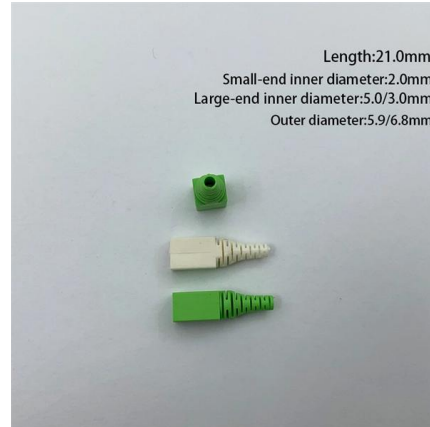


Fireproof Cable Trays Acceptance: Standards for Safety

Understanding Fireproof Cable Trays Fireproof cable trays are specialized structures designed to support and protect cables. They resist

GUIDE CABLE TRAYS TECHNICAL

The cable management system's electromagnetic performance characterises its ability to protect its cables from external electromagnetic disturbance; if this is controlled, the data carried by the cables



What is a cable tray?

Cable trays are often used on external walls and roofs, before cables enter the building through a roof penetration or vertical wall penetration - and

Cable Tray Technical Guide A practical guide to product selection and

In designing supports for a cable tray system, consideration should be given to the loads associated with future cable additions and any additional loading that may be applied to the cable tray system (e.g.,



Optimising Industrial Plant Cable Tray Systems: A

Are you wondering how to make your Industrial Plant Cable Tray Systems work better, safer, and last longer? Many plant managers and engineers





Effective Measures for Protecting Cable Trays in

This article will provide detailed insights into how to enhance the durability and safety of cable trays in outdoor environments through effective



Explosion Proof Cable Trays in Chemical Plants

Essential guide to explosion proof Cable Trays in Chemical Plants. Learn about tray zoning, materials, design, installation, & safety for hazardous

Electrical Safety First: How Cable Trays Protect Your

Ensure maximum electrical safety with cable trays! Learn how they prevent wire damage, improve organization, and enhance equipment



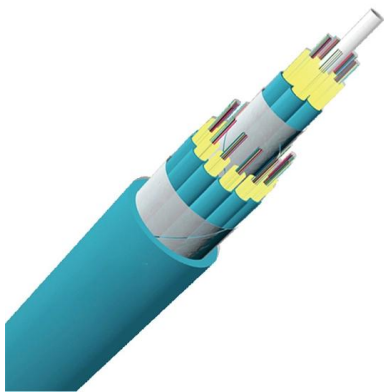
Effective Measures for Cable Tray Drainage

Discover effective measures for cable tray drainage to enhance the safety and stability of electrical systems. Learn the best practices for improving



BKRS walkable cable tray system

By closing the gap between two adjacent covers, they protect the inside of the cable trays reliably from foreign objects, such as dust and dirt. With variable settings, the protective elements are suitable for



Understanding Cable Tray Safety Hazards: A Detailed

Learn about common cable tray safety hazards and how to prevent risks such as cable damage, electrical short circuits, moisture intrusion, and more.

Water Intrusion in Cables: How to Keep Connections

Learn how outdoor cable designs prevent water intrusion, protecting connections from weather with gel-filled cores, durable jackets, and drip loops.



WAC 296-24-95707

(i) You must effectively bond metal raceways, cable trays, cable armor, cable sheath, enclosures, frames, fittings, and other metal noncurrent-carrying parts that are to serve as grounding conductors,



Outdoor Cable Tray Raceway - Weather-Resistant

Designed to withstand weather, UV rays, moisture, and temperature fluctuations, these solutions ensure long-lasting performance for power, control, and data



Cable tray

In the electrical wiring of buildings, a cable tray system is used to support insulated electrical cables used for power distribution, control, and communication. Cable

Cable Tray SHIB NAL

Cable trays are not raceways, but they are treated as a structural component of a facility's electrical system. Cable trays are a part of a planned cable management system to support, route, protect and



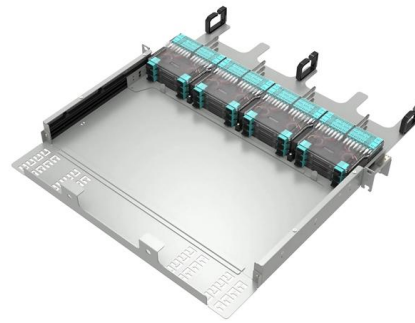
Moisture Problems in Electrical Systems , Cable Tray Institute

Use a drip loop in the cable with the bottom of the drip loop below the enclosure entry point. This will allow any rain water to have a position where it will drip off the cable.



Cable Tray Cladding and Reels Management Sections

Weatherproof cable tray cladding is engineered to withstand harsh outdoor environments through UV-resistant plastics, rubberized barriers, or



CSD Sealing Systems: Weatherstops

Multi-Cable and Cable-Tray Weatherstop Penetrations
10 Reasons to Count on WSP For Your Weatherseal Needs
Typical WSP Weatherstop Unit Construction
MSDS Sheets
WSP weatherstops are designed to seal penetrations of any type in walls or floors by cable tray, cable conduit, pipe and/or bus duct. The WSP system utilizes a powder coated or galvanized steel frame that encompasses the entire tray or duct at the point of penetration. These steel frames are chemical, water and corrosion resistant and are suiSee more on dorn

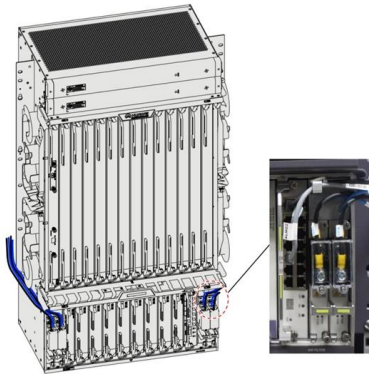
Technical Guidelines for Cable Tray Installation and

Cable tray installation must comply with specific technical standards to ensure electrical safety, system reliability, and long-term maintainability. This document

Cable Tray Technical Guide A practical guide to product selection and

SOLID-BOTTOM CABLE TRAY Providing additional cable protection, solid-bottom cable tray is sometimes preferred to support and protect numerous small instrumentation and control cables.



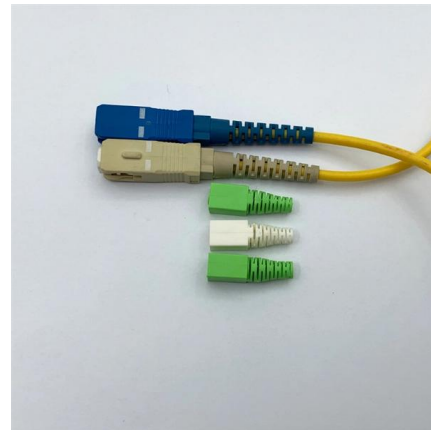


Interflex USA

In construction projects, Interflex's cable trays and conduits serve as fundamental components. Our wire-mesh cable trays are ideal for managing and protecting electrical and communication cables

Types of Cable Trays: Benefits and Uses

Types of Cable Trays: Benefits and Uses Cable trays are a durable and organized solution for supporting and protecting cable networks in various



What Are Cable Trays and How Do They Work?

The open nature of many cable tray designs also promotes better air circulation around the cables. Principal Types and Designs Cable trays come in several configurations that balance cable

Contact Us

For datasheets, pricing, or custom high-speed optical interconnect solutions, please visit:
<https://www.syropy.com.pl>