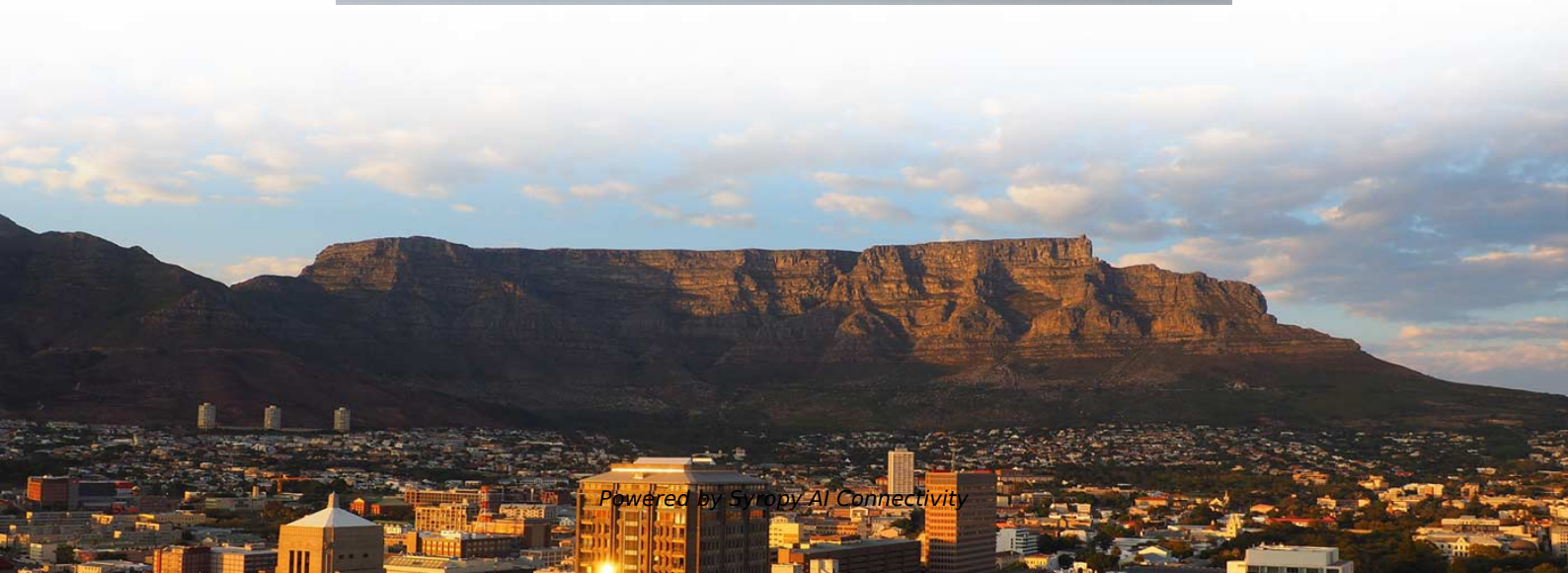


# **Rack-mounted fiber optic patch panel 1u**





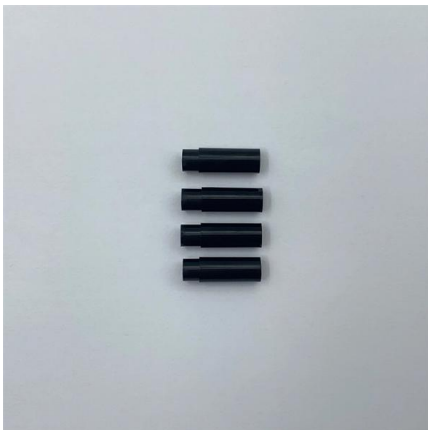
## Rack-mounted fiber optic patch panel 1u

---



### 12 Port Rack Mount Fiber Patch Panel With 2 Separate

This 1U fiber patch panel offers excellent fiber termination and patching management, making it ideal for optical cable distribution and terminal



### Rack Mounted Fiber Optic Patch Panel

The fiber optic patch panel is designed to be mounted in a standardized 19 inch equipment rack, typically occupying 1U, 2U, 3U or more spaces depending on the

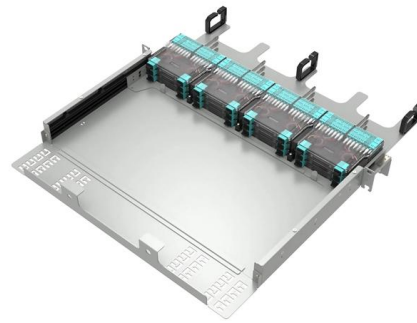
### Amazon : Lc Fiber Patch Panel

LC-OM3 12 Duplex 24 Port Fiber Enclosure Box - 1 RU Rack Mount Multimode LC-UPC Kit for 19" Racks - Includes Splice Trays, OM3 Pigtails Fiber Optic Cables, and LGX Loaded Patch Panel



### Amazon : Fiber Patch Panel

Explore fiber patch panels for network infrastructure. Find LC, SC, and ST connector options for your telecommunications or data center needs.



### Rack Mount Fiber Optic Patch Panel And Termination

OTRANS: Professional manufacturer of rack mount fiber patch panels & termination boxes. ISO9001 certified, CE/UL listed. High-density 1U-4U panels for data



### What is Patch Panel and Types

Fiber optic patch panels can be divided into rack mounted and wall mounted types. The height of rack mount ODF is usually from 1U to 4U, used for



### Optical Distribution Frame (ODF) in Telecom: Types & Uses

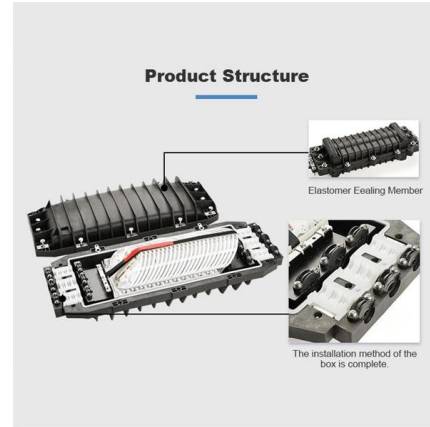
Discover what ODF is in telecom--types (rack-mount, wall-mount), features, and how it differs from patch panels. Essential for fiber management and network scalability.





### 19? 1RU Fiber Optic Patch Panel , Rack Mount Fiber

Introducing our high-quality 19? 1RU Fiber Optic Patch Panel, specifically designed for efficient and reliable fiber optic connectivity in rack-mount applications. This

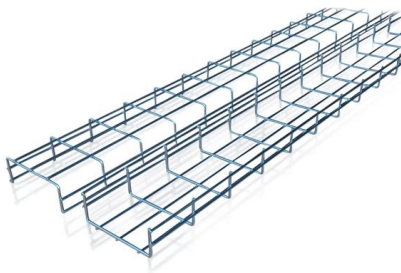


### 1U/2U/3U/4U Rack Mount Fiber Optic Patch Panel Manufacturer

Constructed from cold-rolled steel or aluminum alloy with electrostatic powder coating, this Rack Mount Fiber Optic Patch Panel ensures superior durability, corrosion resistance, and long-term reliability in

### Xpress Fiber Management® (XFM®) 1U Patch Panel

PRODUCT DESCRIPTION The Xpress Fiber Management® (XFM®) 1U patch panel is a rack mountable interconnect point specifically designed to manage dense



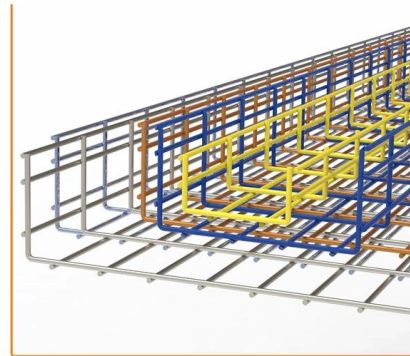
### Rack-Mount Patch Panel

Rack-Mount Patch Panel Maximize network performance and keep up with network changes with a Rack-Mount Patch Panel from Belden, designed for networks and



## What Is Fiber optic Patch Panel?-30 seconds Quick and accurate guide

A fiber optic patch panel--sometimes called a fiber distribution panel--is a rack-mounted unit designed to neatly terminate, organize, and manage fiber-optic cables. Serving as the network's centralized



### 1U Rack Mounted MPO Fiber Optic Patch Panel

Professional 1U rack mounted MPO fiber optic patch panel with 12 cassette capacity and 1.2mm cold rolled steel construction. Supports SM, MM, OM3, OM4 fiber types with LC and SC adapter options.

### Rackmount Fiber Patch Panels

Our Preloaded Patch Panels are a very affordable option for organizing fiber optic networks. Available in Single and Multi-mode options, these loaded Fiber Distribution boxes come in 12, 24, 36, 48, 72 96



### Fiber Optic Patch Panel 1U,Rackmount,12 Port Loaded

Description Rack mounted patch panel is designed for fiber connection and distribution of backbone fiber cable; it is suitable for fiber splicing, storage and





### 1U 24 Port Fiber Optic Patch Panel Loaded with SC Simplex Adapter

1U 24 Port Fiber Optic Patch Panel Loaded with SC Simplex Adapter and Pigtail Drawer Type Rack Mount Enclosure for Cabinet Use



### FiberLink 1RU Rack Mount Fiber Patch Panel

Occupying just 1RU of rack space, It holds up to 3 LGX compatible fiber adapter plates and 3 fiber splice trays for a complete patching/splicing solution. It is ideal for use in a wide variety of environments

### 1U Fiber Patch Panel

Rayoptic manufactures this 1U sliding patch panel with 4 x 16-fiber MTP/MPO to LC cassette modules, providing a total capacity of 64 fibers in only 1U rack space. The modular cassette design, sliding tray



### Fiber Optic Distribution Frame (ODF) , Rack & Wall Mount

Fiber optic distribution frame (ODF), also known as fiber patch panel or optical distribution frame, is a rack-mount or wall-mount enclosure that provides organized termination, splicing, and patching of



## Rack-Mount Panel

Belden offers several Fiber Patch Panel families to suit various levels of fiber density support. The DCX Rack-Mount Housings are available in three configurations 48



## Fiber Patch Panel

A 1U 64-fiber MTP/MPO to LC sliding patch panel is an efficient solution for modern high-density fiber networks. It helps convert MTP/MPO backbone cabling into LC duplex patching, while keeping the

## 8 Port Wall Mount Fiber Optic Patch Panel

Description The 8 Port Fiber Patch Panel is a compact wall mount enclosure designed for indoor fiber optic distribution. It supports up to 8 adapter ports,



## GETEKnet Custom Wall Mounted Fiber Optic Cable Lc 3u 72c 12-port

GETEKnet Custom Wall Mounted Fiber Optic Cable Lc 3u 72c 12-port sc Om4 Multimode Patch Cord Patch Panel Termination Box Odf



### 1U 12 Port LC Duplex Rackmount Panel 1U Rackmount Fiber Optic Patch

Product Details About This Product Organizing your fiber network? This 1U rackmount patch panel is a clean solution. It's loaded with 12 LC duplex ports, perfect for multimode fiber connections. Fits



### Verified Supplier Fiber Optic Distribution Panel ftth Compatible

1U 48 Port Fiber Optic Patch Panel SC Duplex LC Rack Mount Optical Distribution ODF Optical Fiber Patch Panel 5-day dispatch US \$6.00-\$7.10 MOQ: 2 pieces

### Rack Mount Patch Panels including LS, XFM and Denali products.

Discover AFL's rack mount fiber patch panels--featuring Denali High-Density, LS Series, UltraSlim, U Series, and Xpress Fiber Management® (XFM®) options. Engineered for modularity, scalability, and



### MPO Cassette Patch Panel 2026 Buying Guide

MPO Cassette Patch Panel Architecture in 2026: Design, Density, and Deployment Guide As enterprise and hyperscale data centers scale to support 800G and 1.6T switching fabrics in 2026,



## Fiber Optic Patch Panels , Fibertronics, Inc.

A complete line of fiber optic patch panels. 12 fiber 24 core, 48, 72 & 144 fiber configurations. Standard 1U, 2U, 3U and 4U and optical distribution frames.



## Contact Us

---

For datasheets, pricing, or custom high-speed optical interconnect solutions, please visit:

<https://www.syropy.com.pl>