

Rack-mounted AI application server





Rack-mounted AI application server



AI-Racks

Customize your AI server rack to meet your unique needs. Don't settle for a one-size-fits-all solution for your AI workloads. With GAW's fully customizable AI server racks, you can tailor your setup to meet

NVIDIA GPU Servers for AI, Inference, Training, HPC

Pre-installed with AI/ML software stack (PyTorch, TensorFlow, CUDA). Powered by the latest NVIDIA Blackwell architecture, AMD EPYC or Intel Xeons processors,



eRacks/AILSA

eRacks/AILSA -- 2U rackmount AI server (3U & 4U available) with up to 512 GB RAM and 3 COTS GPUs. Runs Ollama, LLaMA, DeepSeek, and Stable Diffusion

AI Server Racks: AI Infrastructure Server Solutions

Amy is a passionate tech writer at OneChassis Technology, a leading rackmount chassis manufacturer. With years of experience in IT infrastructure,



ai rugged rackmount server aerospace defense , Military

The AI rugged rackmount server line brings high performance computing capabilities to aerospace, defense and other mission-critical applications at the edge.



From Servers to Racks: The Rise of Rack-Scale

Welcome to the era of Rack-Scale Computing. What Is Rack-Scale Computing? Instead of treating servers as the core unit, rack-scale computing



AI Rackmount Servers

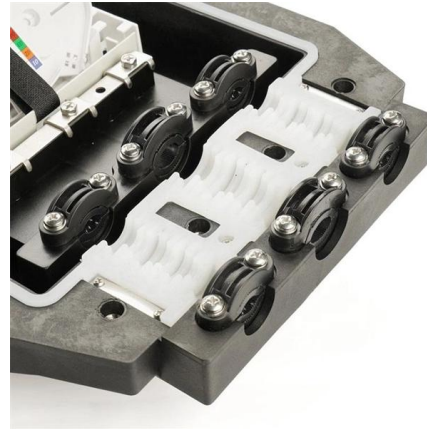
Tired of AI servers that cost more than your car and come preloaded with GPUs you can't upgrade, don't need, or can't even buy? Meet the RAMstack, a new kind of rackmount AI server--designed for





AI Rackmount Servers

Meet the RAMstack, a new kind of rackmount AI server--designed for developers, researchers, and AI engineers who value real memory, practical performance, and open-source flexibility over hype.



AI Compute Rack Definition , AI Server Racks , AI Racks

What is an AI compute rack? An AI compute rack is a specialized server rack designed to house and support high performance computing (HPC) infrastructure required for artificial intelligence

Supermicro Rack Scale AI Solution

These application-optimized servers are ideal for medium to very large AI training scenarios and contain dual AMD or Intel CPUs and eight high-performance NVIDIA GPUs. This purpose-built highest



Custom Built AI Server Racks , Build Your Own AI

Our AI server racks are purpose-built for high-density AI servers, GPUs, and high-performance computing environments.



IBM pumps-up AI, security for new enterprise Power11

IBM Power11 servers expected to help enterprise customers grow AI infrastructure and hybrid cloud ecosystems.



AI Server Market Size, Share, Global Trends Report

AI Server Market Size, Share and Trends Analysis Report By Processor Type (GPUs, CPUs, FPGAs, ASICs), By Form Factor (Rack-Mounted

Housing GPU servers for AI workloads

Our modular AI data centers can be expanded with additional modules and racks. This allows your secure AI infrastructure to grow precisely in line with your



Choosing the Right AI Server Rack for Your Needs

Discover how to choose the right AI server rack, featuring durability, cooling efficiency, scalability, and security, to optimize your AI infrastructure.



AI Server Racks: AI Infrastructure Server Solutions

This article explores the critical role of AI server racks, the importance of robust AI infrastructure, and the emerging trends shaping the future of AI



Accelerating AI Innovation: New Servers and Integrated Rack

Two new Dell PowerEdge servers, XE7740 and XE9685L, will be offered in the new Dell Integrated Rack 5000 (IR5000) series as a part of the Dell Integrated Rack Scalable Systems (IRSS)

Sep 25, 2025

September 2025 - eRacks Systems, a leading provider of open-source rackmount servers and workstations, today announces the launch of the eRacks/AILSA -- a compact, 2U rackmount AI



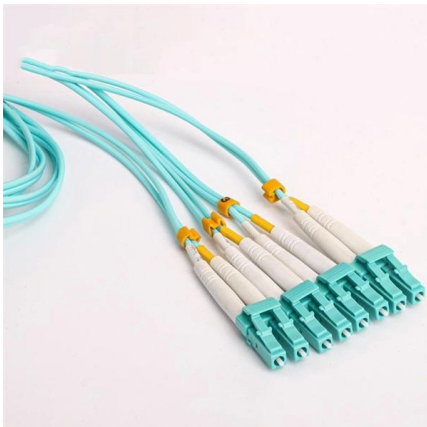
AI Servers, GPU Servers

Standard rackmount form factors with flexible compute, memory, and storage for a range of enterprise and cloud data center applications. Multi-GPU configurations



AI Server Racks , High-Performance Rack Cabinets for Advanced

AI server racks are specialized rack cabinets designed to support the physical and operational demands of artificial intelligence, machine learning, and high-performance computing workloads.

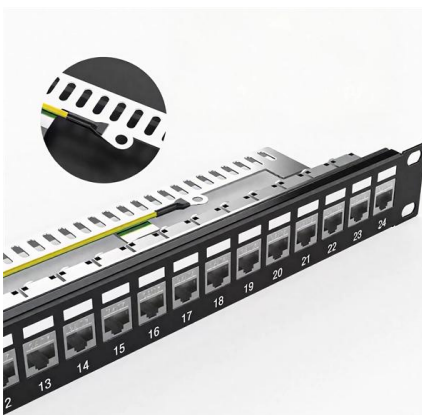
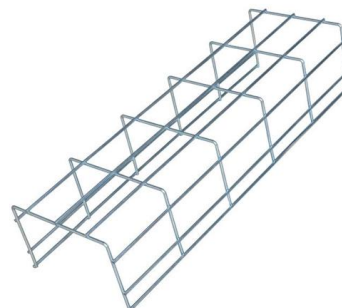


AI Servers, GPU Servers

Whether your AI-ML projects are in development, training models and ingest stage, or inference outputs, Pogo Linux has artificial intelligence integrated rack

Vera CPU Rack for AI Factories , NVIDIA Data Center

Purpose-built for reinforcement learning and agentic AI, NVIDIA Vera CPU Rack delivers dense, energy-efficient rack-scale infrastructure for AI factories.



AI Compute Rack Definition , AI Server Racks , AI Racks

AI compute rack--a specialized server rack designed to house and support high performance computing infrastructure required for artificial intelligence workloads.

Affordable Server Racks for AI Startups:



What You Need

Affordable, U.S.-engineered server racks built for AI startups. Maximize scalability and performance without breaking your budget. Call 877-429-7225 today.



Rack-Based Architecture for Artificial Intelligence and Machine

We'll cover the best practices for using rack-based architecture in artificial intelligence and machine learning applications. This post will discuss the importance of real-time data

AI Server Racks , High-Performance Rack Cabinets for Advanced

AI server racks are engineered for high-performance computing environments with elevated power and thermal demands. Designed to support advanced compute hardware and scalable infrastructure



eRacks/AINSLEY

Not your typical AI server. While most AI servers chase the biggest, flashiest GPUs (and the five-or-six-figure price tags to match), we've taken a smarter, leaner



RACKMOUNT Manufacturer of Industrial

Industrial Computers, AI servers and GPU servers manufacturer



FlashStack for AI: Scale-Out Infrastructure for Deep Learning

Introduction Advances in deep neural networks have prompted a profusion of new applications for AI. Powerful new tools and techniques have enabled breakthroughs in applications as diverse as self

Contact Us

For datasheets, pricing, or custom high-speed optical interconnect solutions, please visit:
<https://www.syropy.com.pl>