

Rack UPS power distribution box configuration





Rack UPS power distribution box configuration



Handbook: Quick guide to power distribution

Whether you need integrated power distribution within a few racks or power throughout your data center, there are many solutions to consider when building out your power infrastructure.

Rack Power Distribution Unit Installation Sheet

Installation and Configuration Before using the Rack PDU, read and follow all safety information in the Rack Power Distribution Unit Safety Information document, included with this product.

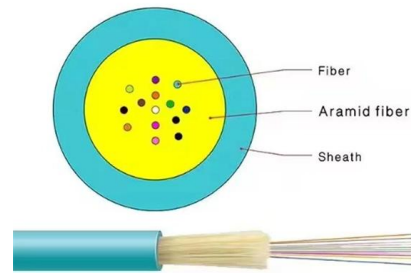


Rack Powering Options for High Density

As rack enclosures have become the standard means for housing and organizing computing and communication systems, the power distribution system for the rack enclosure must adapt to these

Rack Power Distribution Unit (PDU) Installation Instructions

Provides installation instructions and DHCP network information for managed per outlet Rack Power Distribution Units.



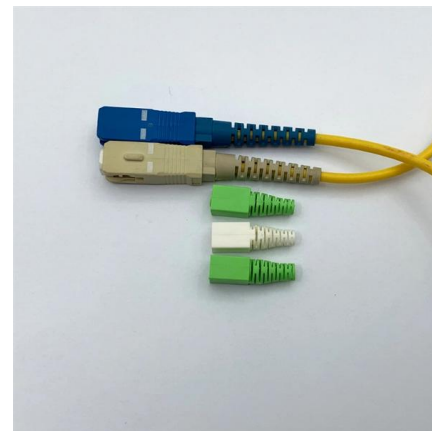
Rack Power Distribution Unit Tutorial

This means that, with a rack power distribution unit and its switching ability you can turn on servers or other equipment from hundreds of miles away via LAN, dial-up, etc. Obviously, you can also power



Comparing UPS System Design Configurations

There are five principle UPS system design configurations that distribute power from the utility source of a building to the critical loads of a data center. The selection of the appropriate configuration or



Complete Guide for Power Distribution in Servers, Racks, and Data

The guidance provided in this document enables informed decision-making, resulting in reliable, efficient, and scalable power distribution solutions tailored to specific operational requirements.



Power Distribution Unit



Make sure the mains wire and breakers in the building are enough for the rated capacity of UPS to avoid the hazards of electric shock or fire.
NOTE: Do not use the wall receptacle as the input power source



How To Wire a Server and Network Rack , Tips & Best

Network racks are also seen with UPS devices in the event of power failure. Both rack types come in floor standing and wall mount options, but server



UPS configuration and sizing

The IBM ^ xSeries Rack Configurator provides an easy-to-use tool that helps design the optimum layout. The configurator helps customers check, correct and report the following:



Rack Mounted Power Distribution Panels for Row Data Centers

General Information This manual provides instructions to install two configurations of the Power Distribution Panels (PDP) for the Easy Rack PDP System Cabinet. Each of the Maintenance Bypass



APC Rack Power Distribution & Rack



Systems Pocket Guide WW

APC Rack PDUs, when combined with StruxureWare™ Data Center Operations, help provide an instant overview of data center operations with additional inventory management, PUE calculation,



Solved: rack power feeds and distribution advice

Because we're not using the full capacity at the moment, we can use a smaller ups, and an ats for extra security. In a later stage (full rack, maybe some blades) the A feed would probably



Product Catalog



Dell RapidPower Power Distribution Units Installation Guide

This document describes how to install Dell™ RapidPower power distribution units (PDUs) in 42-unit (U) and 24-U rack cabinets. The PDUs come in two basic types: standard PDUs, which have locking



What is a UPS Rack Mount? A Comprehensive Guide to

A UPS rack mount is an uninterruptible power supply (UPS) unit designed specifically to fit within a standard 19-inch server rack, providing reliable backup power and protection to critical IT



High Density Rack PDU , Configure an HD Rack PDU

Configure an HD Rack PDU to fit your equipment specifications and the needs of your business. Use the HD Rack PDU Configurator at Eaton to learn more.



How to Power Server Cabinet PDUs from a UPS System

A blog guide on how to connect and power server cabinet PDUs

How to Power Server Cabinet PDUs from a UPS System

A blog guide on how to connect and power server cabinet PDUs from uninterruptible power supplies covering PDU outlet types, UPS ratings and



Build Your Custom Rack Power Distribution Unit (PDU) for Your Data Center

Build your Custom Rack Power Distribution System for your specific data center needs to help optimize power, energy, and



Rack Mounted Power Distribution Panels for Row Data Centers

This manual provides instructions to install two configurations of the Power Distribution Panels (PDP) for the Easy Rack PDP System Cabinet.



UPS configuration and sizing

Rackable UPS models xSeries Rack Configurator software The variety of sizes, access, component cabling and power supply requirements of servers, accessories and storage components make

Rack PDU Installation and Operational Manual

Rack PDU Installation and Operational Manual
Date: Mar 31 2025 Type: User guide Languages: English



How To Properly Install Server Rack Power Distribution

Learn how to correctly install power distribution units (PDUs) in your server rack for efficient and reliable power management.





Data Center Power Distribution Units

Shaping the Future of Rack Power Distribution
Leaders in rack power distribution units for nearly 40 years, Server Technology PDUs are the choice for Fortune 100

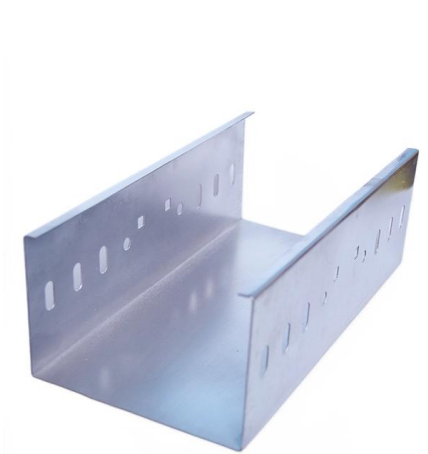
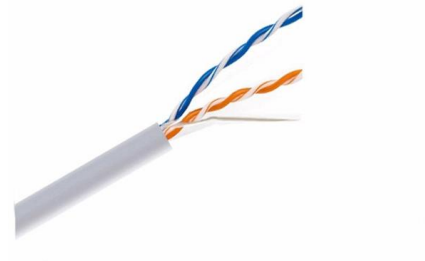


Unlocking the Power: Understanding UPS Design

Limitations: Most expensive configuration due to numerous redundant units. Choosing the Right UPS Configuration In the ever-changing landscape of critical

Selection of the UPS configuration

Sizing of the backup UPS must take into account the number of UPS units downstream, their power ratings and their criticality, as well as any future plans for the installation (generally speaking, the



UPS DESIGN CONFIGURATIONS

Although there is a spectrum of design configurations, there are five principle UPS arrangements often referred to as; 'Capacity' (N), 'Isolated Redundant', 'Parallel Redundant' (N+1), 'Distributed



Eaton FERRUPS Rackmount UPS Installation Guide

The Eaton® FERRUPS® Rack Mount uninterruptible power system (UPS) is available in plug-receptacle or hardwired models. The plug-receptacle models have an input plug and receptacles on the rear panel.



Webit Cabling

Contact Us

For datasheets, pricing, or custom high-speed optical interconnect solutions, please visit:
<https://www.syropy.com.pl>