

Quota for wiring sleeve at the bottom of the distribution box





Quota for wiring sleeve at the bottom of the distribution box



National Electric Codes for Wire in Electrical Boxes NEC-Table370-16a

The National Electrical Code explains the Maximum Number of Wires that can be installed into a box, otherwise known as Box Fill. This code is based upon the type of box, wires, wire sizes, wire clamps

Division 26

Sleeves shall be provided by Electrical Contractor for all perimeter unit connections.



Embedded Installation Of Distribution Box

Due to the long time interval between the embedding of the box and the installation and wiring of the box panel, the box shall be disassembled with the box cover (door) and the panel first,

A Step-by-Step Guide to Wiring an Electrical Panel Box

A Step-by-Step Guide to Wiring an Electrical Panel Box An electrical panel box, also known as a breaker box or a distribution board, is a crucial component of any



Distribution boards components

Distribution boards (generally only one in residential premises) usually include the meter (s) and in some cases (notably where the supply utilities impose a TT earthing system and/or tariff



How to Improve the Installation Quality of Distribution Boxes

Learn key methods to enhance distribution box installation quality, including location, height, wiring, and safety compliance.



Electrical distribution box wiring technical specifications

Before the terminal crimping, you must first set the printed line number sleeve, the sleeve should be set in the bare terminal sleeve part beyond 1 ~ 1.5mm, the font direction parallel to the



Equipped with a removable **Mounting Plate** inside the enclosure, enabling customized drilling and secure component mounting.



House Wiring Distribution Board - Wiring Flow Schema

House wiring is an essential part of any home's electrical system and a necessary component for its smooth functioning. The distribution board is the heart of the



How to Install a Cable Distribution Box Safely and

In modern electrical systems, cable distribution boxes (also known as electrical distribution boxes or distribution boxes) play a crucial role as the key



DIY Wiring a Consumer Unit and Installation

/ Consumer Unit Background Wiring a Distribution Board is vital in any electrical installation. All the electrical sub circuits are originated from a Distribution



Electrical System Technical Specification: Distribution

Technical specifications for electrical distribution boards, covering standards, construction, and installation. For electrical engineers and contractors.





Understanding Distribution Boxes: A Comprehensive Guide

Learn what a distribution box is, its types, and how to choose the right one for your project. Includes clear examples and expert tips.



Cautions and Requirements for Installation of

Distribution box is a low-voltage distribution device which assembles switchgear, measuring instruments, protective appliances and auxiliary equipment in a closed

What is a Distribution Box? - A Comprehensive Guide

A distribution box organizes and controls power flow, ensuring safety and efficiency in electrical systems.



TECHNICAL SPECIFICATION I.R.O. 63,100,160 & 315 KVA

1. SCOPE: This Specification covers the design, manufacture, testing at works and supply of Distribution Boxes made out of CRCA MS for controlling the L.T. feeders from the L.T. side of Distribution



Regulations / guidance regarding siting of distribution

Hello All Is there any regulations regarding the siting of distribution boards like level area in front of board and dimensions of area in front of board etc?



on video How to Wire a Home Distribution Box

How to Wire a Home Distribution Box - Step-by-Step , Distribution DB box wiring diagram
Welcome to our channel! In this video, we'll walk you through the

Sub-Main Distribution Board Specifications , PDF

06 SUB-MAIN DISTRIBUTION BOARD - Free download as PDF File (.pdf), Text File (.txt) or view presentation slides online. Sub Main Distribution Board Electrical



Requirements And Specifications For Installation Of

The bottom edge of the distribution box is usually between 1.5 meters and 1.8 meters above the ground, which is convenient for operation and



2026 NEC Electrical Junction Box Sizes Guide:

Electrical Junction Box Sizes Selecting the correct size of electrical junction box is a critical decision for any electrical project in the United States,



Wiring requirements of distribution box

The connection between bridge and distribution box (cabinet) is connected with rubber plate to protect wires and cables. The secondary circuit wiring distribution cabinet shall complete the secondary

Electrical wiring and busbar arrangement of distribution box

The distribution box is composed of independent single box connected by bolts, and the bottom of the box is composed of 3mm aluminum zinc coated steel sheet solid welding plate at the front and back.



The Complete Guide to Distribution Box: Installation, Types & More

Blog The Complete Guide to Distribution Box: Installation, Types & More By Admin Aug 2, 2025 No Comments # distribution box Introduction Electrical systems power our homes, offices, and



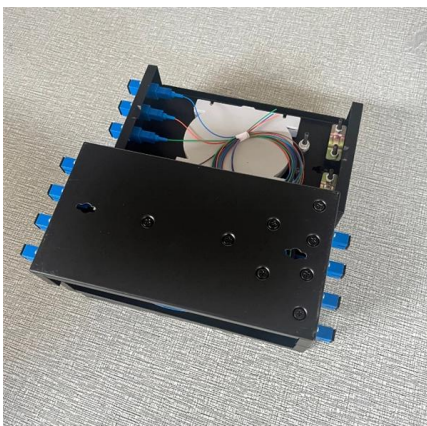
The installation requirements for the distribution box

In this guide, we'll break down everything you need to know to install a distribution box correctly and confidently. Choose the right box based on

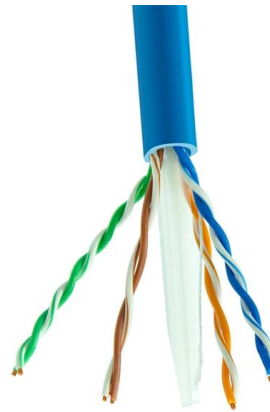


IEC Standard for Power Distribution Board Design and

The IEC has published multiple standards that apply to Power Distribution Board Design. These documents cover construction, protection,



Wiring Best Practices: A Guide to



Technical Requirements for Distribution Box in Electrical Industry

16. The distribution box system drawings are shown in the attached drawings. The above is the technical requirements of distribution box. On the premise of ensuring safety, the distribution box is still



IEC Standard for Power Distribution Board Design and

Designing a power distribution board is not just about placing components inside a metal box. It requires a deep understanding of international



Distribution Boards

As the heartbeat of any electrical system, distribution boards play a crucial role in ensuring a safe and efficient power supply. Whether you're a homeowner,



Contact Us

For datasheets, pricing, or custom high-speed optical interconnect solutions, please visit:
<https://www.syropy.com.pl>