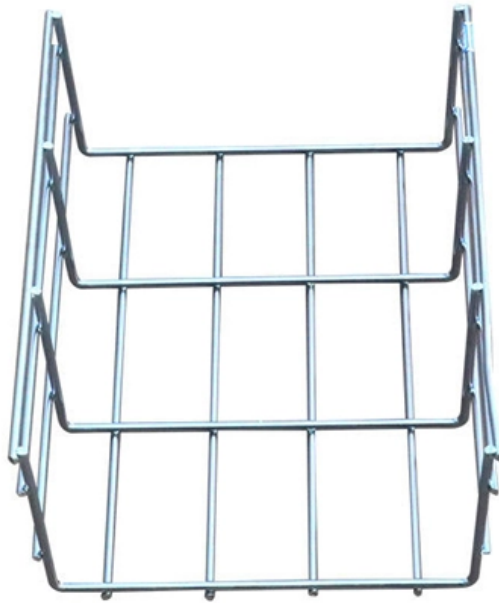


Quota for installing 10km optical modules





Quota for installing 10km optical modules

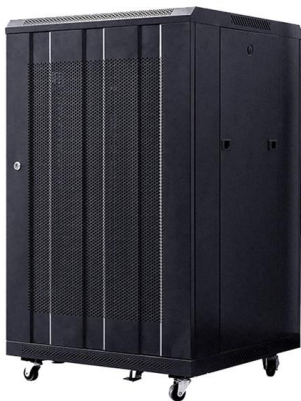


10GBASE-LR SFP+ , From EUR12 , EDGE Optical Solutions

10GBASE-LR SFP+ transceiver compatible with 80+ brands. 1310nm, 10km SMF, 6dB budget. IEEE 802.3ae, DDM, CE/RoHS. From EUR12.

10GBASE-LR SFP+ 1310nm LC 10km SMF Optical

Asterfusion compatible 10GBASE-LR SFP+ Transceiver Module, up to 10km over SMF, applied for 10 Gigabit Ethernet, larger campus networks, enterprise



Huawei Technical Support

Discover Huawei's technical specifications and features for 10Gbps SFP optical modules, enhancing connectivity and performance in enterprise networks.

Nokia 474386A.101 FOUG SFP+ 10GBase-LR 1291nm

The Nokia 474386A.101 FOUG SFP+ Optical Transceiver is a CWDM-based 10G long-reach module designed for advanced transport, backhaul, and metro



10GBASE-LR SFP+ 1310nm 10km LC SMF Optical Transceiver

Operating at 1310nm wavelength, it provides reliable transmission up to 10km, making it ideal for long-reach interconnects between switches, routers, and servers.



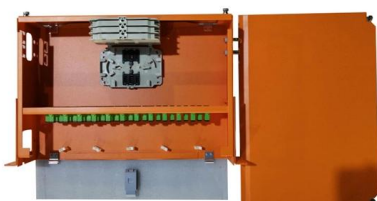
Boost your 80km links to 100G with QSFP-100G-ZR4-S

Rather than installing or leasing new fiber to meet demand, network operators can upgrade existing 10G modules to the QSFP-100G-ZR4-S to gain a



SFP+ Single Mode LC Module (10km)

Transmission distance of up to 10km (6.21 mi.)
Duplex LC optical interface Supports data rates of up to 10.31Gbps Supports 1310nm single mode network





optical transceiver sfp+ 10g single mode module 1310nm 10km lc

Upgrade networks with our optical transceiver sfp+ 10g single mode module 1310nm 10km lc. This LC transceiver delivers effortless 10km connectivity for data centers and servers.



Potential solutions for >50G bidi objectives

We already have quite a fleet of BiDi optical modules, with a range of wavelength plans and power levels and damage thresholds And this promises to only get larger: 100G BR40 and 200G are coming

10G BiDi SFP+ Modules: A Guide to Single-Fiber 10G

Explore how 10G BiDi SFP+ modules enable high-speed, bidirectional data over a single fiber, cutting costs, saving fiber, and simplifying network deployment.



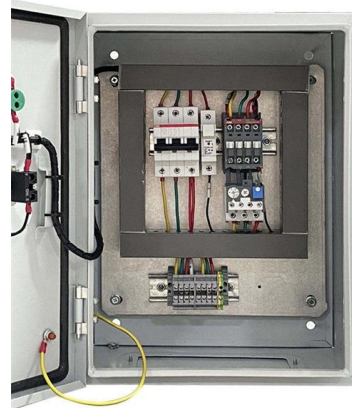
SFP-GE-LX-SM1310-IN

SFP-GE-LX-SM1310-IN Gigabit Single-Mode 10km Optical Module Specification Download How to buy



10G Optical Modules: Short-Range vs. Long-Range Comparison Guide

Understand short-range and long-range 10G optical modules in terms of distance, budget, energy use, and scalability to make the right choice.



10G SFP+ Optical Transceivers , Transceiver Module

FS 10GbE SFP+ module solutions provide a wide variety of 10 Gigabit Ethernet connectivity options for data centers, enterprise wiring closets, Internet Service

FOA Standard For Installing Fiber Optic Cable Plants

Fiber optic cable may be installed indoors or outdoors using several different installation processes and as appropriate for the cable type being installed. Outdoor cable may be direct buried, installed



SFP+ BIDI 10G 80km Optical Transceiver (Pair) , GigOptics

GigOptics SFP+ optical transceivers are high performance, cost effective modules. They are fully compliant with MSA (Multi-Source Agreement) and tested to ensure quality and outstanding network



10 Gbit/s SFP+ Optical Module

You can use different levels of 10 Gbit/s SFP+ optical modules only with 10 GE interfaces. The wavelength of these 10 Gbit/s SFP+ optical modules can be 850 nm, 1310 nm, or



SFP-10G-LR-1310nm DDM 10KM Optical Transceiver

When purchasing optical modules, need to confirm whether it can be compatible with your devices. Common switch brands like CISCO, HUAWEI, H3C, Juniper, D

10G SFP+ Optical Module Costs and Technology

The common 10G SFP+ SR module has a transmission distance of 300m, and the 10G SFP+ LR module has a transmission distance of 10km,



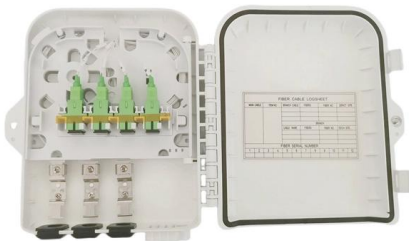
The Advantages of 10Gb/s 10km SFP+ Optical

In today's high-speed networking environments, 10Gb/s SFP+ optical transceiver modules have become indispensable components for enabling



100G QSFP28 LR4 10km Optical Transceiver GQS-SPO101-LR4C

Description This product is a 100Gb/s transceiver module designed for optical communication applications compliant to 100GBASE-LR4 of the IEEE P802.3ba standard. The module converts 4



What Is 10GBASE-LR? SMF 1310nm 10km SFP+ Explained

10GBASE-LR is a 10-gigabit Ethernet optical standard that operates at 1310 nm over single-mode fiber (SMF), supporting link distances of up to 10 km.

10Km SFP+ Optical Module

This is a standard SFP+ optical module. It uses two single mode optical fibers and the speed rate can up to 10Gbps, transmission distance up to 10km. This product



LINK-PP LS-SM3110-10C: Your Ultimate 10G SFP+ LR

Explore the LINK-PP LS-SM3110-10C 10G 10km SFP+ module. Discover specs, applications & why it's a top choice for reliable, long-distance



Fiber Optic Cable Installation and Handling Instructions

Introduction Fiber optic cables can be easily damaged if they are improperly handled or installed. It is imperative that certain procedures be followed in the handling of these cables to avoid damage



1000BASE-LX SFP Transceiver

Get the 1000BASE-LX SFP transceiver for compatible fiber optic connections up to 10km at 1310nm wavelength with LC connector. Buy now!



XG-SFP-LR-SM1310 10GBASE-LR SFP+ 1310-nm 10-km DOM

XG-SFP-LR-SM1310 10GBASE-LR SFP+ 1310-nm 10-km DOM Duplex LC SMF Optical Transceiver Module Applicable to data center and campus networks, enabling cost-effective, efficient, and high



10GE SFP+ Optical Modules

If the SFP-10G-ER-1310 is connected to a 10Gbase-ER standard optical module (1550nm, 10GE, 40km), the maximum transmission distance is only 20km due to different specifications such as wavelength



Reach Further, Faster: Your Ultimate Guide to Long-Range 10G Optical

Long-range 10G optical modules enable high-speed data over distances up to 80km. Learn about types, specs, compatibility, and choosing the right module.



Contact Us

For datasheets, pricing, or custom high-speed optical interconnect solutions, please visit:

<https://www.syropy.com.pl>