

# **Quality of Stainless Steel Explosion-proof Distribution Boxes**

**PROFESSIONAL  
FIBER OPTIC SOLUTIONS**



High-Density Connectivity  
& Reliable Management

**DURABLE METAL  
ENCLOSURE**      **PRECISION  
TERMINATION**      **INDUSTRIAL GRADE  
PERFORMANCE**





## Quality of Stainless Steel Explosion-proof Distribution Boxes

---

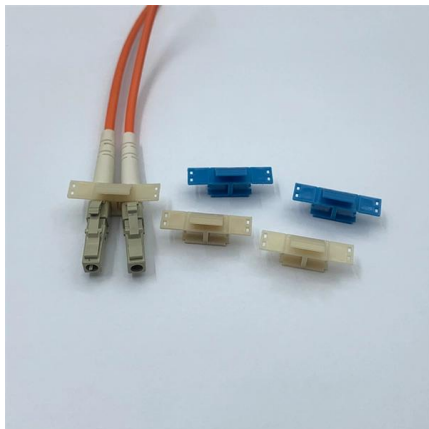


### Explosion proof distribution box standards and installation issues

II. explosion-proof distribution box box body part  
Distribution box adopts stainless steel box (stainless steel material is Baosteel 304 or above), the color is stainless steel color, the thickness of the box is

### 5 Key Factors to Consider When Selecting Explosion Proof

Consider certifications, enclosure ratings, electrical needs, materials, and maintenance when selecting explosion-proof distribution boxes.



### Explosion-Proof Electrical Distribution Boxes: Applications in

Explosion-proof electrical distribution boxes are essential for safety in hazardous environments. These specialized enclosures are built to contain internal explosions and stop the ignition of flammable

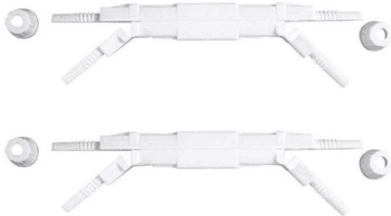
### Stainless Steel Explosion-Proof Corrosion-Resistant Distribution Box

The enclosure is formed by die-casting aluminum alloy or welding carbon steel or stainless steel. Aluminum alloy/carbon steel surfaces feature high-pressure electrostatic powder coating, while



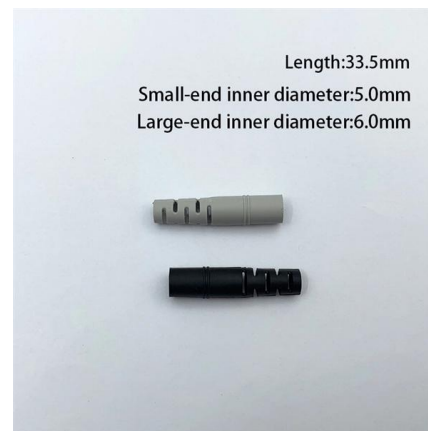
### Terminal and Junction Boxes (Ex d) , Explosion Protection

The enclosures are manufactured from copper-free aluminum and stainless steel, offering outstanding resistance to corrosion, high impact resistance, and long-term durability even under extreme



### CZ1390 Explosion-proof distribution boxes

CZ1390 Explosion-proof distribution boxes Home  
> Atex Certified Products > Atex Junction Boxes  
>



### Distribution box solutions for explosion-proof environments in

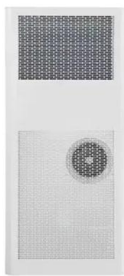
Real-World Scenario: North Sea Oil Platform At the Magnus platform, stainless steel distribution boxes weren't just protecting against explosions - they were combatting constant saltwater corrosion.





## Stainless Steel Explosion-Proof Junction Boxes (IP66)

Learn how stainless steel explosion-proof junction boxes improve hazardous-area safety. See IP66 sealing, 304/316 options, grounding, and E-abel



## Terminal boxes , Junction boxes , Ex , Ex e , Ex d , ATEX , Explosion

We offer bespoke, custom-made terminal boxes and terminal box combinations as well as standard products with short delivery times. Our products are certified for installation technologies all over the

## 5 Key Factors to Consider When Selecting Explosion Proof Distribution Boxes

Selecting explosion-proof distribution boxes protects the safety of your staff in any potentially hazardous workplace. HEXLON stands out as a trusted provider of explosion-proof



## ESI Junction & Terminal boxes

BARTEC stainless steel housings and distribution boxes are designed and



## ESI Junction & Terminal boxes

BARTEC stainless steel housings and distribution boxes are designed and approved for Zone 1 and 2 as well as Zone 21 and 22. They are particularly suitable for



## explosion-proof-stainless-steel-corrugated-pipe

Our stainless steel corrugated pipes stand for the highest quality, durability, and precision. Corrosion-resistant, flexible, and reliable - the ideal solution for demanding applications.

## DISTRIBUTION BOARDS

These are available in a range of materials including Stainless Steel, GRP & Sheet Steel from IP42 (Indoor) to IP 66 (Outdoor) Applications.



## Stainless Steel Explosion-Proof Corrosion-Resistant Distribution Box

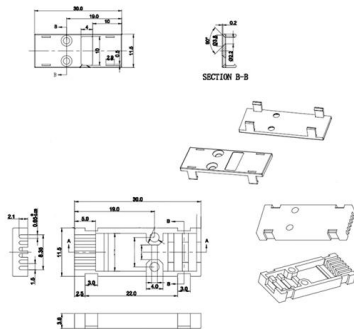
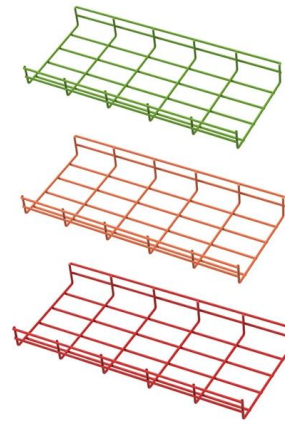
BX51 Stainless Steel Explosion-Proof Distribution Box is engineered to control power distribution safely in explosive-prone areas.





## Ex Enclosure Systems

If you are thinking about explosion protection in areas where the chemical or corrosive load is very high, there is no getting around our Ex stainless steel

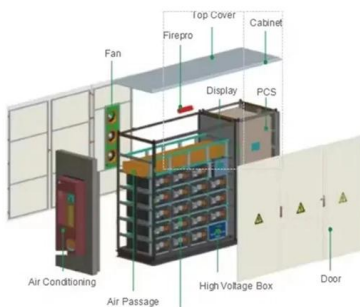


### **BXM (D)8061 Explosion proof Distribution Box**

Warom BXM(D)8061 Explosion proof Distribution Boxes are manufactured from stainless steel and can be customised to client requirements

### **Weatherproof Stainless Steel Distribution Box**

Weatherproof Stainless Steel Distribution Box  
The Stainless Steel Distribution Box is a rugged and versatile enclosure that is ideal for a wide variety of applications. It



### **Terminal Boxes , Explosion Protected , R.STAHL**

High-quality terminal boxes made of 316SS or FRP rated NEMA 4X and IP66 protection making them perfect to use in harsh and hazardous environments.



### Explosion-proof distribution box: the "invisible guard" protecting

An explosion-proof distribution box is a special electrical equipment designed for flammable and explosive environments. Its shell is made of high-strength materials (such as



### 190423\_ESS\_201175\_VARNOST\_EN\_JS dd

BARTEC stainless steel housings and distribution boxes are designed and approved for Zone 1 and 2 as well as Zone 21 and 22. They are particularly suitable for applications under extreme

### Ex Junction Boxes and Atex Enclosures - Atex Delvalle

Our explosion protection Ex enclosures and equipment are comprehensive and widely configurable. Reliable in use and convenient to install, their overall quality



### Analysis Of The Mechanical Properties Of Stainless Steel Distribution

Stainless steel, as a primary component, demonstrates not only superior corrosion resistance but also crucial mechanical properties, which are essential for engineering design evaluation.



### **Explosion-proof junction box, Explosion-proof terminal**

Find your explosion-proof junction box easily amongst the 44 products from the leading brands (4B Braime Components, KROMA MEC, STAHL, ) on



### **Terminal Box , Ex d , EJBX Series**

The enclosures are certified Ex d IIB+H2 and Ex tb as well as "explosion-proof". They are available in many sizes, a wide range of operating elements and

### **Explosion-Proof Corrosion-Resistant Distribution Box BXM (D)8030**

BXM(D) 8030 Explosion-Proof Corrosion-Resistant Distribution Box, designed for hazard zones, ensures safe power control and prevents ignition risks.



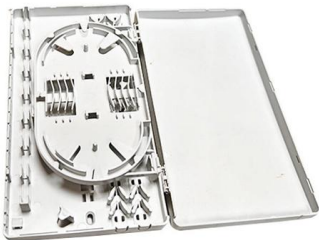
### **Stainless Steel Explosion Proof Enclosures: Safety & Durability**

This section compares top-performing stainless steel explosion proof enclosures based on real-world supplier data, focusing on quality, cost efficiency, and buyer alignment.



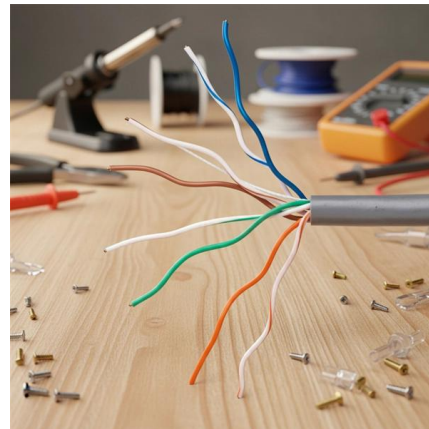
## Jiu nuo Explosion-Proof Wiring Box

Protect your electrical components with the Jiu nuo explosion-proof wiring box. This customizable stainless steel distribution cabinet is ideal for demanding



## Explosion Proof Enclosure

The company QIJUN designs and manufactures a range of hazardous area stainless steel enclosures that provides comprehensive protection for your applications in



## What is Explosion Proof Distribution Box?

As technology advances, these boxes will continue to evolve, incorporating smarter features to offer even greater protection. Feice Explosion-proof Electric Co., Ltd.,

## Contact Us

For datasheets, pricing, or custom high-speed optical interconnect solutions, please visit:  
<https://www.syropy.com.pl>