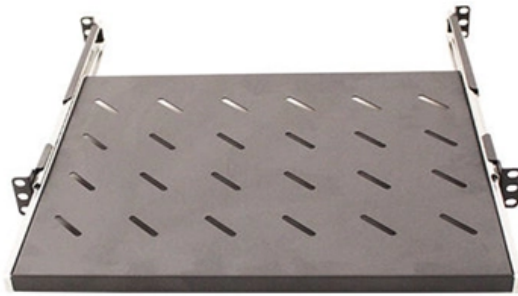


Quality Assurance for Large-Span Cable Trays



Webit Cabling





Overview

Most importantly, safety assurance in cable trays requires multiple checkpoints, advanced testing, and monitoring to confirm that they will perform under severe environments and provide electrical safety. All illustrations, descriptions and technical information included in this document are provided as indications and can cable trays are equivalent. The mechanical and electrical characteristics, tests, certifications, overall quality management, recommendations mentioned. Cable tray (or cable ladder) systems are a popular alternative to electrical conduit systems, as they have an outstanding record for dependable service, design flexibility and cost savings in commercial and industrial applications. This article explores how cable tray manufacturers adhere to stringent industry standards to maintain cable tray quality assurance, focusing on the key benchmarks and. Download VE 2 from the NEMA website (registration required) or purchase a hard copy from Global/IHS. This standard specifies the requirements for nonmetallic cable trays and associated fittings designed for use in accordance with the rules of the Canadian Electrical Code (CEC) Part 1, and the.



Quality Assurance for Large-Span Cable Trays

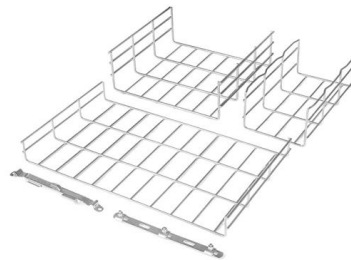


GUIDE CABLE TRAYS TECHNICAL

NEMA VE 1-2017 Specifies requirements for metal cable trays and associated fittings designed for use in accordance with the rules of Canadian Electrical Code, Part I and the National Electrical Code®

B-Line series Cable Tray Design Considerations

As an industry leader in cable tray, Eaton offers one of the widest ranges of cable management solutions available in the market today with its B-Line series portfolio. With unmatched quality and service, we



Codes and Standards , Cable Tray Institute

The Cable Tray Institute is making available the current edition of this practical guide for the proper installation of aluminum or steel cable tray systems. These guidelines will be useful to engineers,

Practical Guide to Cable Tray Procurement & Quality

I've seen trays fail because of poor coatings, undersized supports, or rushed installations - all of which caused costly rework. Getting this right at



Quality Assurance Plan for Cable Trays

Qap Cable Tray - Free download as PDF File (.pdf), Text File (.txt) or view presentation slides online.

Cable Tray Technical Guide A practical guide to product selection and

Cable tray length is selected based on the load to be supported, the distance between the supports (also referred to as the span), and handling and installation constraints.



LEGRAND CABLE TRAYS TECHNICAL GUIDE

Not all cable trays are equivalent. The mechanical and electrical characteristics, tests, certifications, overall quality management, recommendations mentioned in this technical guide only apply to our



How Cable Tray Manufacturers Meet Quality Standards

Quality control in cable tray production directly influences the total cost of ownership. Projects utilizing certified, rigorously



Full cable tray systems specification document

1.05 QUALITY ASSURANCE A. Manufacturers: Firms regularly engaged in manufacture of cable trays and fittings of types and capacities required, whose products have been in satisfactory use in similar

Cable Tray Installation Quality Assessment Guide

Learn about cable tray installation quality assessment with our comprehensive guide: material, installation, and inspection for reliable cable tray



Guide to cable support systems

The systems allow large support spacings of wide span systems or the multilayer arrangement of cable trays and cable ladder systems. The systems comprise I hanging supports, support brackets, head



Cable routing under the toughest conditions

Optimum power supply Industrial plants and technical companies require effective cable routing. Our cable trays and cable ladders from the wide span system ensure that cables can be routed easily



Long-Span Ladder Cable Tray System

The length of the ordinary bridge is about 2M, and the length of the large span bridge can be customized, 3m, 6m, 8m, 12m. The long-span cable tray adopts the

Cable Tray Quality Assurance Plan

Final inspections on the completed cable trays, including checks for surface defects, coating uniformity, thickness, adhesion, dimensions and load capacity. The plan



Technical information

Technical information CSA and NEMA loading classes The standard classes of cable trays, as related to their maximum design loads and to the associated design support spacing based on a simple beam



Inspection Methods for Cable Trays: A Comprehensive

Cable trays play a crucial role in ensuring the safety and efficiency of electrical and communication systems. With their responsibility to manage cables



26 05 36 Cable Trays for Electrical Systems

SCOPE This section includes: Metal cable trays
Nonmetallic cable trays
Cable tray accessories
Related Requirements: Section 260010
"Supplemental Requirements for Electrical" for additional



Cable Tray Technical Guide A practical guide to product selection and

A practical guide to product selection and installation This guide for engineers and installers has been developed by ABB as a practical reference regarding cable tray characteristics, installation, and



Quality Cable Tray Manufacturers Comply with Industry Standards

This article explores how cable tray manufacturers adhere to stringent industry standards to maintain cable tray quality assurance, focusing on the key benchmarks and certifications that

100+ Essential Questions Answered About Cable Trays:

Discover over 100 expert answers about cable



trays, covering key topics like material selection, load capacity, installation methods, and maintenance.

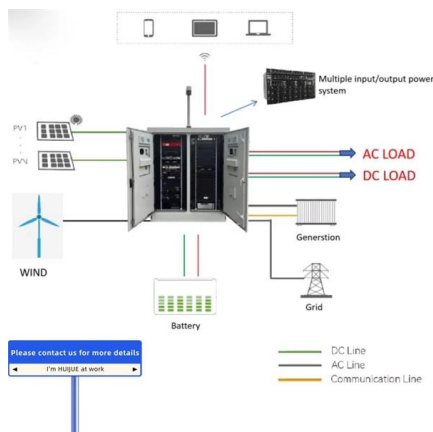
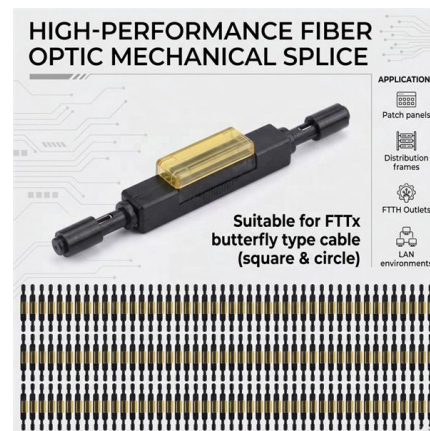


What Are Long Span Cable Trays

What are long span cable trays? Learn how they reduce support points, save costs & suit stadiums, factories. UK expert guide with FAQs.

Guide to cable support systems

Higher specific weights can only be achieved by cables with large cross-sections, which are less bendable and thus can support themselves better and, on account of their larger diameter, have a



Large Span Cable Tray , Heavy Duty Cable Tray Manufacturer

Large span cable trays are designed to support heavy cable loads across long distances without intermediate supports. Made from high-strength galvanized steel or stainless steel, these trays



B-Line series Cable Tray Design Considerations

As an industry leader in cable tray, Eaton offers one of the widest ranges of cable management solutions available in the market today with its B-Line series portfolio. With unmatched quality and service, we



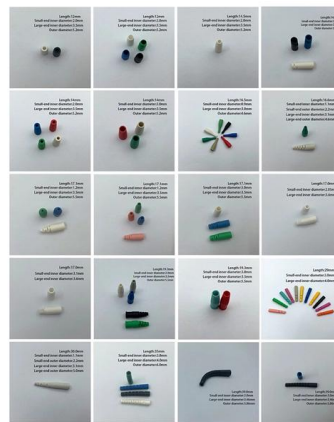
Cable trays, wide span , OBO

Colour 6 products (30 Variants) 30 60 90 5 Variants Wide span cable tray WKSG 110 FS To product 5 Variants Wide span cable tray WKSG 110 FT To product



How to Calculate Cable Tray Span for Your Project

It influences how the tray can accommodate varying loads, including different cable types and weights. Understanding the specific span requirements for various tray materials (such as steel,



Contact Us

For datasheets, pricing, or custom high-speed optical interconnect solutions, please visit:
<https://www.syropy.com.pl>