

QSFP28 Optical Module 200G

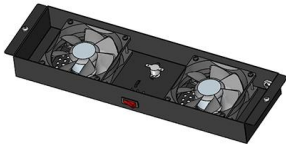




QSFP28 Optical Module 200G

Optical Transceiver Module

Fiber optic module manufacturer, ETU-Link supply full model optical transceivers, including standard 8g/10g/25g/40g/100g sfp+ optical modules and



Eoptolink

Eoptolink - market leader in high speed optical transceivers: 800G QSFP-DD800 & OSFP, 400G QSFP56-DD, QSFP112, OSFP, 200G QSFP56 and QSFP-DD, 100G single lambda QSFP28 and



50KW modular power converter

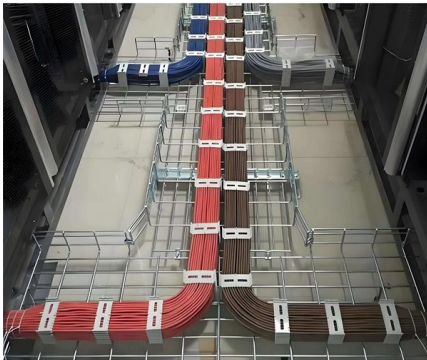


Complete Guide to QSFP-DD, QSFP28, QSFP56,

Complete Guide to QSFP-DD, QSFP28, QSFP56, SFP56, and SFP28 Optical Modules As high-speed networks continue to evolve, optical transceivers like

Custom 40G QSFP+ and 50G SFP56/QSFP28 Modules

WolonFiber manufactures strictly MSA-compliant 40G QSFP+, 50G SFP56, and 50G QSFP28 optical interconnects optimized for mission-critical telecommunications and campus deployments.



How Optical Modules Power the Evolution of 5G Networks

Selecting the right optical transceiver module for 5G deployment involves careful consideration of several critical factors: Data Rate: Must match

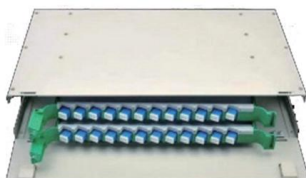
Optical Transceivers SFP SFP28 QSFP28 QSFP-DD 1G to 400G Range

Browse optical transceivers from Pivotal Optics including SFP, SFP28, QSFP28 & QSFP-DD modules. 1G to 400G solutions for data centers & networks. Shop now!



200G QSFP28-DD SR8 100M Optical transceiver

Mechanical Diagram Compatible with the QSFP28-DD Type 2 Specification for pluggable form factor modules.





200G QSFP28-DD LR8 Optical Transceiver

Designed for LAN-WDM 8-wavelength singlemode optical fiber system, it is an eight channels full duplex transceiver, each lane data rate up to 25Gbps, and the highest data rate of the transceiver up to



Optical Transceiver: SFP vs SFP+ vs QSFP28 vs QSFP-DD

This article provides a comprehensive comparison of mainstream optical transceivers, including SFP, SFP+, QSFP+, QSFP28, and QSFP-DD. It explains their technical differences,

The Ultimate Guide to QSFP28-DD: Features, Benefits, and Applications

Discover QSFP28-DD (200G/400G) modules: features, benefits, and applications in data centers, AI/HPC, and telecom. Compare and learn how to choose the right.



Arista DCS-7388-16CD2 , 7388X5 16-Port 100G/200G Module, QSFP56/QSFP28

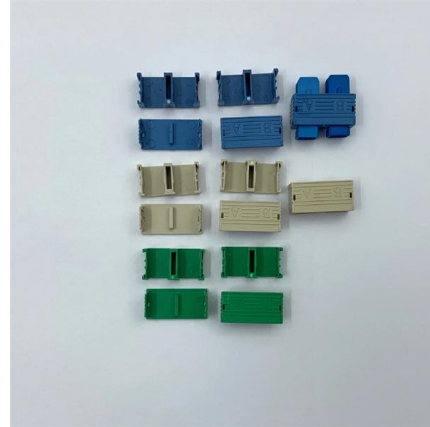
The Arista DCS-7388-16CD2 is a line card module designed for the 7388X5 Series modular chassis, delivering 16 ports of flexible 100G/200G Ethernet connectivity using QSFP28 and QSFP56 optics.





Optical Transceivers / SFP Modules - High-Performance Compatible

Comprehensive Optical Transceivers & SFP Module for High-Speed Networks LINK-PP offers a full range of optical transceivers and SFP module for modern data centers, telecom networks, and

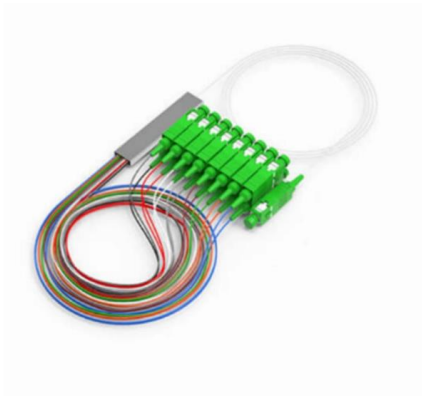


Understanding Optical Modules

On an optical network, a sender needs to convert electrical signals into optical signals before sending them to a receiver, and the receiver needs to convert received optical signals into electrical signals.

What Is QSFP28? A Clear Explanation of 100G Transceivers

Learn what QSFP28 is, how 100G transceivers work, key standards, module types, and common deployment scenarios in modern data center networks.



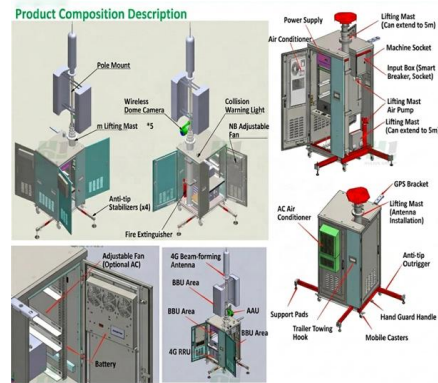
Dell networking transceivers and cables

100GbE QSFP28 ports support both optical and passive copper breakout cables. Each of the four 25 GbE lanes can be broken out into four individual SFP28 interfaces. This solution can be deployed



AOC, DAC, Fiber Optic Transceivers , One-Stop Shop

Online shopping. w/24h-delivery, 7Days & Refund Guarantee. CE, RoHS and ISO9001 Certified. SFP+ Cables, QSFP+ Cables, MiniSAS Cables, XFP Cables,



200G QSFP28-DD Optical Transceiver Modules

The module converts eight channels of 25Gb/s (NRZ) electrical input data to four channels of LAN-WDM optical signals and multiplexes them into a single channel

QSFP28 vs QSFP-DD vs QSFP56, What Are the Differences?

Whether you are confused about 100G QSFP28, 400G QSFP-DD, and 200G QSFP56, this article will give an all-around comparison among QSFP28 vs QSFP-DD vs QSFP56, helping you



QSFP-DD Optical Module Overview: What is the differ?

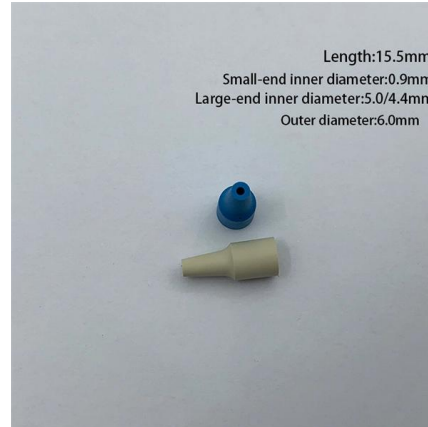
While QSFP+/QSFP28/QSFP56 modules and DAC/AOC are utilized for interconnecting 40G/100G/200G networks. Backward Compatibility As we





200G QSFP28-DD PSM8 10km

The FiberStamp Technologies 200G QSFP28-DD PSM8 1310nm 10km Optical Transceiver Module is a Eight-Channel, Pluggable, Parallel, Fiber-Optic QSFP DD PSM8 for 2x100 Gigabit Ethernet,



200G Optics , HPE Juniper Networking US

Our 2 x 100G modules use Duplex CS connectors, boasting a 40 percent size reduction from Duplex LC. They also allow for two duplexes (four fibers) in a

OEM 100G QSFP28 & 200G QSFP56, QSFP-DD, CFP2

WolonFiber manufactures strictly MSA-compliant 100G QSFP28 and 200G QSFP56, QSFP-DD, and heavy-duty CFP2 optical interconnects optimized for ultra-dense Spine-Leaf topologies and long-haul

DETAILS DISPLAY

Focus On Every Detail



Neat & Clean Layout

Cleaner arrangement of components. Easy to operate



Small Form-factor Pluggable

Small Form-factor Pluggable Small Form-factor Pluggable connected to a pair of fiber-optic cables Small Form-factor Pluggable (SFP) is a compact, hot-pluggable



Contact Us

For datasheets, pricing, or custom high-speed optical interconnect solutions, please visit:

<https://www.syropy.com.pl>