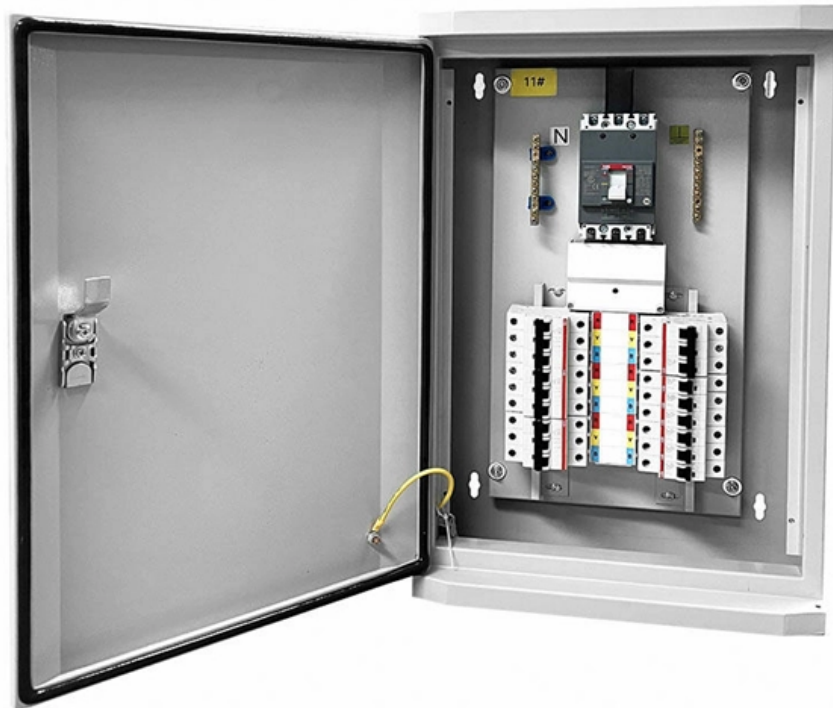


Push-pull installation of distribution box





Push-pull installation of distribution box



How do I mount a power distribution block inside a NEMA 1 pull box?

I read answers here and decided to use power distribution blocks. This is what I bought (Mersen MPDB62163). I never mounted a PDB before, is it compatible with pull boxes like this one?

Electrical Installations: Guide to Pull Box Sizing

Pull boxes simplify wiring installation inside conduit, but it is important to size them as required by the NFPA National Electric Code (NEC).



Step-by-Step Guide to Install MCB Distribution Box

Learn how to safely install an MCB distribution box with this comprehensive guide. Step-by-step instructions to ensure correct installation.



Electrical Pull Box Installation: What You Need to Know

How is an Electrical Pull Box Installed? The installation process for an electrical pull box involves several steps. Here is a brief overview of the process: Planning: Before installation, it is



M12 distributor boxes with push-pull fast-locking and

The new M12 distributor boxes with push-pull fast-locking from Phoenix Contact feature consistent, tool-free and intuitive installation. Master



Summary of key points for construction and installation of distribution

The construction and installation points of distribution boxes and switch boxes are summarized as follows: 1. Select qualified products that meet national standards and safety requirements.



Junction Boxes & Pull Boxes: Design, Materials, and

Explore the core design features, materials, protection ratings, and customization options for junction and pull boxes. See real E-abel case studies



Cautions and Requirements for Installation of

8. After installation, the residue in the distribution box should be cleaned up. When the distribution box is installed and constructed, some safety operation items



What is "push" and "pull" distribution?" - Part 23

This final blog on multi-echelon "push" and "pull" will summarize the uses and differences between the two techniques discussed throughout the

M12 push-pull locking system The new standard in automation

We provide consistent cabling with M12 push-pull fast-locking system directly on the machine or system: from the IP67 power supply, through field devices, right through to the connector and assembled cable.



The installation requirements for the distribution box

Learn how to install a distribution box safely and correctly. Covers wiring, placement, standards, and expert tips for a compliant setup.

Distribution Box Installation: Advanced



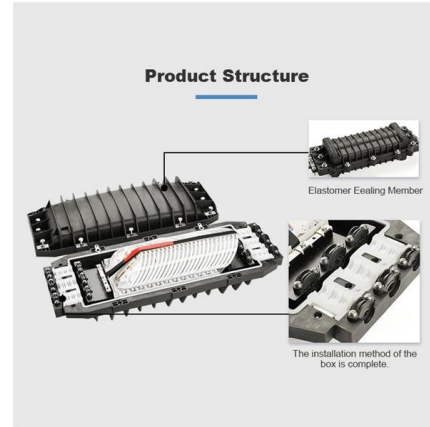
Techniques

Distribution Box Installation: Advanced Techniques. The installation of a distribution box is explored in detail, highlighting advanced techniques for achieving a professional and efficient setup.



Understanding Distribution Boxes: A Comprehensive Guide

A distribution box, also known as a power distribution box or electrical distribution box, is used to distribute electrical power safely to multiple



Installation process of distribution box

2. The wall mounted distribution box can be fixed on the wall with expansion bolts, but the dovetail bolts shall be embedded in the hollow brick or block wall or fixed



Small distribution box installation steps

The steps to install a small distribution box include selecting a suitable location, installing the base, placing the distribution box, connecting the



M12 distributor boxes with push-pull fast-locking and plug-in connector

The new M12 distributor boxes with push-pull fast-locking from Phoenix Contact set a new standard in automation technology. They feature consistent, tool-free, and intuitive installation.



How to install electrical distribution box quickly?

We have the latest invention patent, which makes the installation of the distribution box easier. Website: eabel Email: eabel@eabel WhatsApp: +861732

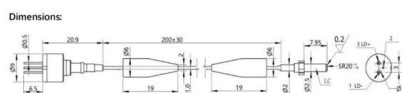
M12 push-pull distributor boxes , Phoenix Contact

The standardized M12 PUSH-PULL fast locking system enables quick and safe installation of the connectors with a simple latching function. This reduces



What hand and power tools are used to install a

Install distribution box systems with essential hand tools like screwdrivers and pliers, plus power tools such as drills and impact drivers for efficient setup.





Distribution Box Installation: A Complete Guide to Safe

The distribution box, often referred to as a breaker box, fuse box, or electrical panel, is a critical component of any electrical system. It acts as the central hub for

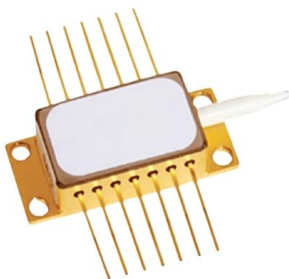


Distribution Box: Types and Functions , Axis-Electricals

A distribution box ensures that electrical supply is distributed in the building, also known as a distribution board, panel board, breaker panel, or electric panel.

Distribution Box Installation: A Complete Guide to Safe

In this comprehensive guide, we'll cover everything you need to know about distribution box installation, from the basics to the step-by-step installation



The installation requirements for the distribution box

First of all, you need to have a simple understanding of the definition of a distribution box, and make it clear which kind of distribution box you want to



Power Distribution Boxes Explained Simply

Learn what a power distribution box is, how it works, key components, types, and why it's vital for safe and efficient electrical systems.



Requirements And Specifications For Installation Of

The installation requirements and specifications of Distribution box involve many aspects, including site selection, fixing method, wiring specifications

Deprecated and retired Docker products and features

Explore deprecated and retired Docker features, products, and open source projects, including details on transitioned tools and archived initiatives.



Contact Us

For datasheets, pricing, or custom high-speed optical interconnect solutions, please visit:
<https://www.syropy.com.pl>