

# **Pump Room Electrical Distribution Box Specifications**





## Pump Room Electrical Distribution Box Specifications

---



### **Pump Room Solution Solution , Buildings , CHINT global**

CHINT provide one-stop Pump Room Solution solutions. From consulting services to engineering design and construction, to long-term project maintenance, CHINT is

### **Microsoft Word**

Yard Light SCADA/Dialer Spare Automatic electrical pump alternator Control relays shall be plug-and socket solid state with indicator light manufactured by Square D, Allen Bradley, or G.E. Surge



### **Packaged pump houses are an engineered-to-order solution, which**

Similar to traditional brick built pump houses, each main pump will require a dedicated power supply, and a supply for the other electrical equipment within the pump house.

### **EE-02-560 Electrical Design of Pumping Stations**

For an in-depth description of the various configurations, consult Electric Utility Engineering Reference Book--Distribution Systems by the Westinghouse Electric Corporation (1980).



### **Pump room section, plan, plumbing structure and**

Pump room section, plan, plumbing structure and electrical details that includes computation and schedule of loads with general notes and specifications, panel



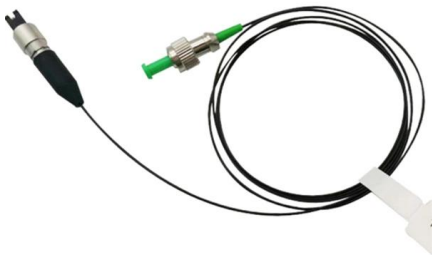
### **SRP , Arizona electric power and water utility company**

SRP , Arizona electric power and water utility company



### **Electrical Junction Boxes & Disconnect Panels**

Romtec Utilities can customize your junction box's design for simplex, duplex, triplex, and any other pump configuration required. Our standard offering includes water





## Distribution Box Guide: Types, Components & Solutions

Understand distribution boxes (DB boxes) in 5 minutes. Learn about types, components, functions, and uses. Find the perfect DB box for your needs.

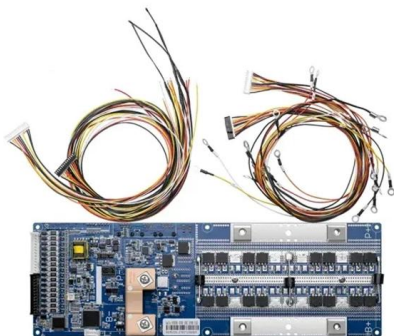


## Pump House Electrical Installation Specs , PDF , Scada

The document outlines the specifications and quantities for the electrical installation of a pump house, including components for the main distribution board, motor

## Reuters , Breaking International News & Views

Find latest news from every corner of the globe at Reuters , your online source for breaking international news coverage.



## BioPreferred

I buy for the federal government Federal law, the Federal Acquisition Regulation, and Presidential Executive Orders direct federal agencies and their contractors to



## Mechanical and Electrical Design of Pump Stations

This manual provides guidance and information to engineering, operations, maintenance, and to other individuals responsible for the mechanical and electrical design, operation, and maintenance of civil

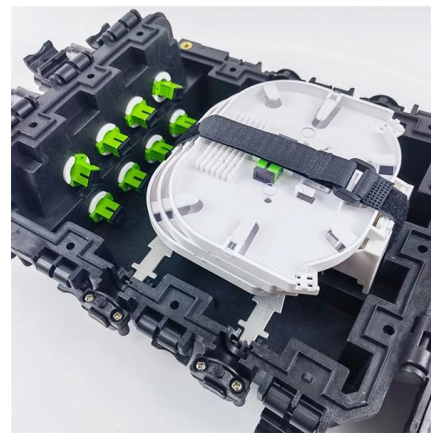


## Fire Pump Room Layout and Requirements Explained

A detailed guide explaining fire pump room layout and requirements, design standards, pump arrangement, electrical systems, ventilation, piping,

## TECHNICAL SPECIFICATION FOR LT DISTRIBUTION BOX

General Technical Particulars for LT Distribution Boxes : - The L.T. Distribution Boxes should be of the dimensions as per the drawing & details in the table furnished.



## Electrical Facilities for Pumping Stations

The document outlines the planning and design procedures for electrical facilities in pumping stations, emphasizing the importance of adhering to engineering



## M& E Room Dimensions and Specifications , PDF

The document outlines the mechanical and electrical services requirements for a building project. It lists 10 main service categories including electrical, telephone,



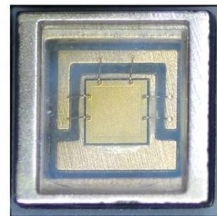
## GENERAL PRINCIPLES OF PUMPING STATION DESIGN AND LAYOUT

GENERAL PRINCIPLES OF PUMPING STATION DESIGN AND LAYOUT Purpose. This manual provides information and criteria pertinent to the design and layout of civil works flood control



## What is the Internal Structure of The Distribution Box

Learn about the internal structure of a distribution box, its components, functions, and key types. Understand its role in electrical systems



## Vol. 3-04 Pump Station and Forcemain Design Guidelines

Refer to the Design Guidelines for Electrical and Control Systems for Wastewater Pumping stations, in Appendix A, for details of electric power, panels and connections.



In the above context, the General Specification for Electrical Works (Internal) aims to lay down General guidelines to ensure safe, efficient, reliable, economical use of electricity.



### CEDE Course

Pumps which pump directly into transmission lines and distribution systems are sometimes called high lift pumps. Booster pumps may be located anywhere in the system to increase the pressure in the



### SUB-STATION LIGHTING

TECHNICAL SPECIFICATION OF SUB-STATION LIGHTING SCOPE : The specification covers design, manufacture, shop assembly and testing, supply, delivery, erection, and commissioning of



### Power Distribution Equipment

Each has its own unique standards and application guidelines, and one facet of good power system design is the knowledge of when to apply each type of equipment and the limitations of each type of



**Packaged pump houses are an engineered-to-order solution, which**

- o Electrical services (including pump room heater, fan extraction, audible alarm and motorised louvres)
- o Mains distribution board (for the connection of electrical services excluding the main fire pumps,



## Contact Us

---

For datasheets, pricing, or custom high-speed optical interconnect solutions, please visit:  
<https://www.syropy.com.pl>