

Prohibited near electrical distribution boxes





Overview

The booklet 'Electricity at work, safe working practices' provides general guidance on working near electricity.



Prohibited near electrical distribution boxes



What electrical panel locations are prohibited?

o What is the maximum gap allowed between the front of a recessed electric panel box and the wall surface surrounding it? o What are the

Electrical Panel Location Rules , Angi

The electrical panel delivers all your electricity needs, but it might ruin your aesthetic. Here are the electrical panel location rules so you can choose the



ELECTRICAL DISTRIBUTION BOARD

Product Description ELECTRICAL DISTRIBUTION BOARD UNAUTHORISED ENTRY PROHIBITED SIGN should be prominently displayed near electrical



Is It Safe to Live Near an Electrical Box? Unveiling the Truth

Living near an electrical box is a concern for many homeowners due to common misconceptions about its potential health risks. The truth is that electrical boxes, which include utility



Q& A: Is distance satisfactory to protect electrical

Is distance satisfactory to protect power distribution boxes (breaker boxes, disconnects ranging from anywhere from 50 volts to 440 volts) from

4 Safety Tips to Manage the Distribution Boards in Your Building

4 Safety Tips to Manage the Distribution Boards in Your Building A distribution board, often known as a panel or electric panel, is an important component of any commercial or residential



The installation requirements for the distribution box

A distribution box is the heart of any electrical system. It takes the incoming power and safely distributes it to different circuits throughout your



1926.960

Requirements for working without electrical protective equipment. When an employee performs work near exposed parts energized at more than 600 volts, but not more than 72.5 kilovolts, and is not



Requirements And Specifications For Installation Of

In flammable and explosive environments, explosion-proof distribution boxes should be selected and explosion-proof treatment should be carried out.

Cautions and Requirements for Installation of

Distribution box is a low-voltage distribution device which assembles switchgear, measuring instruments, protective appliances and auxiliary equipment in a closed



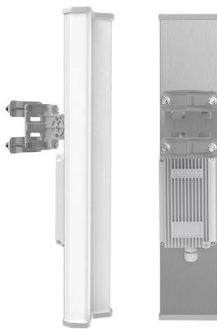
Installation Standards and Safety Precautions for Distribution Boxes

Wenzhou Tiaoxing Electric Technology Co. Ltd is one of leading manufacturer specializing in strip type fuse rail, fuse switch disconnector, pan assembly, distribution box, load



What Should You Not Touch in a Breaker Box? A Comprehensive Guide

The electric breaker box is a crucial component of any home's electrical system, serving as the control center for distributing electricity safely throughout your premises. While it may seem



Electrical Distribution Box Installation Mistakes

The Electrical Distribution Box is a very important part of the power system, improper installation will cause a lot of danger and loss. Here are some things that go



Electrical Panel Locations

Learn more about Electrical Panel Locations- A Guide for Placement - MEP Engineering - Master Electrician Services EVstudio .



Minimum Clearance Around Electrical Panels (Carrying

Minimum Clearance Around Electrical Panels (Carrying 600 Volts or Less) Insufficient clearance around electrical panels is one of the many electrical



Guidelines for Landscaping Around Electrical Equipment

Therefore, for your safety and that of our workers, there are city codes to limit landscaping around electrical equipment. Trees, shrubs, fences, large landscape rocks or other obstructions are not



Understanding Distribution Boxes: A Comprehensive Guide

A distribution box, also known as a power distribution box or electrical distribution box, is used to distribute electrical power safely to multiple

Required Bollards, CCCs in Wireways and More

Is the service equipment and distribution equipment for an industrial installation permitted to be installed on an elevated platform? The NEC specifically permits



Installation Standards and Safety Precautions for Distribution Boxes

Distribution boxes, switch boxes should be installed in dry, ventilated and room temperature places; shall not be installed in the role of serious damage to the gas, smoke, vapour,



Installation requirements for distribution boxes

Distribution boxes shall be made of non-combustible materials; open distribution boards may be installed in production places and offices with low electric shock risk; enclosed cabinets shall

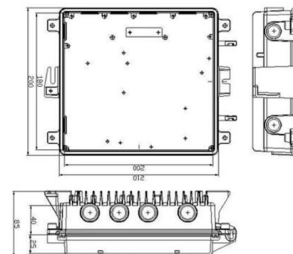


Safety Around Electrical Boxes and Infrastructure

Electrical boxes, power lines, and substations are important parts of our distribution infrastructure. Learn about them and how to report open or damaged electrical equipment.

Where Is the Distribution Box Located and How to Find It

Bottom Line Up Front: Your home's distribution box (electrical panel) is typically located in the basement, garage, utility room, or mounted outside near



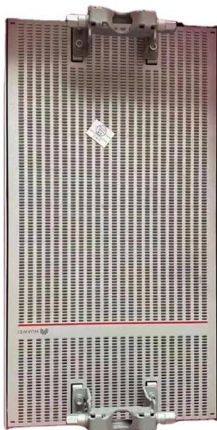
5 ISSUE 3.1

BS 7671 requires, in Section 421 (Protection against fire caused by electrical equipment), that equipment must not present a fire hazard to adjacent materials, and that manufacturers' instructions must be



The Electricity Safety, Quality and Continuity Regulations 2002

Every generator and distributor shall, for every substation which he owns or operates-- (a) enclose the substation where necessary to prevent, so far as is reasonably practicable, danger or



Electricity

Electricity - Systems in buildings What you need to do The law says you must take precautions against the risk of death or injury from electricity during construction work. Refurbishment work in buildings

Guidance on installing equipment within meter

The experts at NICEIC provide more detail on the installation of equipment in meter boxes. Electrical equipment associated with the consumer's

Product Catalog



OSHA Electrical Panel Clearance Requirements: Guide

Electrical panel clearance is a critical aspect of workplace safety, ensuring that electrical equipment is accessible and maintainable without risk of injury. Proper



Essential Guide: Electrical Panel Access Clearance

Access clearance requirements refer to the space that must be maintained around electrical panels to ensure safe Operation and Maintenance. This clearance is



Dangers and hazards of entry into live substations and enclosures

Prohibited area: An enclosed area, in which live conductors or live parts of electrical apparatus, working at high voltage are accessible, but situated in such a position that inadvertent contact is not possible

Contact Us

For datasheets, pricing, or custom high-speed optical interconnect solutions, please visit:
<https://www.syropy.com.pl>