

Processing of Long-Span Low-Voltage Cable Trays in Laos

Powerful manufacturers · 20+ years of experience · Support customization

For more product types, please contact customer service>>>

Customizable [Welcome to contact us](#)
[Send inquiry](#) [Chat now](#)





Processing of Long-Span Low-Voltage Cable Trays in Laos



Types of Cable Trays - Purpose, Advantages,

Cable tray is alternatives to wire ways and electrical conduits, which completely enclose cables. Study types of cable trays, purpose, advantages.

Cable Tray Technical Guide A practical guide to product selection and

Cable tray length is selected based on the load to be supported, the distance between the supports (also referred to as the span), and handling and installation constraints.



IEC Standard for Cable Tray: Complete Technical Guide

All trays must undergo salt spray tests and coating thickness tests to ensure the coatings meet the durability levels required under the IEC standard for

HDG Cable Trays in Laos Forest Pulp and Paper

Choosing the right cable management system is pivotal for infrastructure projects, especially in challenging climates like Laos. The " Laos Forest Pulp and Paper



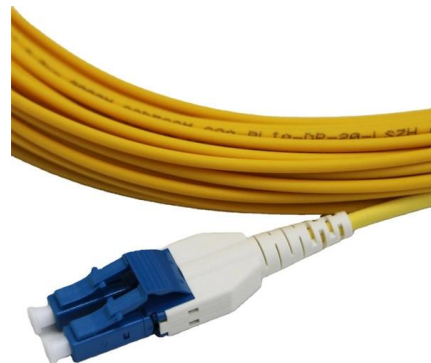
The Complete Guide to Cable Trays , Snake Tray

Learn about the benefits and applications of cable trays, and the specific advantages of using Snake Tray products.



2005

One industry standard that is strongly recommended is that only one cable tray splice be placed between support spans and, for long span trays, that they ideally be placed at 1/4-span.



GUIDE CABLE TRAYS TECHNICAL

NEMA VE 1-2017 Specifies requirements for metal cable trays and associated fittings designed for use in accordance with the rules of Canadian Electrical Code, Part I and the National Electrical Code®





Question: I am in the process of establishing guidelines for raised floors in communications facilities and plan to mandate that all cabling under raised floors

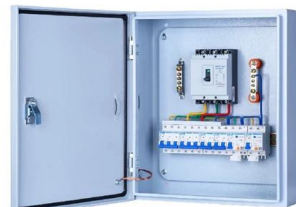


HDG Cable Trays in Laos Forest Pulp and Paper

Explore the robust HDG Cable Trays in Laos Forest Pulp and Paper Integration Project. Discover specifications, benefits, and crucial project details.

Long-Span Ladder Cable Tray System

The long-span cable tray adopts the structure of a strengthened side plate, which greatly increases the load capacity of the bridge. The product is suitable for the



Waterproof and dustproof, reliable and safe

The outer classic sink design allows the sealing ring of the cabinet and door to be seamlessly compressed without leaving a trace of gaps



Ladder Type Cable Tray

These trays also provide free air flow to prevent overheating, which could damage the cable. They mount overhead or under floors, and they're often used in whole



Best Practice Guide to Cable Ladder and Cable Tray Systems

This publication is intended as a practical guide for the proper and safe* installation of cable ladder systems, cable tray systems, channel support systems and associated supports.



Annex I

By convention, to avoid any misunderstanding and to simplify the cable tray design and installation, the bending radius for all cable trays and conduits should be at least 300 mm for Low Voltage, Sensitive

Laos launches phased project to transition to low-voltage underground

The Government of Laos has begun transitioning its low-voltage electricity, internet, and communication cables underground in an effort to reduce fire hazards, improve public safety, and



Wire Mesh Cable Trays Technical Information Detailed,

Wire Mesh Cable Tray Detailed Information: a. A job site, field adaptable support system primarily for low voltage telecommunication and fiber optic cables. These



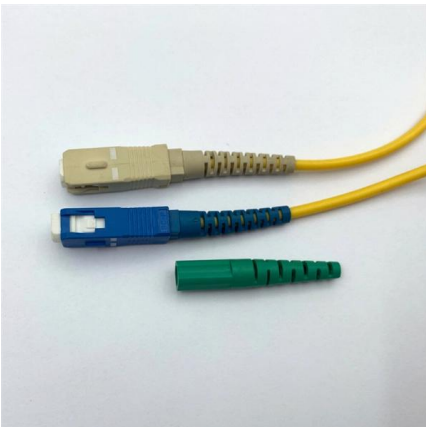
Cable tray manual

One industry standard that is strongly recommended is that only one cable tray splice be placed between support spans and, for long span trays, that they ideally be placed at 1/4-span.

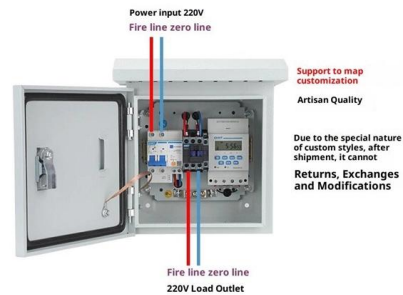


Long Span Cable Tray

Long Span Cable Tray The long span cable tray is suitable for long support spans and high cable load capacity, and conforms to the load/span design specified in IEC 61537. The long



Product Wiring Diagram



Cable Tray - KMC Engineering Company

Finishing of Cable Tray: Hot Dip Galvanizing: We provide our clients with hot-dip galvanizing following process & testing according to IS-2629 & IS-4759 Since,



Long Span Steel Straight Sections , Ladder Trays , Cable Tray and

This product line is designed for applications with extremely heavy loads and long spans. Tray systems are available in lengths of 30, 40 and 50 feet to accommodate 30-50 foot support spans.



A Guide to Installing and Supporting Electrical Cable Trays

A professional guide to installing electrical cable tray systems per NEC Article 392. Covers support, securing cables, and fill calculations.



B-Line series Cable Tray Design Considerations

As an industry leader in cable tray, Eaton offers one of the widest ranges of cable management solutions available in the market today with its B-Line series portfolio. With unmatched quality and service, we

Low Voltage Cable Tray

Low voltage cable trays originally come from aluminum, plastic, and galvanized steel materials. All cable trays that were originally made from these materials do have



CABLE TRAY SYSTEMS GUIDE

Some applications may require the cable tray to support the weight of a single, dead object in addition to the cable loads. Specifications typically require this to be applied at the midpoint of the span between



Part 3: Using LAOS to Quantify Long Chain Branching

FT-Rheology via Large Amplitude Oscillatory Shear (LAOS) is recognized as a very sensitive test method for detecting long chain branching



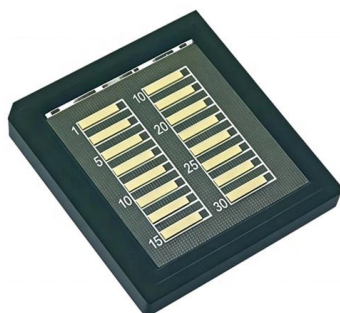
GUIA BASOR G02 IMPRESA_ENERO22_OK_BAJA

BASOR ELECTRIC has prepared this Technical Technical Guide to facilitate the process of selection and design, and offer maximum information possible on all these aspects, thus maintaining the line of



Guide to cable support systems

The mesh cable trays are suitable for the installation of power cables and cables in various areas of application. The grid spacings mean that cables can be inserted and run out in various directions.



Ladder Type Cable Tray

This Ladder Cable Tray is designed for laying larger diameter cables, making it ideal for both high and low-voltage power cable installations. Key Features



LEGRAND CABLE TRAYS TECHNICAL GUIDE

Not all cable trays are equivalent. The mechanical and electrical characteristics, tests, certifications, overall quality management, recommendations mentioned in this technical guide only apply to our



Cable Tray Technical Guide A practical guide to product selection and

A practical guide to product selection and installation This guide for engineers and installers has been developed by ABB as a practical reference regarding cable tray characteristics, installation, and

ITER Cabling Handbook

Cable installation: dealing with the design and installation of cables in the cable trays or conduits. Segregation: dealing with the distribution of the different cable types in the cable trays and the



Contact Us

For datasheets, pricing, or custom high-speed optical interconnect solutions, please visit:
<https://www.syropy.com.pl>