

Principles of Chad Core Switches





Principles of Chad Core Switches



Understanding Core Switch: What It Is and How to

In the realm of system networking, three key types of switches are frequently mentioned: access switches, aggregation switches, and core switches.

What Is a Core Switch in a Network?

Define the core switch--the central, high-speed backbone required for aggregating and routing massive volumes of enterprise network traffic.



From standard 1U to 6U sizes to fully customized Non-standard enclosures.

ITEE::Future Data Centers Core Switches Design Challenges

Compared with the telecommunication system, in this architecture, the ToR switches are used as an optical network units and the Aggregate switch is used as optical link terminator.

Core Switch

The ToR switches are electronic packet switches while the core switches are a combination of optical and electronic switches. The electronic switches are used for all to all communication among pods,



What Is a Core Switch?

A core switch is the backbone of a large-scale network, designed to handle massive volumes of traffic with ultra-low latency and maximum reliability. Sitting at the top of the hierarchical model, core



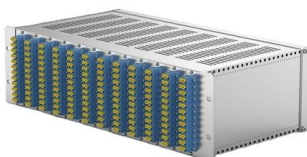
Phase-Shifted Full-Bridge Converter Fundamentals

The phase-shifted full-bridge converter (PSFB) is common in high-performance power supplies with fast transient response, high power density and high converter efficiency. This topic reviews PSFB



Native AC Solution: Core Switches Function as the Gateway for Wired

In addition, core switches are configured with the native AC function to manage APs and transmit wireless service traffic on the entire network, implementing wired and wireless convergence.





Core Switch vs Access Switch , Definitions and Key Differences

This article focuses on the hierarchical internetworking and core switch vs access switch differences. We also discussed the core switches type and built a basic understanding of how a



Core Switch vs. Distribution Switch vs. Access Switch

Comprehensive guide to Core, Distribution, and Access Switches. Roles in the network and important parameters explained.

Google Translate

Google's service, offered free of charge, instantly translates words, phrases, and web pages between English and over 100 other languages.



Core, Distribution, and Access Layer Explained with

Core switches typically have redundant power supplies, redundant supervisors, and multiple connection paths. They're built to never go down,

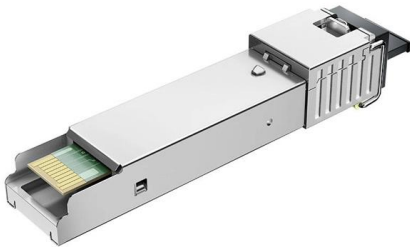


All switches, however, turn the system off and on in much the same manner. The ignition switch is different in at least one respect from all other types of switches: when the ignition switch is in the off



Core, Distribution, and Access Layer Explained with

Small business implementations: Collapsed core
Small to medium businesses don't need the same scale, but they can still benefit from the



Cisco Core vs Access Switches: Key Differences

Compare Cisco core switches and access switches. Learn key differences for network design and performance.



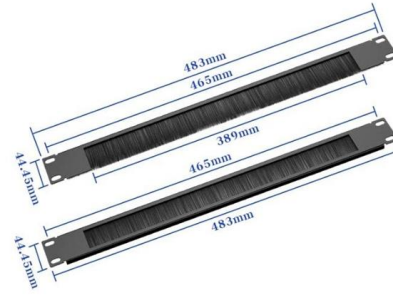
Data Center Network Switch Design

In a large network, we will have different types of switches involved and they play different roles when it comes to the functions. So, we have general guidelines and separate them into



Network Switches and Zero Trust Architecture

Network switches, a fundamental component of network infrastructure, play a critical role in implementing Zero Trust principles. This blog explores how network switches can be integrated

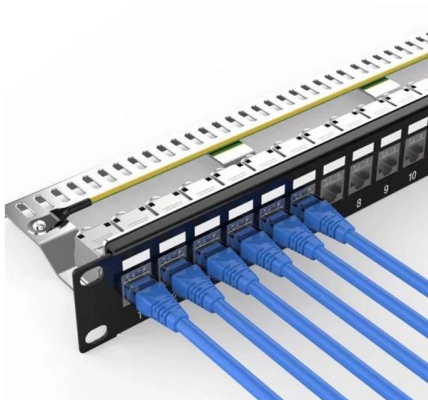


Understanding the Core Switch: Key Differences and Uses

Explore the core switch's role as the backbone of your network. Discover key differences, uses, and insights into layer 3 core switch technology.

FS Community

Hier sollte eine Beschreibung angezeigt werden, diese Seite lässt dies jedoch nicht zu.



What Is a Core Switch in Networking?

Unlike access switches, which connect directly to end-user devices, the core switch focuses on aggregating and routing traffic between other

Core, Aggregation, or Access Switches?



Choose the

Discover the crucial differences between core, aggregation, and access switches. Find out which type can best transform your network's



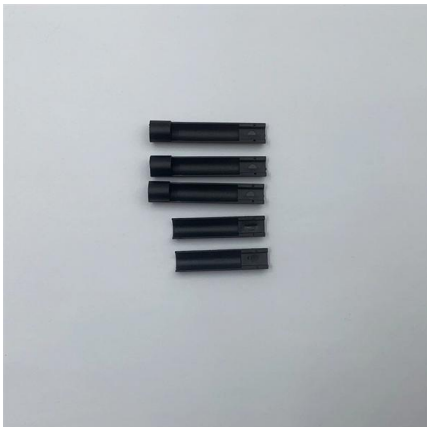
Features and Applications of Core Switches

Core Switches also provide intelligent routing, QoS assurance, security, scalability, and manageability. A well-matched Core Switch configuration is a strong support for building powerful,



Understanding Core Switch: What It Is and How to

When selecting a core switch, it's essential to focus on several crucial aspects that can significantly impact the performance and reliability of your



Advanced Topologies 4 Magnetic Switching

References Magnetic Switch Principles A magnetic switch is a device, usually constructed as a winding around a magnetic core, that uses the non-linear properties of magnetic materials to achieve a large



Core Switches and Normal Switches: A Practical

In modern network infrastructure, switches play a pivotal role in connecting devices and facilitating data transfer. However, not all switches are

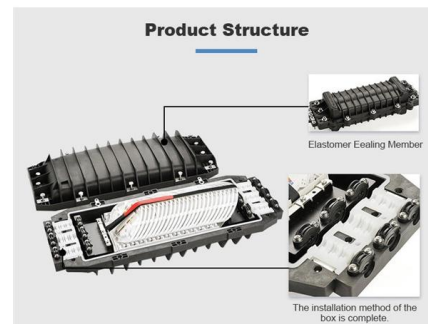


What Is a Core Switch in Networking?

What Is a Core Switch in Networking? Understanding the Backbone of Your Network A core switch in networking serves as the high-capacity

Network Switch Components and Technical Analysis

Depending on device configurations and coverage requirements, they can be further divided into Layer 2 and Layer 3 switches: Layer 2 switches are used for internal company data flow, while Layer 3



Network Switch Components and Technical Analysis

A Network Switch is one of the essential devices for building modern networks, capable of enhancing network performance and reliability, providing stable and efficient data transmission services for



About Network Design Principles

Why Design Principles and Patterns? Following key design principles and using familiar design patterns produces more reliable networks. Common patterns are



Core Switches: Key to Reliable, Scalable Enterprise

Discover the essential role of core switches in modern networks. Explore our comprehensive guide to enhance your network's performance and

Core Switches: The Backbone of High-Speed Data Networks

Core switches form the backbone of large-scale networks, handling massive amounts of data traffic with high speed and reliability. Whether in a data center, enterprise, or ISP environment, core switches



Contact Us

For datasheets, pricing, or custom high-speed optical interconnect solutions, please visit:
<https://www.syropy.com.pl>