

# **Principle of Flashlight Dimming Switch Module**





## Overview

---

The working principle of a dimmer switch is to control the amount of current flowing through a circuit thereby controlling the brightness. It controls the current by using a small motor to turn an internal resistance up and down quickly, between live and neutral wires. Many devices such as flashlights, have mechanical switches for selectively connecting an input contact, such as a battery, to an output contact to establish a conductive path and provide power to an output device. Dimmer switch definition is; a simple electronic device that is used to control the intensity range of lights is known as a dimmer switch like LED, CFL & Halogen. The application note gives step-by-step guidelines for creating an LED flashlight mode controller using Asynchronous State Machine design using a SLG46537V device.



## Principle of Flashlight Dimming Switch Module

---



### How Dimmer Switches Work: Types, Technology

Explore the evolution of dimmer switches--from resistive to TRIAC and smart dimmers. Learn how phase-cutting works, why LEDs flicker, and how to

### How Dimmer Switches Really Work

How Dimmer Switches Really Work The warm glow of a perfectly lit room - it's a feeling that's hard to beat. But have you ever stopped to think about



### How Dimmer Switches Work

A regular light switch takes care of off and on. A dimmer switch handles off, on and everything in between. Find out what this clever switch does with electrical current.

### US8573798B2

Embodiments herein provide a switch module for a flashlight with a single input contact and multiple output contacts. The switch module may include multiple mechanical actuators, each



### Flashlight Parts and Their Functions Diagram

Explore the detailed diagram of flashlight parts, their functions, and how they fit together to create a fully operational flashlight. Learn about key components and



### How Does A Dimmer Switch Work: Lighting Explained

Explore How Does A Dimmer Switch Work: Lighting Explained Lighting plays a crucial role in shaping the ambiance of any space, and dimmer switches have



Rear of the optical fiber distribution box



### Dimmer Switch : Working, Types, Circuit & Its Applications

PDF file

### AN-1087 LED Flashlight Mode Controller using Asynchronous State

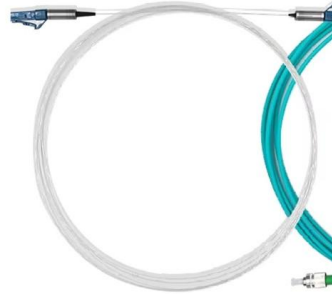
The application note gives step-by-step guidelines for creating an LED flashlight mode controller using Asynchronous State Machine



design using a SLG46537V device.

## Introduction to Dimmer Switches, Working, Features,

What Does a Dimmer Switch Do? Dimmer switches increase or reduce the brightness of the light bulb. They are normally used at home offices to



## Basic principles of the dimmer function and network capability

This application example describes the basic principles of the dimming of light, the important aspects concerning the individual types of dimmer (leading edge phase control, trailing edge phase control,

## How Do LED Dimmer Switches Work? Complete Guide

Learn how LED dimmer switches work, the difference between leading and trailing edge dimmers, and how to choose the right one for smooth, flicker-free lighting



## 0-10V Dimming: A Technical Guide

0-10V Dimming Operation Within a lighting fixture, the 0-10V dimming control of the fixture is a result of the LED driver and its 0-10V control leads connected to an external 0-10V dimmer. The dimmer can



### **Design and Operation of a Flashlight - Andre Bisessar - Digital Portfolio**

When the switch is pressed, it connects metal parts inside the flashlight, which allows electricity to flow. When the switch is released, the connection is broken and electricity stops flowing.



### **Flashlight Parts Diagram and Function Breakdown**

Explore the key components of a flashlight with a detailed diagram. Understand the structure and function of each part for better usage and maintenance.



### **The Principle of Dimmer and the Dimming Method of**

What is PWM dimming? The basic principle of pulse width modulation (PWM): The control method is to control the on and off of the switching devices of





## Shedding Light: A Visual Guide to How Flashlights Work

An informative diagram illustrating the various components and functions of a flashlight, including the bulb, battery, switch, and reflector.

## The Anatomy of a Flashlight: A Detailed Diagram and

Learn about the structure and components of a flashlight through a detailed diagram. Explore the various parts and their functions to understand how a flashlight works



## Illuminate Your Path: How Flashlights Work

Discover the magic behind how basic flashlights work. Explore the synergy of components like the battery and bulb for efficient illumination.

## How Does A Light Dimmer Switch Work? [Full Guide]

Let's take a closer look at how a dimmer switch works. Wondering how a dimmer switch works? A light dimmer switch is a device that helps to control the level of



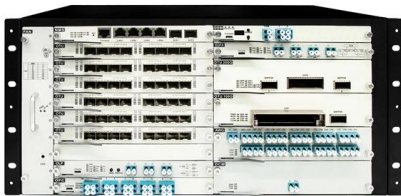


## Dimming Techniques for Switched-Mode LED Drivers

Two popular methods for dimming LEDs in switched-mode driver circuits exist: Pulse-Width Modulation (PWM) dimming and analog dimming. Both methods control the time-averaged current through the

## Building a DIY flashlight: a step-by-step guide to the

In summary, a flashlight circuit diagram shows how the power source, switch, wires, and LED bulb are interconnected to create a functioning flashlight. By



## Understanding How a Flashlight Works

Learn how a flashlight works with this informative diagram. Understand the different parts and functions of a flashlight to help you troubleshoot and repair.

## Dimmable Lighting: How Dimmer Switches Work with LEDs

Standard dimmer switches were not designed for this conversion, which can cause flickering, buzzing, or even damage to the LED driver. To solve





## AC Dimmer Modules with Arduino and ESP

Learn how to control the brightness of AC lights using an AC dimmer module and Arduino. This comprehensive guide covers module features, working

## Dimmers, LED dimmer & Lighting Controls

What is a Dimmer? A modern dimmer is an electronic device designed to regulate light output of incandescent and halogen lamps; and fluorescent lamps in fixtures



## Flashlight Circuits and Energy Management

In this section, we'll delve into the science and engineering behind these dimming techniques, helping you understand how they affect your flashlight's performance.

## How Do Flashlights Work , 7 Step Guidelines (2026)

In this introduction to how do flashlights work, we will uncover the basic components of a flashlight and explain the fundamental principles that





## **Flashlight Circuit: How to build a DIY Flashlight Circuit**

How Flashlight Circuits Work At its most basic, a flashlight circuit consists of three main components: Power source (battery) Switch Light emitter



## **Contact Us**

---

For datasheets, pricing, or custom high-speed optical interconnect solutions, please visit:  
<https://www.syropy.com.pl>