

Price of seismic-resistant cable tray installation



Strengthen door locks

More durable and aesthetically pleasing



Grounding screw

More aesthetically pleasing and safer



Removable hinges

Make operation more convenient



Sealing strip

Dustproof and waterproof





Price of seismic-resistant cable tray installation



Vogtle Electric Generating Plant (VEGP) Units 3 and 4 Updated

Cable Trays and Cable Tray Supports This appendix provides the design criteria for seismic Category I cable trays and their supports. Seismic Category II cable trays and their supports are also designed

Performance-Based Earthquake Engineering Methodology for Seismic

Journal Pre-proof Performance-Based Earthquake Engineering Methodology for Seismic Analysis of Nuclear Cable Tray System

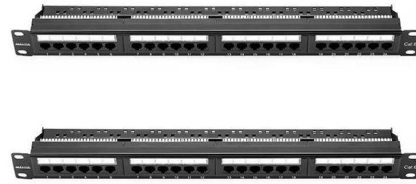


Evaluation of cable tray and conduit systems using the seismic

A method is developed for utilizing this data in defensible, simple seismic qualification criteria and configuration controls. Qualitative comparisons are used to demonstrate the applicability

Seismic fragility analysis of suspended cable trays in civil buildings

This study aims to understand the seismic fragility of typical suspended cable trays in civil buildings through full-scale shaking table tests and numerical simulation. Based on the shaking table



Cable Trays Seismic Design: Protecting Power in Quake

Learn how I approach Cable Trays Seismic Design to protect power and data in earthquake-prone areas. Understand key principles, methods, and

Circuit Integrity of Cable Tray Wiring Systems During Natural Disasters

For those installations, Seismic Restrained Cable Tray Wiring Systems may be obtained by providing the proper multidirectional bracing for the cable tray supports.



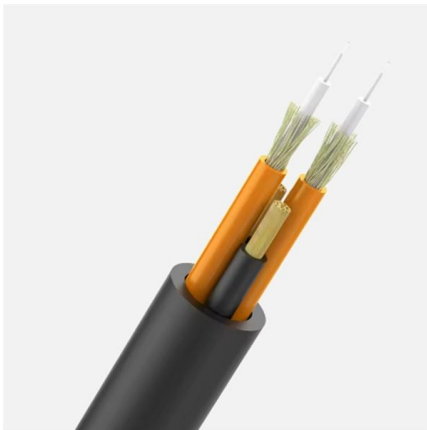
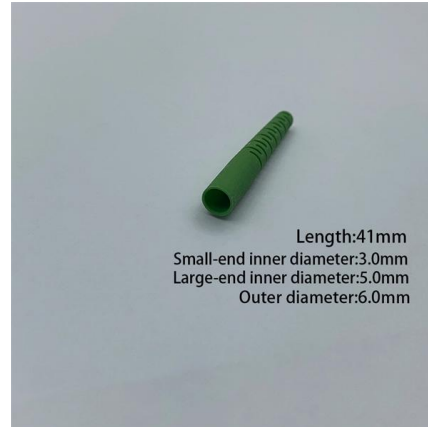
Seismic analysis and design of electrical cable trays and support

The design aspects of electrical cable trays and support systems are discussed from the seismic and structural standpoint. The effects of the inherent flexibility of commonly used cable trays



Rev 7 to Procedure SAG.CP3, "Seismic Design Criteria for Cable Tray

A cable tray hanger is classified as a seismic Category I structure, and therefore, it shall be adequately designed for the effect of the postulated seismic event combined with other applicable and'



Seismic Bracing Ensures Stability and Safety of Cable

Seismic Bracing - Enhancing System Stability and Seismic Resistance Seismic bracing, typically made of high-strength metal, is key component specifically

The shake on seismic bracing

For cables or anything else that runs in a line, the seismic force acts in two directions: transverse (perpendicular) and longitudinal (parallel) to the run. Almost



Seismic cable bracing solution brochure

Along with reliable, quality products that deliver lower total installed cost, Eaton provides pre-engineered details for lateral and longitudinal bracing of cable tray, single hung systems, and more.



Seismic and cable tray solution flyer

Eaton's B-Line series cable tray with TOLCO seismic bracing is the recommended total solution for your project. Our cable tray, bolted framing, and seismic bracing are approved as one system through



Seismic and cable tray solution flyer

Our team of experts can help you select the best cable tray series for your application, as well as designing your seismic bracing layout to ensure it meets applicable building codes and standards.

Seismic Bracing Kit , Seismic Bracing , Wire and Cable Hangers , Wire

Connect cables directly to 3/8" threaded rod in trapeze installations for seismic bracing. Use 2 EZ BN 3/8 to attach cables to FAS PCH for sway bracing. Predrilled tabs allow attachment directly to concrete



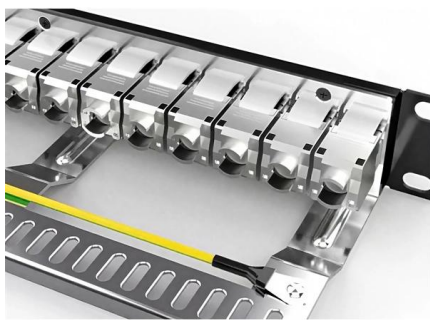
Reliable Solutions for Efficient galvanized cable tray price list

Discover high-quality galvanized cable tray price list designed for efficient cable management, offering durability and easy installation. Ideal for enhancing organizational systems in commercial settings.



Cable Tray Installation Cost per Meter - Price Estimator

On average, the cable tray installation cost per meter increases by approximately \$10 to \$30 per meter depending on the complexity of the



Cable Tray Installation Cost per Meter - Price Estimator

Understanding the cable tray installation cost per meter is essential for effective budget planning. Costs vary based on tray material (steel, aluminum,

Wireways and Cable Trays Price Guide, Industrial Installation Costs

When calculating how much do wireways and cable trays cost to install, factor these variables to avoid budget overruns and ensure accurate financial planning for your electrical



2. Imported design is convenient for expansion.

The design of two inlets saves space and allows for rear line entry.



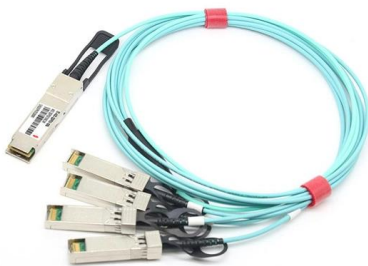
Performance-based optimum seismic design of cable tray system

The seismic performance levels of cable tray systems are presented according to current seismic design codes. A performance-based optimum seismic design procedure for cable tray



Stainless Steel Cable Tray Prices

Types of Stainless Steel Cable Trays & Price Comparison Stainless steel cable trays are essential components in modern electrical and industrial installations, providing durable, corrosion-resistant



Understanding the Seismic Resistance of Cable Trays

Another factor to consider when evaluating the need for seismic braces is the cost. Seismic braces, while offering critical protection, add to the overall

Cable Tray Installation

Cable tray installation is a great way to clean up network cabling routes. Organize and and future-proof your networks with a CORE cable tray installation.



Cable Tray Checklist for High-Seismicity Projects

The seismic performance of a cable tray system depends just as much on the building connection as on the tray itself. Every hanger, trapeze, beam clamp, concrete insert, and post



Seismic MEP Solutions , Eaton

When compared to other cable bracing methods, the B-Line series seismic bracing cable kit is up to 50% faster to install. Chlorinated polyvinyl chloride pipe (CPVC) is a type of durable, long-lasting pipe

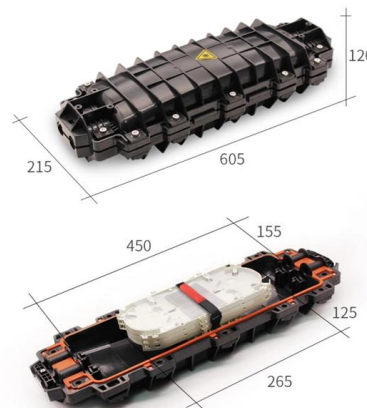


SEISMIC BRACING OF A DISTRIBUTED CABLE TRAY SYSTEM

Above these cabinets, are cable trays that provide power and communications cabling to the cabinets. Since the facilities were located in a area of high seismicity, the cable tray system was required to be

Performance-based optimum seismic design of cable tray system

The design of cable tray systems according to the proposed design method can derive the cost-efficient solution and meet the expected seismic performance objectives for cable tray systems



KINETICS(TM) Seismic & Wind Design Manual Section

D9.0 - Electrical Distribution Systems Title
Seismic Forces Acting On Cable Trays & Conduit
Basic Primer for the restraint of Cable Trays & Conduit
Pros and Cons of Struts versus Cables



Seismic Supports

Seismic Supports Cable trays are systems used for the safe transportation and protection of electrical cables, designed to fit the pathways within buildings and

More products

OUTDOOR CABINET

FTTX SOLUTION

DATA CENTER

Click to See Click to See Click to See Click to See
Click to See Click to See Click to See Click to See
Click to See Click to See Click to See Click to See

Contact Us

For datasheets, pricing, or custom high-speed optical interconnect solutions, please visit:
<https://www.syropy.com.pl>