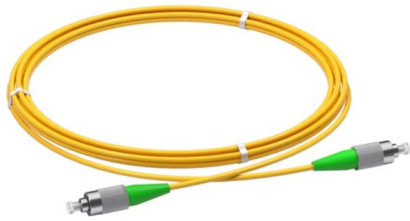


Price of Low-Loss Reconfigurable Optical Add- Drop Multiplexers for Field Operations in Thailand





Price of Low-Loss Reconfigurable Optical Add-Drop Multiplexers for



Reconfigurable Optical Add-Drop Multiplexer Module

The reconfigurable optical add-drop multiplexer (ROADM) module market consists of sales of fixed ROADM modules, reconfigurable ROADM modules, and hybrid

Compact four-channel reconfigurable optical add-drop multiplexer

We designed and fabricated a four-channel reconfigurable optical add-drop multiplexer based on silicon photonic wire waveguide, which is controlled through the thermo-optic effect. The



Add-drop Multiplexers - Buying Guide & Supplier List , RP Photonics

This add-drop multiplexers buying guide provides technical background, comparison of major types, selection criteria, and an overview of suppliers.

Reconfigurable Optical Add Drop Multiplexer Market Size

The Reconfigurable Optical Add Drop Multiplexer (ROADM) Market was valued at USD 4.2 Billion in 2024 and is poised to grow from USD 4.



Cost evaluation of reconfigurable optical Add/Drop

The comparison of ten different architectures is performed based on three objectives: the characteristics provided by ROADM architectures, the



Design and evaluation of a reconfigurable optical add

Reconfigurable optical add-drop multiplexers (ROADMs) for SDM-based networks must have high scalability in terms of port count.



Impact of the reconfigurable optical add-drop multiplexer architecture

When the PLIs are neglected, the common-band architecture presents the lowest cost-per-bit compared to the remaining MB architectures, since only lower cost C-band components are used.





Optimal placement of reconfigurable optical add/drop multiplexers with

With technological and manufacturing advances, and increased economies of scale, today the use of Reconfigurable Optical Add/Drop Multiplexers (ROADMs) has become economical.



Recommendation ITU-T G.672 (05/2025)

This document provides a comprehensive framework for the classification, characteristics, and operational parameters of Multi-Degree Reconfigurable Optical Add/Drop Multiplexers (MD)

Compact 8-channel thermally reconfigurable optical add/drop

Abstract A compact thermally reconfigurable optical add/drop multiplexer (ROADM) is realized with 500 nm × 220 nm silicon-on-insulator (SOI) strip waveguides.



Reconfigurable Optical Add Drop Multiplexer Market 2025

This market research report provides a comprehensive analysis of the global and regional Reconfigurable Optical Add Drop Multiplexer (ROADM) markets, covering the forecast period



Optical Add-Drop Multiplexers (OADM)

Discover the importance of Optical Add-Drop Multiplexers (OADM) in optical communication networks. Learn how OADMs enable flexible signal routing



Multi-dimensional reconfigurable optical add/drop multiplexer for WDM

Among these devices, the reconfigurable optical add/drop multiplexer (ROADM) stands out for its ability to load and unload data in bus waveguides, playing a crucial role in the operation of WDM

Checking your browser

Checking your browser before accessing pubmed.ncbi.nlm.nih.gov



FS Community

Hier sollte eine Beschreibung angezeigt werden, diese Seite lässt dies jedoch nicht zu.



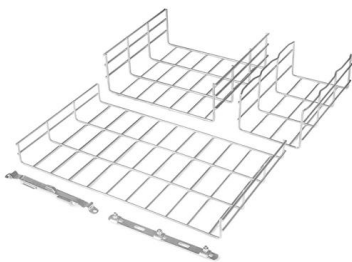
Introduction to Reconfigurable Optical Add-Drop Multiplexers (ROADMs)

Discover the versatility of Reconfigurable Optical Add-Drop Multiplexers (ROADMs) in modern communication networks. Explore how ROADMs enable flexible routing of optical signals,



Reconfigurable Optical Add and Drop Multiplexers A Review

Reconfigurable optical add-drop filters in future intelligent and software controllable wavelength division multiplexing networks should support hitless wavelength switching and gridless



Optoplex 3 Port Tunable Filter

Optoplex's Reconfigurable Optical Add/Drop Multiplexer (ROADM) module, also known as Tunable Optical Add/Drop Multiplexer (TOADM), is based on a



Implementation of an Elastic Reconfigurable Optical Add/Drop

We designed a Reconfigurable Optical Add/Drop Multiplexer (ROADM) based on a sub carrier add/drop node in an optical communication system that is suitable for all kinds of optical multiplexing signals.

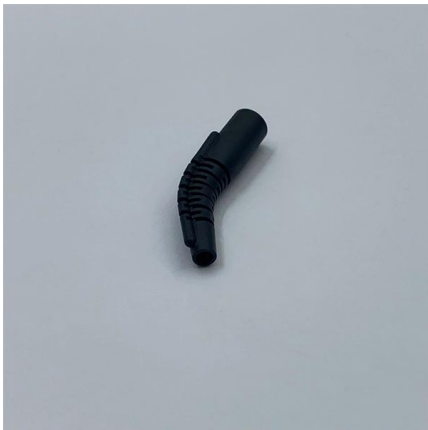


Dynamically Reconfigurable Optical Add-



Drop Multiplexer/ Filter

Based on a proprietary micro-integrated-optical breakthrough, Agiltron's ROADMs offer unprecedented dynamic channel reconfiguration performance of high low loss, high reliability, ultra compactness,



Optimizing performance in elastic optical networks using advanced

Network operators diversify service offerings and enhance network efficiency by leveraging bandwidth-variable transceivers and colorless flexible-grid reconfigurable optical add-drop multiplexers

US20210250116A1

An approach for realizing low-power, high-port-count optical switching systems, such as OXCs, WXC's, and ROADMs is presented. Optical switching systems in accordance with the present disclosure



Cost evaluation of reconfigurable optical Add/Drop multiplexers

The comparison of ten different architectures is performed based on three objectives: the characteristics provided by ROADM architectures, the optical power loss and the implementation price.



Add-drop Multiplexers - Buying Guide & Suppliers

This add-drop multiplexers buying guide provides technical background, comparison of major types, selection criteria, and an overview of suppliers.

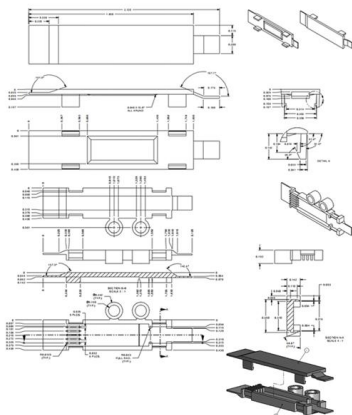


Reconfigurable optical add/drop multiplexer

A reconfigurable optical add/drop multiplexer (ROADM) is a node device in an optical fiber communications network. A basic function of the reconfigurable optical add/drop multiplexer is to

Wavelength-Routing Capability of Reconfigurable

The value of colorless, directionless, and contentionless (CDC-)ROADM (reconfigurable optical add/drop multiplexer) nodes is strongly



Design and evaluation of a reconfigurable optical add-drop multiplexer

Space-division multiplexing (SDM) is expected to increase the capacity of photonic networks. Reconfigurable optical add-drop multiplexers (ROADMs) for SDM-based networks must



reconfigurable optical add/drop multiplexer

A reconfigurable optical add-drop multiplexer (ROADM) is a key component in wavelength-division multiplexing (WDM) optical communication networks. It allows for flexible and dynamic routing of



Optimizing performance in elastic optical networks using advanced

Scalable and Economically Efficient Design for Elastic optical networks. Network operators diversify service offerings and enhance network efficiency by leveraging bandwidth-variable

Reconfigurable optical add-drop multiplexers for hybrid mode

A silicon-based on-chip reconfigurable optical add-drop multiplexer (ROADM) is presented for hybrid wavelength-division-multiplexing-mode-division-multiplexing systems.



Contact Us

For datasheets, pricing, or custom high-speed optical interconnect solutions, please visit:
<https://www.syropy.com.pl>