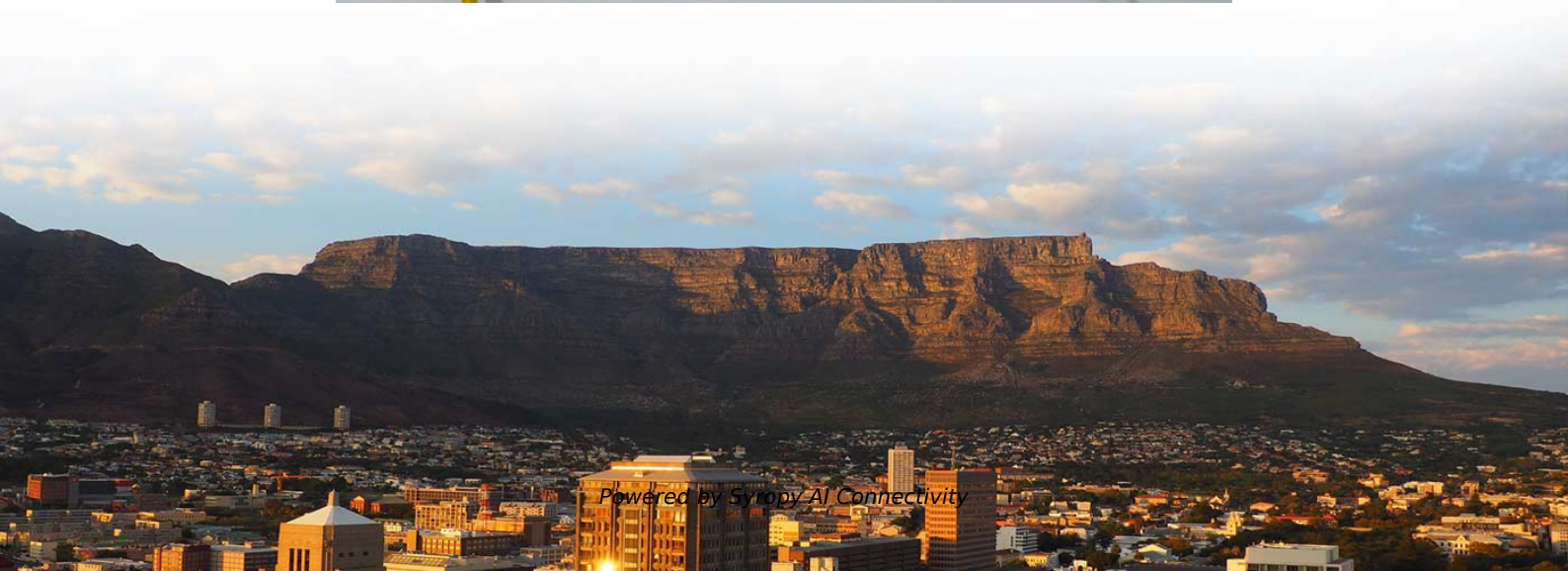
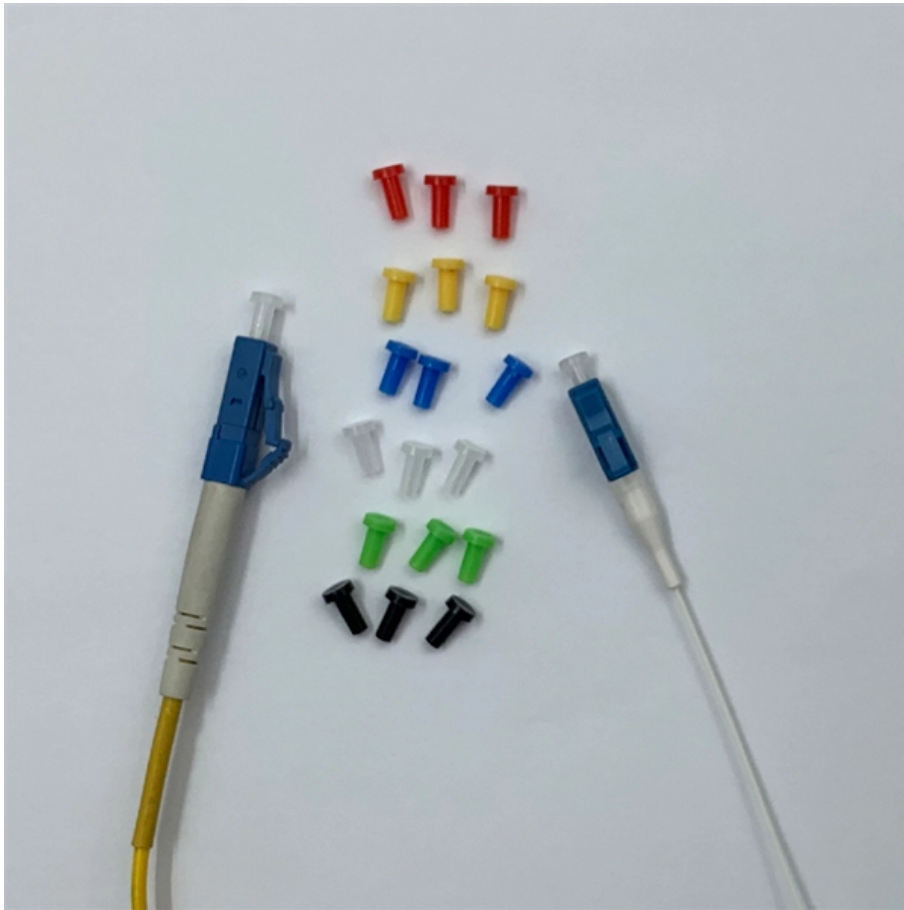


Power ports of industrial switches





Power ports of industrial switches



How to pick the right Industrial Ethernet Switch for

Industrial Ethernet switches are comprised of managed and unmanaged switches with Gigabit, PoE, and various industry certifications. Featured industrial-grade

Power over Ethernet (PoE) Industrial Ethernet Switches

PoE Industrial Ethernet Switches Compact DIN Rail PoE Switches In addition to transmitting network data, a PoE Switch has a built-in Power over Ethernet



Industrial Switches for Modern Manufacturing and

Discover how industrial switches support modern manufacturing and automation with durability, flexibility, quality of service, and robust cybersecurity.

Types of Industrial Grade Network Switches

An L3 industrial PoE switch combines the routing functionality of a Layer-3 industrial switch with built-in PoE capability on data ports. In effect,



Industrial Power over Ethernet Products

These switches used in field level or small networks where offers a wide range of Power over Ethernet a variety of port counts, fiber connectivity, for industrial PoE applications.



Industrielle PoE Switche , Power over Ethernet (Strom über Netzwerk

PoE switches built for industrial environments are specifically designed to be capable of withstanding extreme temperatures, humidity and electrical interference. This makes them ideal for harsh



What Are Industrial Ethernet Switches and How Do They Enhance

Industrial Ethernet switches are ruggedized network devices designed to provide reliable, secure, and high-performance Ethernet connectivity in harsh industrial environments. They enable



The Ultimate Guide To Picking An Industrial Ethernet

Discover the essential factors for choosing an industrial Ethernet switch. Our comprehensive guide offers expert insights and tips.

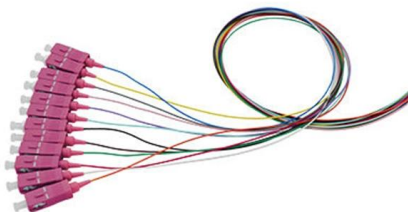
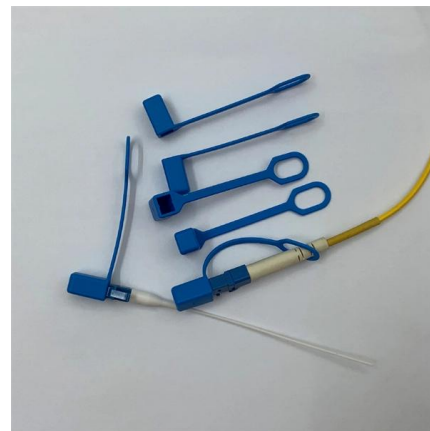


Power Supply Requirements for Industrial Switches

Industrial-grade switches serve as the backbone of modern industrial networks, ensuring reliable connectivity and optimal performance across various

Network Switches , PoE, PoE+ & PoE++ for Enterprise

PoE, PoE+, and PoE++ network switches for enterprise and hardened applications. Managed and unmanaged options in 4, 8, 16, 24, and 48-port configurations.



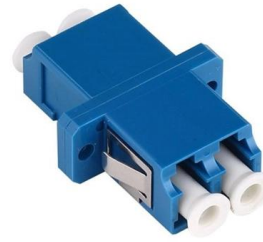
Industrial Switch Power Supply Guide: AC vs DC, Redundancy & How

Need help choosing the right power supply for your industrial Ethernet switch? Compare AC, DC, and redundant power options, plus key features for harsh environments.



Professional guide for selecting Industrial Ethernet Switch ports

For enterprises that need to build or optimize networking applications, it is crucial to choose the port settings of Industrial Ethernet Switches reasonably. The following is a professional guide designed to

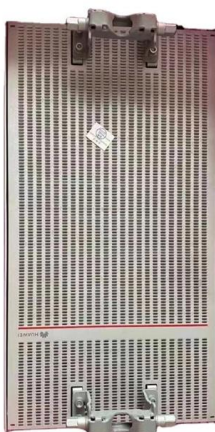


PoE Switch Selection and Deployment in Industrial Automation: A

By analyzing the standards, calculating parameters, and implementing the deployment specifications outlined in this article, engineers can build a stable and efficient industrial PoE power

Industrial Ethernet Switches

Modernize your operations with Cisco Industrial Ethernet switches: Increase productivity, boost security, and empower industrial AI.



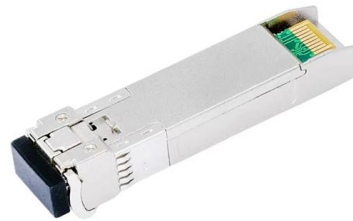
Types of Industrial Grade Network Switches

Learn about L2 and L3 Industrial Grade Network Switches, PoE vs non-PoE types, and how to choose the right rugged switch for your



Industrial Switch Selection Guide: Applicable to Different Industrial

In addition, the hardware reliability of the switch, such as power redundancy and fan design, should also be considered. 6. Protocol Support and Compatibility Industrial switches should support commonly



Durable Industrial Switches

D-Link's Industrial Switches have industrial-grade resilience to maintain your network uptime despite extreme hot and cold temperature variances. With Gigabit

What is an industrial switch and its applications

Construction of 8, 16 and 24-port industrial switch, its applications and features. Learn more about what are the features of an Ethernet switch



Teltonika TSW20000070 Unmanaged, 8 x Gigabit Ethernet POE+, 2 x SFP ports

TSW200 is an industrial Ethernet switch with 2 SFP ports for long-range Fiber-optic communication and 8 Gigabit Ethernet ports that support IEEE802.af and IEEE802.3at Power-over-Ethernet standards.



Industrial Switches (ISW) , Extreme Networks

With flexible PoE options of IEEE 802.3af, 802.3at and 802.3bt supporting up to 90W PoE per port, each switch offers the performance needed for today's power-hungry surveillance devices and WLAN

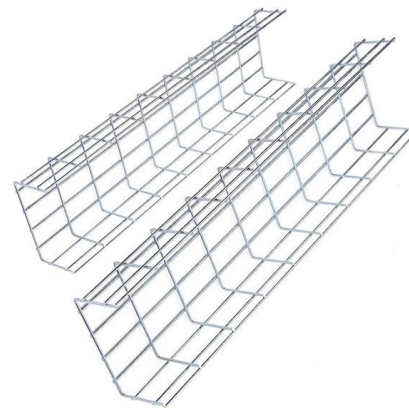


Comprehensive Analysis of Industrial Switches

Comprehensive Analysis of Industrial Switches: An In-Depth Guide to Types, Pros and Cons, and Application Scenarios In the wave of the Industrial Internet, industrial switches, serving as

Industrial Ethernet Switches with 8/16/24 Ports for Harsh

FS Industrial Ethernet Switches with robust design for harsh industrial and outdoor environments subject to vibrations, shocks and extreme temperature fluctuations from -40° to 75° generally.



Industrial Ethernet Switches

Provides an overview of deploying PoE in an industrial environment, exploring how this sector can benefit from PoE technology and describing the



Professional guide for selecting Industrial Ethernet Switch ports

September 26, 2024 Professional guide for selecting Industrial Ethernet Switch ports In the deployment of IIoT, Industrial Ethernet Switch is the core component of the network, and its port settings directly

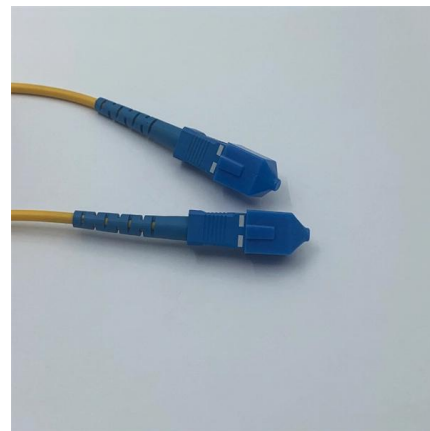


PoE Switches

We provide a wide range of PoE/PoE+/PoE++ switches with up to 90 W output per port to deliver high-speed data transmission while powering high-power devices

Industrial Ethernet Switches , Phoenix Contact

Industrial unmanaged switches from Phoenix Contact feature variable numbers of ports and a narrow design. We provide unmanaged switches with a variety of functions, depending on the application.



For the Industrial PoE switches: What you should know

This guide will explore the robust applications and inherent advantages of Industrial PoE switches, as well as offer a detailed comparison with commercial-grade



Contact Us

For datasheets, pricing, or custom high-speed optical interconnect solutions, please visit:

<https://www.syropy.com.pl>