

Power of devices in network racks





Overview

Check Power Use: Find the wattage of each server, storage, and network device. Multiply by Quantity: Multiply each device's power use by the number of units. It is measured in kilowatts (kW) and represents the total power needed for all IT equipment in that rack. Power distribution inside a data center rack is more complex than many engineers expect. Each rack must safely deliver stable electrical power to dozens of servers, switches, and storage devices while maintaining reliability, airflow efficiency, and electrical safety. Power consumption directly affects operational costs, cooling requirements, and infrastructure planning.



Power of devices in network racks

01/01/2025



Server Rack Power Calculator

Definition: This calculator computes the total power consumption of all devices in a server rack by summing their individual power requirements.

Purpose: It helps data center managers, IT

How To Wire a Server and Network Rack , Tips & Best

Network racks are also seen with UPS devices in the event of power failure. Both rack types come in floor standing and wall mount options, but server



Network Rack: What it is and How it Compares to a 2

A network rack is a metal frame chassis that holds, stacks, organizes, secures and protects various computer network and server hardware devices.

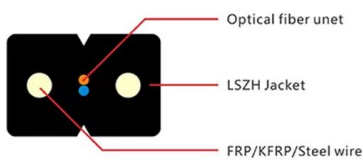
Racks, Power, and So On

Racks are beautiful containers for servers and storage arrays. On this page we'll briefly tackle the subject of what to look for in a rack and related equipment.



NETWORK INFRASTRUCTURE

RACKS AND ENCLOSURES Racks and enclosures are the frames, cabinets and housings that support passive components and active electronics across multiple technical spaces and environments. The



5 key criteria for distributing and managing rack-level power

Standard density: Offering up to 5 kW, these PDU systems are well suited for wiring closets and equipment rooms that house traditional servers, network switches, KVM (keyboard, video, mouse)



Server Rack Power Consumption Made Simple: A

Simplify server rack power calculations with this practical guide. Learn key steps, actionable tips, and tools to optimize data center efficiency and cut costs.



Deploying High Power to IT Equipment Racks

Data centers are finding that they must deploy more and more power to their racks. This white paper addresses considerations surrounding the deployment of high power. Data center managers are



Server Rack Power Calculator

1. What is a Server Rack Power Calculator?
Definition: This calculator computes the total power consumption of all devices in a server rack by summing their individual power requirements.

Deploying High Power to IT Equipment Racks

Trends in Data Center Power Deployment Data center managers are deploying more and more power to their IT equipment racks to keep up with power-hungry devices. From the chart below, nearly half



Complete Guide for Power Distribution in Servers, Racks, and Data

These devices ensure clean, stable power reaches every server, switch, and storage device in your racks, while offering the monitoring and control capabilities vital for modern data center management.

Understanding Network Racks: Essential for



Organized IT

A network rack, often referred to as a server rack or data rack, is a standardized frame that holds multiple network devices such as servers, switches, routers, patch panels, and other IT



Rack PDU Selection Guide: Power Distribution Units for

Explore our comprehensive Rack PDU Selection Guide for server racks. Find the perfect power distribution unit from Eaton for your data center or

Data center power sizing calculator , Schneider Electric

Use this TradeOff Tool to estimate the power required by a data center with traditional, or AI/HPC servers. Configure different server, storage, and design



Guide to Calculating Power Consumption Costs per

Understanding and managing power consumption is crucial for efficient data center operations. Calculating the power cost per rack can help optimize energy usage,



Data Center Racks, Cabinets, and Cages: An In-Depth Guide

Inside a data center, a labyrinth of servers and high-tech networking gear are arranged in specialized racks, secure cabinets,

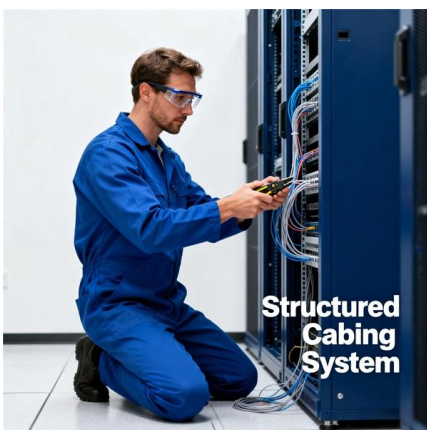


The Ultimate Guide to Choosing the Right Network Rack

The Ultimate Guide to Choosing the Right Network Rack for Your Business Introduction In today's highly-connected and increasingly digitized

The Ultimate Guide to Choosing the Right Network Rack for Your

Choosing the right #network rack is key for secure, scalable #IT #infrastructure. This comprehensive guide explores sizing, cooling, security, cable management, and more to future-proof



Network & Server Rack Setup Best Practices

Learn network & server rack setup best practices. Get tips for how to setup a server or network rack, how to layout your equipment, & enhance your



What Power Is Needed For A Server Rack?

Discover the power requirements for a server rack and ensure seamless operations. Learn about the necessary electrical resources for optimal



The Best Network Server Racks and Enclosures

Check out the best network server racks and enclosures for your home or business from reputable companies like Startech and Navepoint.

How Many KW Does a Rack Use?

Rack Density: The quantity of devices arranged in a single rack is referred to as rack density. In a rack, power consumption rises with the number of servers and gadgets crammed in. High-density racks



How to Calculate Rack Power?

Rack power is defined as the total electrical power utilized by all the apparatuses that are mounted on the server rack. This ranges from servers, storage, network switches and other IT resources.



100+ kW per rack in data centers: The evolution and

The surge in power density to 100+ kW per rack in data centers is both an evolution and a revolution in the industry, signifying a shift in how we



How to Calculate Rack Power?

Calculating rack power is a crucial step in data center design and management. Accurate power calculations ensure efficient operation, prevent overloading and help optimize cooling systems.

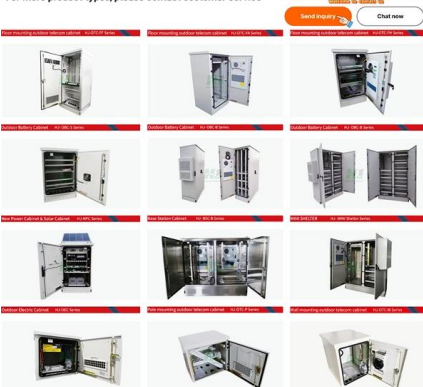
Data Center Rack Power Distribution Explained: CEE

Learn how power flows inside modern data center racks--from facility power to rack PDUs. Discover how E-abel server cabinets and CEE connectors



Powerful manufacturers · 20+ years of experience · Support customization

For more product types, please contact customer service>>>



Data Center Rack Power Distribution Explained: CEE

This article explores how power is connected inside modern data center racks, examining the flow of electricity from facility power feeds to rack



Contact Us

For datasheets, pricing, or custom high-speed optical interconnect solutions, please visit:

<https://www.syropy.com.pl>