

# **PoE Switches and Optical Transceivers**





## Overview

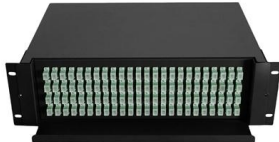
---

Omnitron PoE Fiber Switches, PoE Media Converters, and PoE Extenders provide network distance extension to PoE, PoE+ and High-Power PoE network devices.



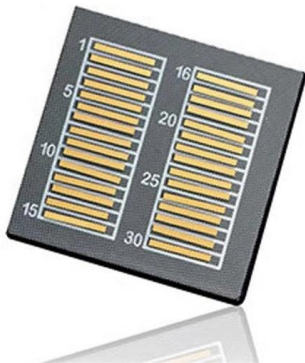
## PoE Switches and Optical Transceivers

---



### Industrial PoE & Ethernet Switches, Media Converters,

Secure and scalable networking solutions designed to support critical infrastructure and fiber connectivity across federal, state, and municipal systems. High

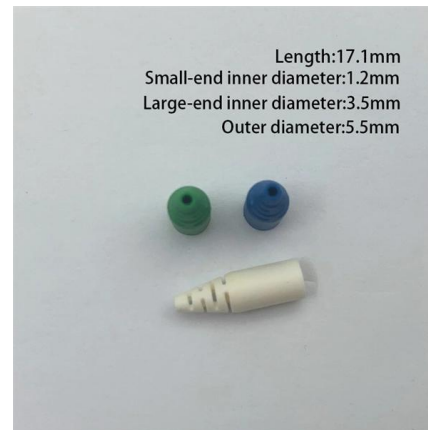


### 1PCS 100/1000M Industrial POE Switch 2 Optical

2 SFP optical port + 4 POE electrical port, different types of SFP modules (such as single mode/multimode, transmission distance) can be flexibly replaced to adapt to complex fiber

### What is a PoE Switch? Power Over Ethernet Basics and Benefits , ABPTEL

Learn what a PoE switch is, how it works, and the key benefits it offers for modern networks. Discover ABPTEL's professional Power over



### A Comprehensive guide to PoE Switches and their Uses

A PoE (Power over Ethernet) switch is a network switch that delivers both power and data through a single Ethernet cable to connected devices such as IP cameras,



### PoE Switch , Omniton Systems

Omnitron Power over Ethernet (PoE) switches enable distance extension over fiber optic cabling to network edge devices. They are available as unmanaged or



### Optical Transceiver-Velolan PoE Switch , Network Switches, SFP

Velolan Networks manufacture PoE Network Switches, Outdoor PoE Ethernet Switches, SFP Modules, Optical Transceivers, Network Cabinets, and Off Grid Solar Power Solutions.



### PoE Fiber Switches, PoE Media Converters, and PoE

Supports IEEE 802.3af PoE (15.4W), IEEE 802.3at PoE+ (30W), HPoE (60W) and IEEE 802.3bt (60W and 100W) TAA compliant PoE switches and media



## PoE-Series Switches Transceiver Modules Guide

Supported Transceivers Information The following tables list supported 100Base SFP transceivers, 1GE SFP transceivers and 10GE SFP+ transceivers for FS PoE-series switches. They were tested by FS



### Campus Switches RG-CS86-20XS4VS2QXS-D 20-Port 10/2.5GE

RG-CS86-20XS4VS2QXS-D 20-Port 10/2.5GE (SFP+), Layer 3 Ruijie Core/Aggregation Switch with Cloud Management, 4-Port 25/10GE (SFP28), 2-Port 40GE Suitable for small & medium enterprise

### How to Choose the Right Optical Transceiver in 2025

Learn how to select the right optical transceiver for your switch or router. Compare SFP, SFP+, QSFP28, Cisco SFPs, and Huawei modules with



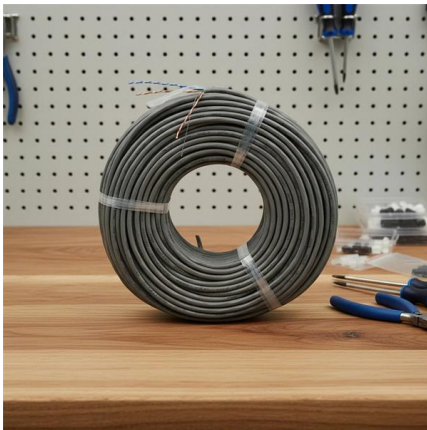
### Optical Transceiver Module

Cisco C9200L-24P-4X-E Overview The Cisco C9200L-24P-4X-E is an enterprise-class switch tailored for modern business networks requiring robust Power over Ethernet (PoE) and high-speed uplinks.



### 10Gbps BIDI SFP+ Optical Transceiver for POE

10GBase-ER SFP Optical Transceiver, Dual LC single-mode fiber, 1310nm, up to 10km super long distance transmission for POE switch with 10G SFP uplinks



### Buy Cisco 40G Optical Modules , Price, Stock & Compatibility

Cisco 40G Optical Modules are used for 40 Gigabit Ethernet links between compatible Cisco switches, routers, and data center platforms. They are common in aggregation, spine, core, and high

### SFP Transceiver Optical Fiber Single-Mode LC 1000Base-BX

1 SFP No. Fiber optic ports 1 LC Console port - technical specifications Quality of Service (QoS) - VLAN support - MAC Table Size - PoE 802.3af/at support - No. PoE ports - dimensions Width 57 mm



### The Ultimate Guide to SFP Optical Transceivers for High

This manual discusses Small Form-factor Pluggable (SFP) optical transceivers used in modern networks to ensure effective and safe transmission



## What is a PoE Switch? Power Over Ethernet

Learn what a PoE switch is, how it works, and the key benefits it offers for modern networks. Discover ABPTel's professional Power over



## Altronix Products

Altronix NetWaySP4P provide four (4) 1Gb SFP ports and four (4) power outputs (240W total power) to be transmitted over single, multi-mode fiber as well as composite cable (fiber + copper combined) to



## What Is PoE Media Converter: A Complete Guide (2026)

From the table, it can be clearly seen that fiber optic transceivers only undertake the task of converting optical and electrical signals, while PoE media converters simplify the originally



## PoE Media Converters

PoE fiber optic media converters are widely used across industries where high-speed data transmission, long-distance connectivity, and remote power deliveries are required.



### All-Optical PoE Switch

This switch provides 8 × 1G Ethernet ports with auto-negotiation, 1 × 2.5G uplink optical port, rich interfaces, and is PoE+ compatible, supporting full



### XGS-6320-8UP4X Layer 3 PoE Managed Switch

PLANET XGS-6320-8UP4X Layer 3 10Gbps Ethernet PoE++ Switch is designed for high bandwidth and power-hungry devices like Wi-Fi 7/6E APs, NAS units, thin

### What Is PoE Media Converter and How Does It Work?

This post talks about how a PoE fiber to ethernet converter with poe works, how to use media converter with PoE, and how to choose the best PoE media converter.



### PoE Media Converters , Link Copper and Fiber Networks

PoE Media Converters transparently link fiber to copper while providing up to 100W Power over Ethernet (PoE) to Powered Devices (PDs) such as IP cameras, VoIP phones and wireless access points.



### PoE Switch , Industrial PoE Switch , GWT

These transceivers adopt a LC interface and are compatible with IEEE802.3ba, SFF 8472, SFP MSA and other standards. They are characterized by low power consumption, small size and high reliability.



### Cisco 10G Routed PON ONT Data Sheet

These 10G optical network terminals for fiber-to-the-premises applications can be managed remotely and are interoperable with the Cisco Routed PON solution. Three models offer a

## Contact Us

---

For datasheets, pricing, or custom high-speed optical interconnect solutions, please visit:  
<https://www.syropy.com.pl>