

# PoE Switch V-Number





## PoE Switch V-Number

---

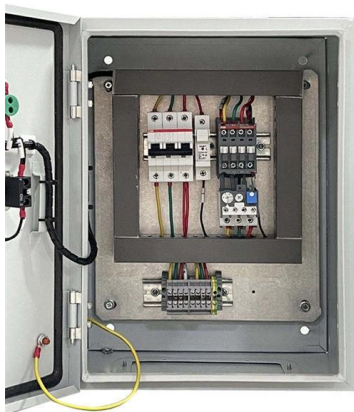
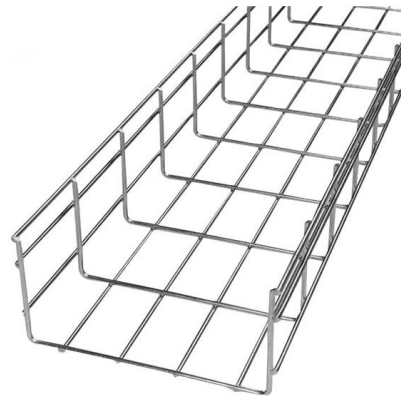


### **R8N87B HPE Aruba Networking CX 6000 24p 10M 100M 1G Class4 PoE**

The HPE Aruba Networking CX 6000 24p 10M/100M/1G Class4 PoE 4p SFP 1G 370W Switch (R8N87B) is a fully managed Layer-2 access switch designed for enterprise branch offices and SMB

### **PoE Switch: Ultimate Guide**

Discover the convenience of a PoE switch - a single device delivering both data and power. Simplify your network setup for improved efficiency.



### **Power over Ethernet (PoE, PoE+, UPOE, UPOE+)**

In this lesson, we are going to learn what is Power over Ethernet. What is the difference between the different standards PoE, PoE+, UPOE, and UPOE+? How

### **Power Over Ethernet (PoE) Switches - D-Link Systems,**

Power Over Ethernet (PoE) Switches Power Over Ethernet (PoE) Switches Simplify and empower your network infrastructure with D-Link's Power over Ethernet



### 5 Port Types of Cisco PoE Switches

Recently, as the IoT technology develops fast, PoE switches become more important. Many small devices, like Access points, IP Phones and other



### What is a poe switch and how to select it?

A Power over Ethernet switch is a network switch that has PoE functionality integrated. Learn about different types, benefits and applications of



### Understanding the IEEE 802.3bt PoE Standard

Introduction With the introduction of the IEEE 802.3bt Power over Ethernet (PoE) standard, Ethernet cables can now carry up to 90 W of power, enabling a broad range of new applications. Yet, despite





### UniFi PoE Switch Datasheet

For 24V passive PoE devices, manually enable 24V passive PoE using the UniFi Controller software. The UniFi Switch provides fiber connectivity options for easy expansion of your networks. Each UniFi

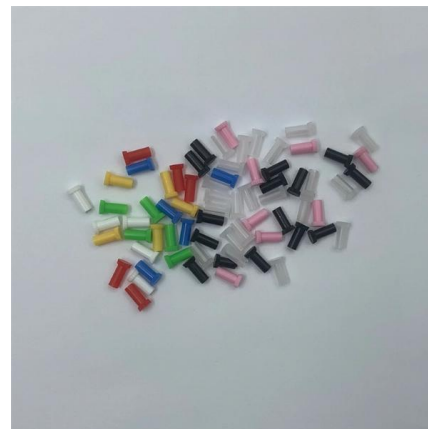


### S0M89A HPE Aruba Networking CX 6200F 48G Class 4 PoE 4SFP

The HPE Aruba Networking CX 6200F 48G Class 4 PoE 4SFP+ 370W TAA-Compliant Switch (S0M89A) is a high-performance Layer-2/Layer-3 stackable access switch designed for enterprise

### TIDA-050026-23881 reference design , TI

This reference design showcases a Type-4 (PoE 2, 4-Pair) 24-port Ethernet switch for Power over Ethernet (PoE) applications which can send up to 90W per port for for IEEE 802.3bt (PoE 2)



### Power over Ethernet (PoE) Explained: PoE Standards

Explore different PoE standards and wattage levels to power devices efficiently. Unlock smarter networking with the right PoE switch today!



### Ubiquiti UniFi Switch Lite 8 PoE , 8-Port Gigabit Switch

Product Description The USW-Lite-8-PoE is a fully managed Layer 2 switch with eight Gigabit Ethernet ports for your RJ45 Ethernet devices. Four ports also offer



### PoE Calculator

This tool calculates voltage drop and power losses in the cable, voltage that reaches PD, and required PSE size to power your application with a single-signature PoE.

### PoE vs. PoE+ vs. PoE++: What's the Difference?

Different Types of Poe Standards For Poe SwitchesPoe vs PoE+ vs PoE++ ComparisonQuick Comparisons of The Poe, PoE+, and PoE++Which Poe Switch Is The Best For You?Reasons to Consider When Upgrading Your Poe SwitchAdditional Factors to Consider When Choosing A SwitchBonus Tips: How to Check Poe Standards For Reolink Poe CamerasFAQsConclusionPower over Ethernet (PoE) is a technology that enables the transmission of electric current and data simultaneously over Ethernet cables, eliminating the need for separate power cables. This section will provide a brief overview of the three main PoE standards - Type 1, Type 2, and Type 3 - developed by IEEE and explain the key differences betweSee more on reolink Missing: V-NumberMust include: V-Number Wikipedia



### Power over Ethernet - Wikipedia



4PPoE provides power using all four pairs of the connectors used for twisted-pair Ethernet. This enables higher power for applications like pan-tilt-zoom cameras

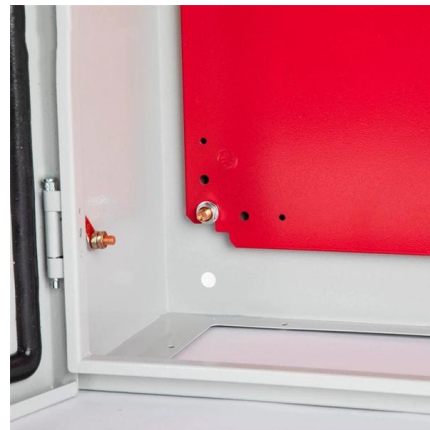


### **Everything you need to know about the PoE Switch**

A PoE switch is a type of network switch that supports PoE technology. When network equipment is connected to a PoE switch, the switch checks whether

### **Power over Ethernet (POE) pinout signals @ PinoutGuide**

A midspan power supply, also known as a PoE power injector, is an additional PoE power source that can be used in combination with a non-PoE switch. Standards-based Power over



### **Understanding PoE on EX Series Switches , Junos OS , Juniper**

The EX4100 switch offers PoE that enables consistent power to be provided to the endpoints, even when the switch is rebooting. The switch also supports a fast PoE capability that delivers PoE power

### **Ubiquiti Pro Max 48 48 Port 2.5G/1G PoE++ Compliant**

Expand your business's network with the Pro Max 48 PoE 48-Port 2.5G / 1G Managed Network Switch from Ubiquiti Networks to support advanced IP



### 2024 PoE Switch Quick Reference Guide

These Layer 2 switches support up to 10 Gbps, 370W PoE power budget, 6 kV surge protection, and automatic Voice VLAN. With 10 to 52 ports, they can power and connect access points, cameras,



### Power over Ethernet (PoE)

Power over Ethernet (PoE) is a technology, described by IEEE 802.3af standard, that allows IP telephones, wireless LAN Access Points, Security network cameras and other IP-based



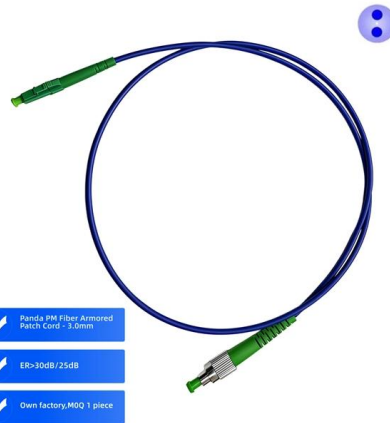
### Power over Ethernet (PoE) VoIP Phones: The Complete

Power over Ethernet (PoE) powers devices like VoIP phones over network cables, reducing clutter and simplifying the installation of your phone system.



## Cisco C1300-24P-4G 24 Port PoE Gigabit Managed Switch

Linkworld Infocom - Offering Cisco C1300-24P-4G 24 Port PoE Gigabit Managed Switch, Cisco Switch at INR 40000 in Mumbai, Maharashtra. Check best price of Cisco Network Switch in Mumbai offered by



## FL SWITCH 1708 M12 POE

The device is a compact switch in robust IP67 metal housing. It has eight 8-pos. M12 Ethernet connectors, which enable PoE/PoE+ devices to be supplied and operation with speeds of



## Contact Us

---

For datasheets, pricing, or custom high-speed optical interconnect solutions, please visit:  
<https://www.syropy.com.pl>