

# PoE Switch Aggregation Layer

**Waterproof and dustproof, reliable and safe**

The outer classic sink design allows the sealing ring of the cabinet and door to be seamlessly compressed without leaving a trace of gaps





## Overview

---

A scalable enterprise switching architecture, or enterprise switching architecture, consists of three functional layers: 1. Optimizes critical services with QoS, traffic shaping, multicast support, and ISM VLAN for enhanced efficiency 24 PoE ports support up to 60 W each, with a 790 W budget expandable to 1440 W—ideal for 10G PoE devices Two hot-swappable power modules enable 1+1 redundancy and load sharing for. LACP (Link Aggregation Control Protocol): LACP is an industry-standard protocol (802. 3ad) that dynamically manages link aggregation, provides automatic failover, and helps prevent misconfigurations by ensuring both ends of the link agree on the aggregation settings. 3bt PoE++ Switch with dual modular power supply slots expandability promotes power management efficiency and flexibility in large-scale networks, such as enterprises, hotels, shopping malls, government buildings, and other public areas. Together, these layers can offer consumers a network that is safe, reliable, and affordable.



## PoE Switch Aggregation Layer

---



### What is Switch Aggregation, Its Role and Selection Advice

What is switch aggregation? Switch aggregation refers to the concept of consolidating multiple access layer switches into a single aggregation layer switch in a traditional three-tier network

### SGS-5240-24P4X Layer 2+ 24-Port 10/100/1000T

Central IP Stacking Management Positioned as the distribution or aggregation layer switch for large networks, the SGS-5240 series supports IP stacking function that



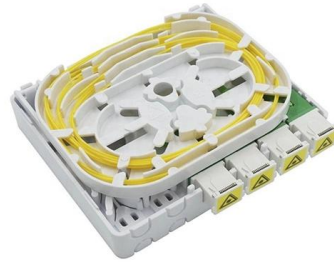
### Cloud Network Infrastructure

Leaf switches provide connectivity to storage, compute, service, and data center edge network elements. Leaf switches may be deployed by themselves or in a



### TP-Link TL-SG3428XMP Managed Switch Price in Bangladesh

TP-Link TL-SG3428XMP offers 24 PoE+ ports, 4x10G SFP+ uplinks, Omada SDN management, and advanced enterprise networking features.



### What Is an Aggregation Switch and How to Choose?

As the physical part of the aggregation layer, aggregation switches typically play a crucial part in the overall network architecture. So, what exactly is an aggregation



### 30-Port Lite Layer 3 Stackable Managed Gigabit Switch

The D-Link DGS-3130 Lite Layer 3 Stackable Managed Switches are a Gigabit access layer solution specifically designed to connect end-users in enterprise and metro Ethernet access networks. The



### What Is an Aggregation Switch and How to Choose?

An aggregation switch is a network device that consolidates traffic from multiple access switches, wireless access points, or other edge devices and forwards it to





### **GS-6322-48UP4X**

The GS-6322-48UP4X allows each of the connected PoE IP cameras or PoE wireless access points to reboot at a specified time each week. Therefore, they



### **What Is an Aggregation Switch and How to Choose?**

An aggregation switch is a network device that consolidates traffic from multiple access switches, wireless access points, or other edge devices and

### **Core, Aggregation, or Access Switches? Choose the**

Discover the crucial differences between core, aggregation, and access switches. Find out which type can best transform your network's



### **48 ports poe aggregation network switch with 6 ports 10 gb SFP+ layer**

X1580P-48T6X, the layer 3 aggregation network switch has 48 ports gigabit ethernet PoE, and 6 ports 10G SFP+.



### Aggregation Switches , Managed Core Network

High-performance aggregation switches designed for industrial and FTTH networks. Support Layer 2/3 management, Gigabit and 10G uplinks, redundant power,



### TP-Link TSG2210P Desktop Switch Price in Bangladesh

TP-Link TL-SG2210P smart PoE switch features 8 Gigabit PoE+ ports, Omada SDN support, and advanced Layer 2 management for business networking.



### Aggregation Switch , D-Link

Provides advanced Security ACLs for improved security, traffic control, and QoS, ensuring efficient and optimized networking.



### Network Switches

Our rack-mount industrial switches provide versatile connectivity with PoE, high-speed ports, stacking capabilities, and built-in security. These attributes make





## 24-Port 10G Layer 3 Stackable Aggregation Managed PoE Switch

Enables Layer 3 routing between different parts of your network, improving efficiency by directing traffic to its optimal destination. Featuring 24×10G multi-Gigabit ports + 4×10/25G SFP28 uplinks, this



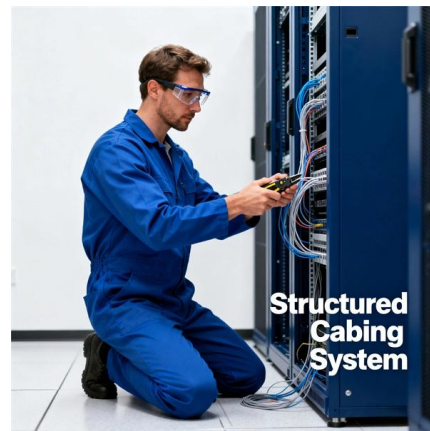
## Everything You Need to Know About Aggregation Switch

An aggregation switch operates at Layer 2 or Layer 3 of the OSI model, depending on the configuration and topology of the network. The



## 3-Layer Enterprise Switching Architecture: Core vs Access

Explore enterprise switching architecture and see how core, aggregation, and access layers integrate with PoE, oversubscription, and design



## Why Enterprise PoE Switches with Aggregation Edge AI Are the

This white paper explores how enterprise PoE switches combined with edge AI at the aggregation layer enable more efficient and intelligent building networks.



### Ubiquiti Pro Max 48 48 Port 2.5G/1G PoE++ Compliant

Expand your business's network with the Pro Max 48 PoE 48-Port 2.5G / 1G Managed Network Switch from Ubiquiti Networks to support advanced IP



### Engenius

The EnGenius Fit Managed Switch EWS2910FP-FIT is an 8-port Gigabit PoE+ Layer 2 plus switch with a 110W PoE budget and 2 SFP uplink ports. It offers multiple management options for small business

### Aggregation layer , FortiSwitch 7.6.0 , Fortinet Document Library

Aggregation layer Aggregation layer The aggregation (sometimes also called distribution) layer is a real crossroad. Its primary goal is to increase network scalability by providing a single place to



### UniFi Professional Switching

High-performance switching with up to 25G SFP28, 10GbE & 2.5GbE PoE+++ for robust, high-capacity networking.



### What is an Aggregation Switch?

The aggregation switch is located in the middle of the network architecture, which is equivalent to a middle-level manager of a company. It



### What is Link Aggregation (LAG) in Networking?

Link aggregation is a technique used in networking to bundle multiple physical ports on a network device to operate as a single link. The aggregated link acts as a

### UniFi Pro XG 10 PoE

1U, professional-grade 10-port, Layer 3 Etherlighting(TM) PoE+++ switch with (10) 10 GbE and (2) 10G SFP+ ports.



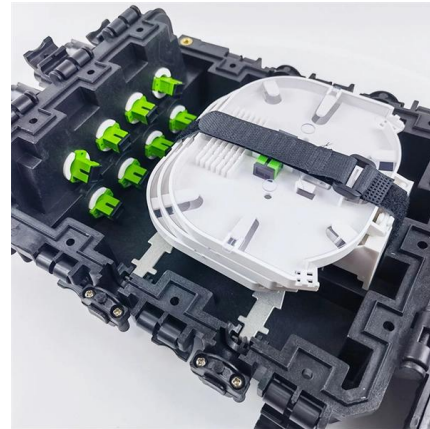
### 24-Port 10G Layer 3 Stackable Aggregation Managed

24 Ports 10G/multi-Gigabit for downlink 4 Ports 10/25G SFP28 for uplink PoE IEEE802.3af/at/bt options, power budget 790 W 6kV surge protection on 10G



### UniFi Pro XG 8 PoE

Compact desktop/wall-mountable, professional-grade 8-port, Layer 3 Etherlighting(TM) PoE++ switch with (8) 10 GbE and (2) 10G SFP+ ports.



### Port Aggregation FAQs

Port aggregation can increase maximum throughput, and allow for network redundancy. It does this by splitting traffic across multiple ports instead of forcing

### Comparing TP-Link TL-SG1008MP 8-Port Gigabit PoE+ Compliant

Compare TP-Link TL-SG1008MP 8-Port Gigabit PoE+ Compliant Unmanaged Switch vs TP-Link TL-SG2008P 8-Port PoE+ Compliant Gigabit Managed Switch vs TP-Link Festa FS308GP 8-Port PoE+



## Contact Us

For datasheets, pricing, or custom high-speed optical interconnect solutions, please visit:  
<https://www.syropy.com.pl>