

PoE Branch Switch





PoE Branch Switch



FS Community

Hier sollte eine Beschreibung angezeigt werden, diese Seite lässt dies jedoch nicht zu.

ALLNET-Shop , PoE Switches , online kaufen

Jeder Allnet PoE Switch verfügt nach dem PoE Standard IEEE 802.3af über Portausgänge mit 15.4 Watt, die meisten zusätzlich nach IEEE 802.3at bis zu 30 Watt pro Port, abhängig von der PoE



2024 PoE Switch Quick Reference Guide

PoE switches offer a convenient and cost-effective solution for businesses and organisations of all sizes, as they eliminate the need for additional electrical infrastructure and can simplify installation and

A Comprehensive guide to PoE Switches and their Uses

A PoE (Power over Ethernet) switch is a network switch that delivers both power and data through a single Ethernet cable to connected devices such as IP cameras,



Amazon : Poe Switch

Shop managed and unmanaged PoE switches with varying gigabit port configurations. Build your network with flexible connectivity solutions.



What is PoE Switch: Everything You Need to Know

What is PoE Switch? Our article gives you in-depth knowledge of what a PoE switch is and the PoE Standard. The benefit of IoT Networking.



What is a PoE Switch? Everything you Need to Know About PoE Switches

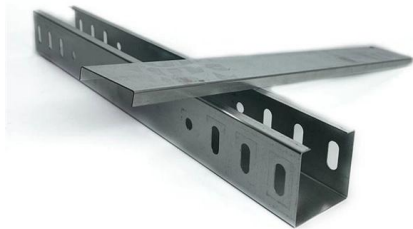
What is a Power over Ethernet (PoE) Switch? Power over Ethernet (PoE) switches are revolutionizing network setups by delivering both data and power through a single Ethernet cable.





Fixed Port L3 Managed Ethernet Switches

HPE Fixed Port L3 Managed Ethernet Switches deliver high-speed connectivity for edge, branch, and SMB deployments. Simplify IT with HPE Managed Ethernet



PoE Configuration Guide

These sections provide information about the conditions required for a PoE capable switch to provide power, how the PoE-capable switch identify the power requirement of the powered device, and how

Installing and Troubleshooting Power over Ethernet (PoE)

This is typically a PoE-enabled network switch but can also be a midspan injector used in instances where the switch is not capable of supplying power. Twisted



PowerSwitch Campus and Branch LAN Access and Aggregation

Dell PowerSwitch N series is a family of energy-efficient, cost-effective 1GbE, 2.5GbE, 5GbE and 10GbE Open Networking switches designed for modernizing and scaling campus networks.

Power over Ethernet



Endpoint devices (commonly PoE switches) are Ethernet networking equipment that includes the power-over-Ethernet transmission circuitry. Midspan devices are



Power over Ethernet (PoE) User Guide for EX Series Switches

For EX Series switches that support PoE ports, the factory default configuration enables PoE on the PoE-capable ports, with default settings in effect. You might not have to do any additional

What is a PoE Switch

Network switches form the backbone of any Local Area Network, or "LAN" (pronounced "lan") for short. On this page you will learn what differentiates



Campus & branch switches design resources , TI

Use the interactive reference diagram below to design modern, high-speed campus and

Streamline your network with NETGEAR PoE switches that deliver power and data over one cable. Choose from managed and unmanaged switches for any setup. Shop now.



LoRawan outdoor base station



Was ist ein PoE-Switch (Power over Ethernet Switch)?

PoE-Switch ist eine Technologie auf Zugriffslayer, die Datensignale und elektrische Energie in einer einzigen Ethernet-Kabelverbindung kombiniert und beides

Omada

Power over Ethernet (PoE) is a technology that allows network switches to transmit both power and data through an Ethernet cable simultaneously. PoE Switches



What is a poe switch and how to select it?

A Power over Ethernet switch is a network switch that has PoE functionality integrated. Learn about different types, benefits and applications of



Poe Switch

A PoE switch is a device that allows you to connect PoE devices to your network. A PoE switch can be used to connect network equipment such as routers and

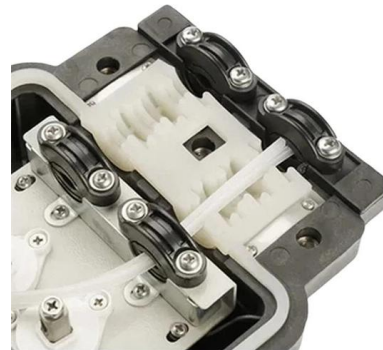


What is a PoE switch (Power over Ethernet switch)?

What is a PoE switch (Power over Ethernet switch)? Power over Ethernet switch (or PoE switch) is an access layer technology that combines data

Unmanaged PoE switches , Phoenix Contact

The unmanaged PoE switches of the 1000 series enable you to supply up to eight terminal devices with power and data via the same Ethernet cable.



What is a PoE Switch? [Comprehensive Guide]

A PoE switch delivers power and data over Ethernet, simplifying network setups and reducing costs for devices like IP cameras, phones, and



Cisco Catalyst 2960-L Series 24-Port and 48-Port

Front Panel This section describes the front panel components of a 24-port and 48-port Cisco Catalyst 2960-L switch. 24 or 48 downlink ports of one



What Is PoE Switch? Where Can You Use It?

What Is PoE Switch? Where Can You Use It? What are the differences between a PoE switch and a regular switch? PoE switches deliver power and data over

Contact Us

For datasheets, pricing, or custom high-speed optical interconnect solutions, please visit:
<https://www.syropy.com.pl>