

Pm1950 Fiber Optic Patch Cord





Pm1950 Fiber Optic Patch Cord



High Quality PM Optical Fiber Patch Cord

Connet selects high-precision FC-type fiber connectors and ceramic ferrules for making high-quality polarization-maintaining optical fiber patch cords. The

PM Fiber Optic Patch Cord , MEISU

At present, MEISU's PM fiber patch cord are all offered in PANDA fiber with custom key orientation. As for the types of fiber patch cord provided by MEISU, they are



PM Fiber Optic Patch Cord , MEISU

Normally, fiber optic patch cord can transmit line polarized light. Capable of realizing the high-precision measurement of physical quantity, PM patch cord can

PM Fiber Patchcord , SIMTRUM Photonics Store

Q:What is PM Fiber Patchcord and use for? A:PM Fiber Patchcord, where "PM" stands for Polarization-Maintaining, is a specialized type of fiber optic patch cord



2000nm Polarization Maintaining Patch-cord

2000nm Polarization maintaining (PM) optical patch cords are widely used in polarization sensitive fiber optical systems for transmission of light that requires the PM state to be maintained. Polarization

Polarization Maintaining Fiber Patch Cords

2. Patchcords with other type fiber or consigned fiber are also available; Devices can only work in the core of Double Cladding (DC) Fiber, Cladding Power must be stripped before connecting the device.



Standard PM Fiber Patchcord Datasheet

Description These fiber optic diaphragm cables maintain polarization using high quality narrow key ceramic FC/PC connectors at both ends. These cables are available off the shelf and have a high



Polarization Maintaining Components



1950nm 1x2(2x2) PM Fiber

Description: 1950nm 2x2 PM Fiber Fused Coupler, P grade, 1W, 50:50 coupling ratio, 1.0m PM1950 panda fiber with 0.9mm OD loose tube, and FC/APC connectors at all ports.

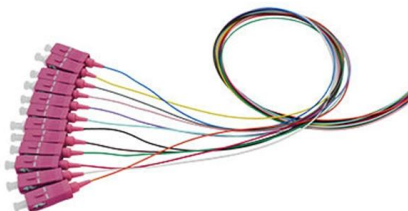


Fiber Patchcords

2000nm PM Polarization Maintaining Fiber Patchcords with custom termination - Optosun Technology

Standard PM Fiber Patch Cables , Polarization

Standard Off-the-shelf Patch Cables We carry many standard fiber optic patch cables available off-the-shelf for operating wavelengths from Visible to NIR. If there is not



Fiber Patchcords

R & D systems Optical fiber Systems Monitoring Fiber optic Instrumentation Fiber Types: PM1550 Nufern PM1950 fiber Wavelength: 2000 nM Pigtail options: 250um bare fiber 900um loose tube 2mm

PMP 2000



Polarization Maintaining Patchcord (PMP Series)
Rev 11 The PM Patchcord series has excellent environmental stability, high return loss, low insertion loss. It is ideal for PM amplifiers, fiber lasers and



Single Mode Fiber Optical Patch Cable SM1950

These fiber optic patch cables are terminated on both ends with high-quality ceramic connectors, featuring polished to reach a return loss > 50 dB. Narrow key FC/PC Each cable is a standard in



Polarization-Maintaining Fiber Optical Patch Cable

SKU: FCPM These polarization-maintaining fiber optic patch cables are terminated on both ends with high-quality, narrow key, ceramic FC/PC connectors, featuring high-quality polish with a typical



Fiber Patchcord Polarization Maintaining PM

Application Fiber Laser Fiber Amplifier Testing
Instrument Optic lab use





Polarization Maintaining Fiber Optical Patch Cable

Each cable is individually tested to ensure the specified extinction ratio and insertion loss at fiber-to-fiber junctions. Each patch cable includes two protective caps that shield the ferrule ends from dust and



Fiber Patchcords

Fiber optic Instrumentation Fiber Types: PM1550
Nufern PM1950 fiber Wavelength: 2000 nM
Pigtail options: 250um bare fiber 900um loose tube 2mm loose tube 3mm loose tube Assembly length: 1M,

Polarization-Maintaining Single Mode Patch Cables

In addition to our stocked polarization-maintaining patch cables, we offer a custom fiber optic patch cable service with many options eligible for same-day shipment. Please contact Tech Support for



2000nm Polarization Maintaining Patch-cord

Our PM patch cord features high extinction ratio, low insertion loss, high return loss and long term reliability. Various PM fiber and connectors are available.





PM Polarization Maintaining Fiber Patchcord

Application Fiber Laser Fiber Amplifier Testing Instrument Optic lab use



1550nm Fujikara PM Fiber Jumper Polarization

1550nm Fujikara PM Fiber Jumper Polarization Maintaining Fiber Optic Patch Cord Precise refractive index distribution Good load-carrying symmetry

1PC FC/APC fiber optic patch cords PM1950-1m-FA

Find many great new & used options and get the best deals for 1PC FC/APC fiber optic patch cords PM1950-1m-FA at the best online prices at eBay! Free shipping for many products!



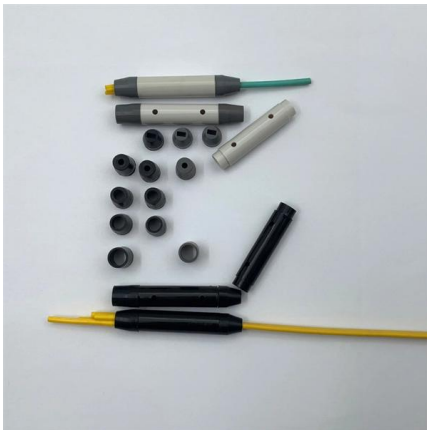
Polarization Maintaining (PM) Patch Cord

Polarization maintaining (PM) fiber optic patch cord is built with polarization maintaining panda fiber and connectorized by FC/UPC or FC/APC connectors.



Polarization Maintaining Fiber Patch Cords

Patchcords with other type fiber or consigned fiber are also available; Devices can only work in the core of Double Cladding (DC) Fiber, Cladding Power must be stripped before connecting the device.



Polarization Maintaining Patchcord

The Polarization Maintaining (PM) fiber optic cable of GEZH Photonics are using famous PM optical fibers (Such as Nufern PM Fibers or Fujikura PM Fibers) . We

Polarization-Maintaining Fiber Optical Patch Cable

Each cable is individually tested to ensure the specified extinction ratio and insertion loss at fiber-to-fiber junctions. Each patch cable includes two protective caps that



Product parameters



Polarization-Maintaining Fiber Optical Patch Cable

These polarization-maintaining fiber optic patch cables are terminated on both ends with high-quality, narrow key, ceramic FC/PC connectors, featuring high-quality polish with a typical return loss of 50



PM Fiber Patch Cord, Polarization Maintaining Fiber

Single-mode optical fibers which can preserve the same state of polarization are usually called polarization-maintaining (PM) fibers but are sometimes called



Contact Us

For datasheets, pricing, or custom high-speed optical interconnect solutions, please visit:
<https://www.syropy.com.pl>