

# **Photovoltaic cable tray bends and elbows**





## Overview

---

These systems typically consist of open or closed metal or non-metallic trays, along with associated fittings like supports, bends, and connectors. A typical application would be managing the power cables connecting solar panels to inverters and the grid in a large-scale. Only in this long way, we are able to develop all the necessary knowledge and experience to apply this into the market as a quality service with hard cable containment. OBO cable support systems combine the best possible protection with rapid mounting. Choosing the right solar cable tray for photovoltaic energy is important if you want a stable system, reduced maintenance, and long-term safety. Armorduct Systems are a UK manufacturer of steel cable management systems including cable trunking, tray, basket, floor boxes, power track & more.



## Photovoltaic cable tray bends and elbows

---



### Armorduct Systems Ltd , Manufacturing Cable

Armorduct Systems are a UK manufacturer of steel cable management systems including cable trunking, tray, basket, floor boxes, power track & more. Wide

### rbt-solar\_katalog\_digital\_ver2

The system is intended for installations, where the primary criterion is the need to install trays outside the building and in cases where a warranty period exceeding 10 years is required for C3



### photovoltaic plants Cable mana

Sometimes, when they open, cables can be broken. If the cables broken, it must to be welded, losing power or data capabilities. All these problems, make larger the delivery time of the work The



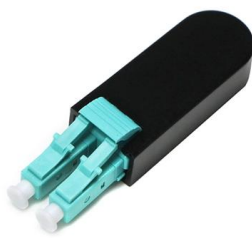
### Top Cable Tray Systems for Renewable Energy Facilities

These systems typically consist of open or closed metal or non-metallic trays, along with associated fittings like supports, bends, and connectors. A typical application would be managing the



### Fiberglass Cable Tray Horizontal Adjustable Bends

Fiberglass - Horizontal Adjustable Bends A range of fittings makes the system customizable, accommodating any kind of tricky configuration. Users can achieve



### Solar Cable Management: The Ultimate Guide

Read our solar cable management guide, discussing how to maximize R.O.I, reduce costs & harvest more energy with Solar Snake Max(TM).

100G QSFP28 to 4\*25G SFP28 AOC  
QSFP-4X25G-AOC\*\*M

10G SFP+ AOC  
SFP-10G-AOC\*\*M  
1m 2m 3m 5m 7m 10m 15m 20m 25m 30m

25G SFP28 AOC  
SFP28-25G-AOC\*\*M  
1m 2m 3m 5m 7m 10m 15m 20m 25m 30m

100G QSFP28 AOC  
QSFP-100G-AOC\*\*M  
1m 2m 3m 5m 7m 10m 15m 20m 25m 30m

40G QSFP+ AOC  
QSFP-40G-AOC\*\*M  
1m 2m 3m 5m 7m 10m 15m 20m 30m 50m

**AOC**  
10G 25G  
40G 10G



### Fiberglass Cable Tray 0° thru 90° Vertical Adjustable

Fiberglass - 0° thru 90° Vertical Adjustable Bends A range of fittings makes the system customizable, accommodating any kind of tricky configuration. Users can



## Aluminum Cable Trays for Solar Projects , Solar Cable Tray

Learn why aluminum cable trays are ideal for solar projects with durability, lightweight design & corrosion resistance. Contact us now for expert solutions.



### Cable Tray Technical Guide A practical guide to product selection and

In designing supports for a cable tray system, consideration should be given to the loads associated with future cable additions and any additional loading that may be applied to the cable tray system (e.g.,

### Cable Tray Management for PV projects

Cable tray management in the design phase of a photovoltaic rooftop project comprises defining the path from solar panels to the invertors. This path will be



### Cable tray system K<sup>2</sup>

The cable tray system K<sup>2</sup> (hot press moulding) offers the widest and most complete range of the GRP market. Its unique interlocking and self-adjusting couplers



## Cable Tray Technical Guide A practical guide to product selection and

Cable Tray Technical Guide A practical guide to product selection and installation This guide for engineers and installers has been developed by ABB as a practical reference regarding cable tray



## Cable & Tray Selection Guide: Expert Insights

The Ultimate Guide to Cable & Tray Selection Choosing the right cable and tray solutions is critical for efficient power distribution in industrial and renewable

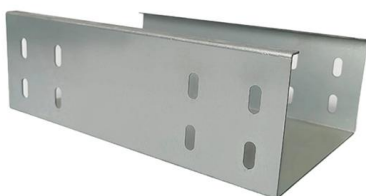
## Maximize Efficiency with the Right Cable Tray System

Learn how to select, install, and maintain optimal cable tray systems for industrial and photovoltaic applications.



## Snake Tray® Solar Panel Cable Management Tray

Change directions easily by bending Solar Snake Tray with your own two hands. The variations of 407 series Solar Snake Trays have been designed specifically to





## Tray Bends , Levac Supply Limited

Tray bends are the elbows of cable tray which change the direction of the tray routing. Cable Tray Flat Bends of 45° and 90° bends are available for light, medium and heavy duty cable tray systems. An

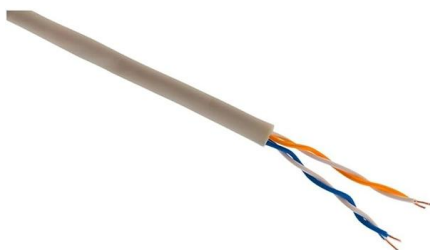


## High-Quality Cable Tray Systems , Light, Medium

Complementing our trays, we provide a comprehensive array of accessories - including couplers, 90-degree bends, 45-degree bends, tee bends, crossovers,

## What Should You Consider When Selecting a Cable Tray for Solar

In a solar power system, cable management is more than just organization--it's about safety, durability, and performance. Whether you're designing a rooftop solar PV system or a large-scale ground



## Solar Photovoltaic Cable Management: Best Practices

Learn best practices for supporting and securing direct current (DC) string wiring in solar photovoltaic (PV) systems, address concerns with plastic ties, and explore



**45° Vertical Elbow , Cable Tray Systems , PUPCO**

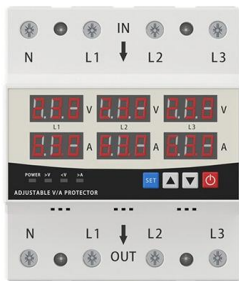
Discover our 45° Vertical Elbow for cable tray systems. Seamlessly transition between sections and fittings, reducing tray width. Contact us today!



**LED DISPLAY PANEL**

**CURRENT STATUS CLEARLY VISIBLE**

IT CAN CLEARLY SHOW THE CURRENT STATUS AND VOLTAGE STATUS, WITH EFFICIENT OPERATION AND RAPID RESPONSE.



**INTRODUCTION**

Standard Cable Trunk Horizontal Bend 90° Connection -Any other values of Radius can be arranged upon request -For Curved type add ( C ) in the end of code -Any further dimension and specs can be

**Solar Cable Management , Snake Tray**

Snake Tray manufactures solar cable management systems that provide proper air flow for cables, while lowering installation costs and keeping up with code



**Cable routing , OBO**

Our product range comprises closed cable tray, wide span tray and mesh cable tray systems. With the mounting adapter, you can fix mesh cable trays to the OBO

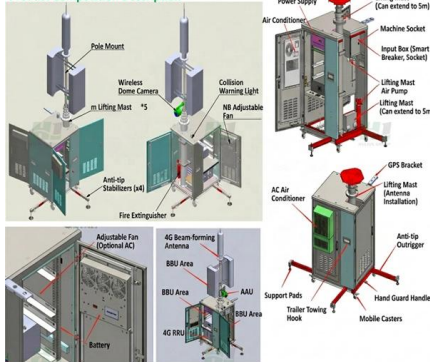


## rbt-solar\_katalog\_digital\_ver2

Cable trays with widths of 60, 100, and 200 mm complement our photovoltaic structures, forming a complete system designed for the construction of photovoltaic installations mounted on roofs,



### Product Composition Description



## CABLE TRAY SYSTEMS GUIDE

The Ladder Tray features light, rugged, tubular steel construction. It is designed for mechanical support and strain relief in long runs of cable and creates a smooth gradual bend for cable. Rail and stringer

## How to Choose Solar Cable Tray for Photovoltaic Energy

A suitable tray system reduces the thermal load on DC cables, prevents corrosion in harsh climates, supports long spans



## Contact Us

For datasheets, pricing, or custom high-speed optical interconnect solutions, please visit:  
<https://www.syropy.com.pl>