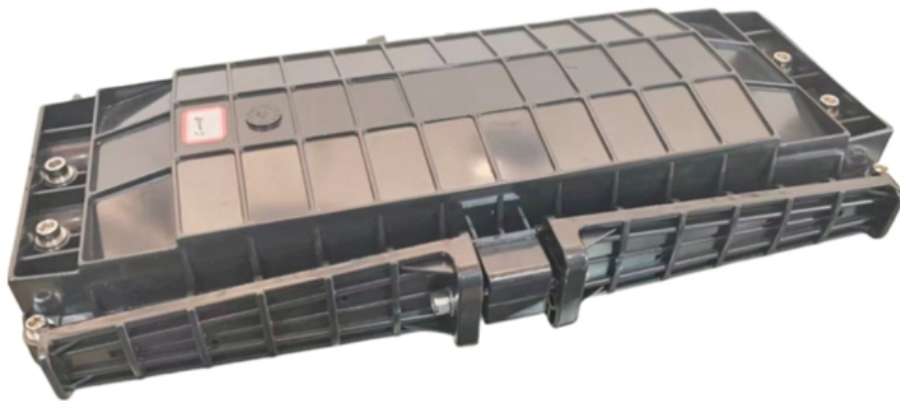


Phase Angle of Relay Protection Tester





Phase Angle of Relay Protection Tester



How Does A Phase Angle Relay Work

Electrical Test Equipment Power Station To Plug
Megger Finding The Direction In Directional
Overcur Relays Valence Electrical Training
Services What

How to Measure Phase Angles with a Phase Angle Meter

Do you understand how your relay measures phase angles? Can you confidently performing load checks with a phase angle meter? Get the basics!



Operation, maintenance, and field test procedures for

Operation, maintenance, and field test procedures for protective relays and associated circuits (photo credit: Omicron) The protection circuits



Testing Phase Angle Relationship for Transformer Differential Relay

The phase angle of the current going into the relay is 180 degrees out of phase with the current going out of the relay. When I read currents I turn my test plug over so that the angles are the



Use Sequence Components To Make Sure Your Relay

Did you know that a relay connected to, or set with, the incorrect phase rotation can disable its higher level functions? Did you know that the wrong phase



End-to-end testing for line differential protection

Relay manufacturers use various methods to measure and compare currents in differential protection relays: magnitude comparison, phasor comparison, phase



Protection Relay Tester

Smart Multi-phase Relay Protection Tester is a new generation of intelligent relay protection test equipment for Substation ABB, Siemens, SEL, Schneider, NR





How to test the action time of relay protection tester

Phase angle between voltage and current? :
Make sure the phase angle between voltage and current is within the protection action area.
Usually, the maximum sensitive angle is selected for

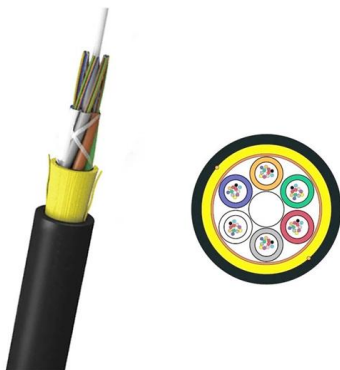


Q and A: Protective relay testing

Q: Why is it necessary to perform harmonic block tests on transformer differential relays? A: Differential protection issues an instantaneous trip if the current recorded by CTs on the primary

PROTECTIVE RELAY TESTING

A comprehensive testing program should simulate fault and normal operating conditions of the relay. Acceptance testing, commissioning, and startup will include control power tests, current transformer



Three Phase Relay Protection Tester

Our Three Phase Relay Protection Tester is designed for the precise testing and calibration of protection relays in power systems. This versatile tester is essential for ensuring the accuracy and reliability of



GF211B MULTI-FUNCTION DOUBLE CLAMP DIGITAL PHASE

It can measure not only alternating voltage, but also alternating current. Its important function is to measure phase angle between two voltages, between two current or between voltage and current.

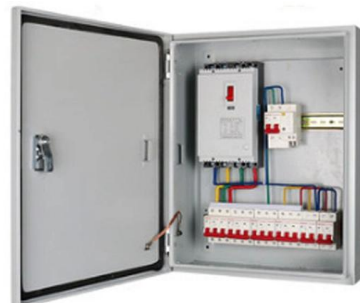


PW41i Protective Relay Test Set

PW41i is a type of relay tester controlled by SCM. Colored LCD with local control system makes PW41i portable, and easy to use. The local software embedded in PW41i is called PowerTest Cut.

Protective Relay Protection Element Tests

25 Sync Check Relay A Synchronizing or Synchronism-Check Device operates when two AC circuits are within the desired limits of frequency, phase angle, or voltage, enabling or causing the



Fundamentals and Improvements for Directional Relays

a typical electromechanical phase directional relay. The directional element is "quadrature" polarized, meaning th A-phase relay uses A-phase current and VBC voltage. The relay



How to Test Protective Relays Correctly

How to Test Protective Relays Correctly Usually I try to keep my posts as simple and practical as possible. This post is a little different because I will discuss how I



The Relay Testing Handbook: Generator Protection Relay Testing

Generator relay testing isn't hard, but you need to understand the basics first. You should not read this book if you haven't read and applied The Relay Testing Handbook: Principles and Practice, and/or

Phase Angle Meter (646)

It displays the angular relationship between one voltage and one current, ideal for power factor testing, switchgear verification, and generator synchronization.



How to Perform an In-Service Protective Relay Meter Test

The "How to Measure Phase Angles with a Phase Angle Meter" post showed you how important the reference is when measuring AC systems. Remember that the



How to test 47 Phase unbalance protection in SEPAM relays:

Scenario No.1: Test the first issue in order to trip in phase rotation condition (worst unbalance condition). It is easy to test this scenario: you can inject V1, V2, and V3 in a normal phase angle with nominal

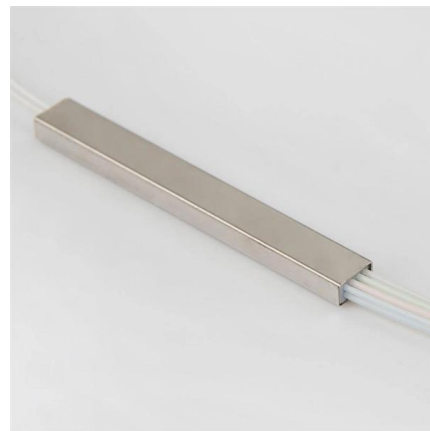


The Relay Testing Handbook: Principles and Practice

The complete handbook combines basic electrical fundamentals, detailed descriptions of protective elements, and generic test plans with examples of real-world applications, enabling you to confidently

Sync Check Relay (25) Fundamentals and Testing

Relay protection settings should match the most recent coordination and arc-flash study or engineered setting files. This information is often furnished



Cable structure

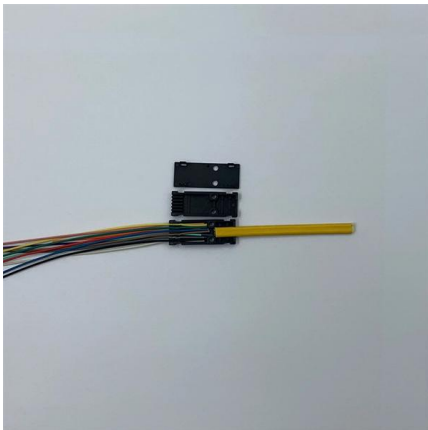
Six Phase Relay Protection Tester

Our Six Phase Relay Protection Tester is an advanced and versatile tool designed for thorough testing and calibration of protection relays in complex power systems.

Essential Guide to Calibration of Protection Relays



Calibration of protection relays is critical to the reliability and safety of electrical power systems. This guide is designed to inform engineers, power



Relay Testing Procedures , Delgado Relay Protection Reference

During this phase, engineers also ensure that the relay's communication channels, if applicable, are functioning correctly. Testing for Fault Conditions: Once the functional testing is

Protective Relay Test System

The ideal system for testing and calibrating protective relays using traditional test techniques or applying realistic power system simulations. Easily test single overcurrent relays to multi-terminal end-to-end



Protection relay testing and diagnostic solutions

Verify protection schemes during commissioning and maintenance to ensure reliable system operation. Megger's relay testing solutions help prevent



A True Understanding of R-X Diagrams and Impedance

ABSTRACT This paper discusses 10 myths or common misunderstandings about R-X diagrams and impedance relay characteristics.



Contact Us

For datasheets, pricing, or custom high-speed optical interconnect solutions, please visit:

<https://www.syropy.com.pl>