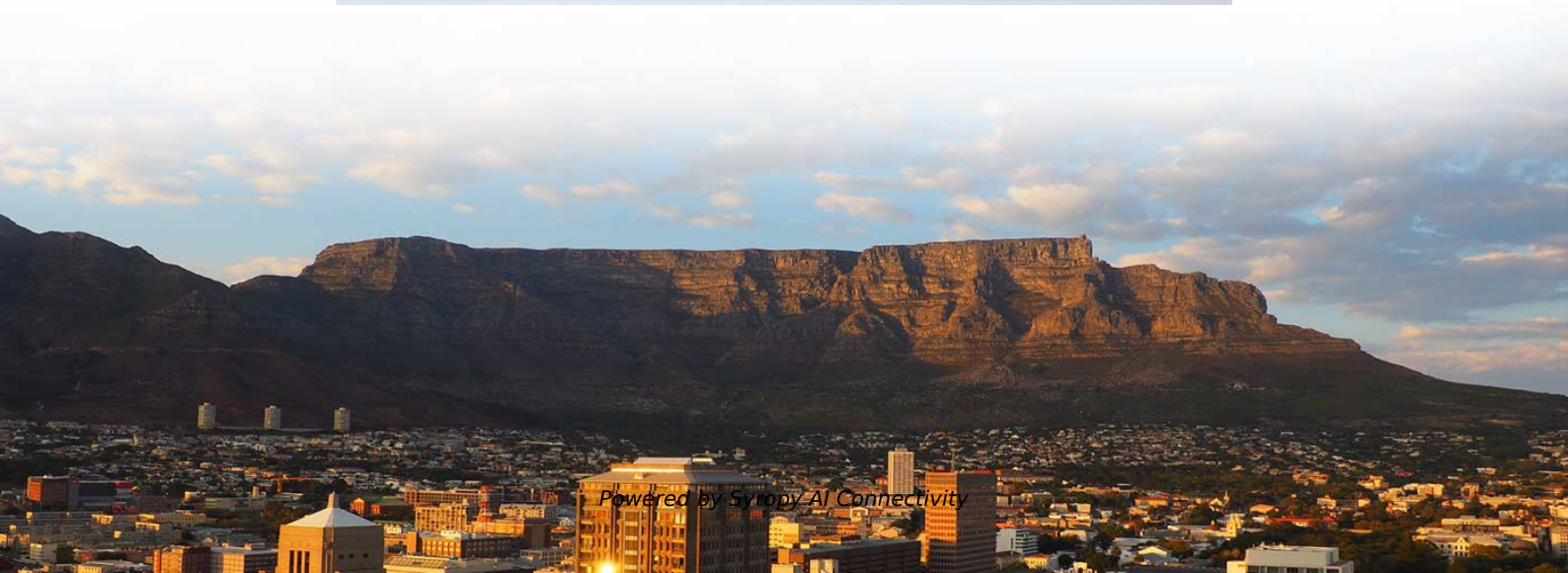
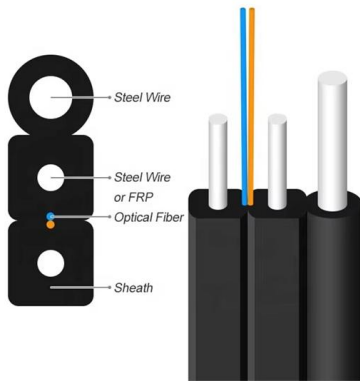


Permissible values for secondary distribution boxes





Permissible values for secondary distribution boxes

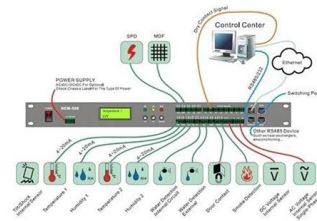


Typical Limiting Values of Electrical Substation Equipments

On this page you can find permissible limits for different equipment's which are part of a power distribution electrical substation. Also where available reference to the international standard is also

Three-Tier Power Distribution System in a Newly Constructed

Learn about the three-tier power distribution system (main secondary tertiary distribution boards) in a new residential area including their roles connections and safety measures for 0.4kV power supply.



How to Choose the Right Distribution Box?

Find out how to choose the right distribution box for your needs! Learn about sizing, safety standards, essential features, and all factors.

910532-3_EN

Primary distribution between the Normal/Backup Main Switchboards and the Secondary Distribution Switchboards is via type XVB-F2 cables, installed in new cable trays.



Secondary Distribution Boxes

For building owners, architects, construction managers, facilities engineers, and network administrators alike, ACS modular zone distribution systems are the intelligent choice. The ACS Intelligent



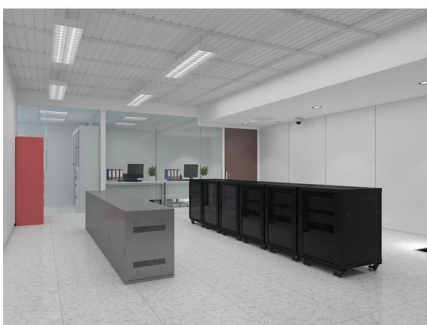
Standard Values for Electrical Systems , PDF , Electric Power

It specifies standard voltages for single-phase and three-phase systems, as well as permissible voltage limits and frequency maintenance guidelines. The document serves as a reference for ensuring



Key Material Requirements for Distribution Box

Learn the key material requirements for distribution box, Discover how the right materials ensure long-lasting performance and safety.





The Complete Guide to Distribution Box: Installation, Types & More

Quality distribution boxes represent a wise investment that pays dividends through improved safety, reduced maintenance costs, and enhanced system flexibility. As electrical demands

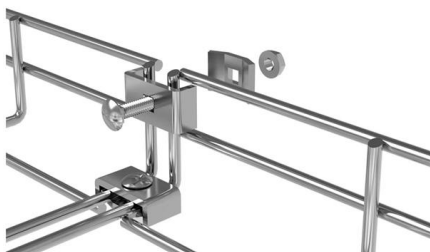
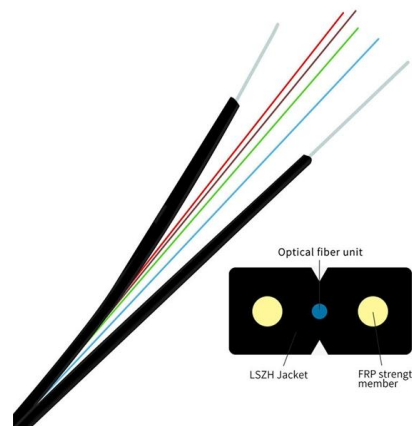


Installation requirements for distribution boxes

Distribution boxes shall be made of non-combustible materials; open distribution boards may be installed in production places and offices with low electric shock risk; enclosed cabinets shall

The Meaning and Function of Primary, Secondary, and Tertiary

Designed for local control with strict safety standards, such as "one device, one circuit breaker, one residual current device, and one box." May include both fixed and portable boxes, ensuring individual



The Ultimate Guide to Distribution Box Types

Discover the key types of distribution boxes with NUOMAK's comprehensive guide. Learn about Main Distribution Boards (MDB), Consumer Units, Transfer



Electrical Distribution Fundamentals Design Guide Data Bulletin

For both the primary and secondary windings the magnitude of the line-to-line voltage is equal to the magnitude of the line-to-neutral voltage multiplied by $\sqrt{3}$.

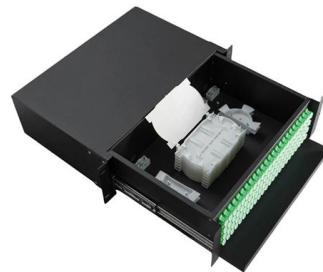


Cautions and Requirements for Installation of

Distribution box is a low-voltage distribution device which assembles switchgear, measuring instruments, protective appliances and auxiliary equipment in a closed

A comprehensive understanding of distribution box

Introduction Distribution boxes are at the heart of safe and organized electrical systems--whether in residential, commercial, or industrial settings. But



The difference between the first, second, and third levels of

What do the primary, secondary, and tertiary boxes of a distribution box mean? This is a relative issue. Let's make a hypothesis: a newly built residential area introduces a 10kV incoming line



Distribution Box Guide: Types, Components & Solutions

Understand distribution boxes (DB boxes) in 5 minutes. Learn about types, components, functions, and uses. Find the perfect DB box for your needs.



Central Electricity Authority

Central Electricity Authority - CEA

A Definitive Guide To Distribution Boxes

The distribution box acts as the center of power distribution, distributing electricity to all connected devices. A distribution box, also known as a distribution board, panel board, breaker



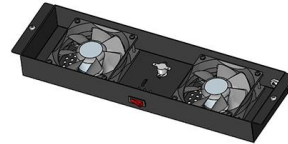
Design requirements and standards for low voltage

Key Takeaways Always prioritize safety by following NEC and IEC standards for low voltage distribution boxes. Check voltage and current ratings to



How to Improve the Installation Quality of Distribution Boxes

Learn key methods to enhance distribution box installation quality, including location, height, wiring, and safety compliance.



Understanding Distribution Boxes: Your Guide to Power

Weatherproof Distribution Boxes These serve specific outdoor purposes, with rain, dust, and extreme temperatures sealed shut, protecting any

Saudi Electricity Company

This specification defines the minimum fabrication, testing, inspection, and performance of meterbox with steel enclosures including all its components designed for outdoor installations, intended to be used



Secondary Distribution Box

The Secondary Distribution Box (SDB) receives power from Main Power Distribution box via an extender cable and provides a central power distribution to feed



Complete Guide For Distribution Boxes Types

Distribution boxes, also known as electrical distribution boards or panels, are pivotal components in electrical systems, ensuring the safe and organized distribution of



Latest Requirements for Distribution Box Installation under the US

The latest NEC updates prioritize adaptive solutions for modern energy demands. With homes now packing solar arrays, EV chargers, and smart-home systems, distribution boxes work

Power Distribution Boxes Explained Simply

Discover the essentials of a Power Distribution Box--how it works, key types, benefits, and tips to ensure safe, efficient electrical power management.



Requirements And Specifications For Installation Of

In flammable and explosive environments, explosion-proof distribution boxes should be selected and explosion-proof treatment should be carried out.



IS 2026-3 (2009): Power Transformers Part

Standardized values of U_m are listed in tables 2 to 4. The value to-be used for a transformer winding is the one equal to, or nearest above, the rated value of the winding. NOTE 1 Single-phase



Contact Us

For datasheets, pricing, or custom high-speed optical interconnect solutions, please visit:
<https://www.syropy.com.pl>