

Permissible values for fiber optic cable connectors in an ODN network





Overview

The maximum permissible optical power attenuation between OLT optical ports to ONT input is 28dB, which is by utilizing the so-called Class B optical network elements. ODN Class A, B, and C are differentiated mainly on the optical transmitter power output and bit-rate. So how do you determine acceptable loss?

When testing fibre optic cabling, determining acceptable loss is. The estimate, called a "loss budget" is calculated using typical component losses for. You can either compare this loss value to the application requirement or calculate the expected loss based on how many connectors and splices are in the link along with the length of. The Optical Distribution Network (ODN) is the passive fiber infrastructure that connects the central office OLT to each subscriber in FTTH, FTTB, and FTTO deployments. 9807 (XGS-PON), and IEC 60794 cable standards, the ODN forms the physical optical path responsible.



Permissible values for fiber optic cable connectors in an ODN network

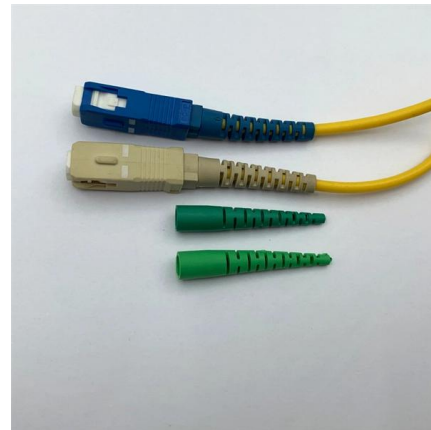


The FOA Reference For Fiber Optics

After fiber optic cables are installed, spliced and terminated, they must be tested. For every fiber optic cable plant, you need to test for continuity and polarity, end-to

Understanding Fiber Loss: What Is It and How to Calculate It?

This post introduces the main fiber loss types, the calculation process of link loss including fiber attenuation, connector loss, and splice loss, calculating power budget and calculating



ODN Optical Distribution Network , What Is It? How It Works?

What is ODN? ODN is an optical distribution network. It is an optical transmission physical channel between OLT and ONU. The main function is to complete the two-way transmission



Fibre Optic Cabling Loss Limits Explained - Trend Networks

Learn about fibre optic cabling loss limits & how to calculate them. Gain insights from experts on acceptable loss for cabling projects & explore the standards.



What is OLT, ODN, ONU and ONT in FTTH Network?

Its reach is 20 km or farther. Within the ODN, fiber optic cable, fiber optic connectors, passive optical splitters, and auxiliary components collaborate



Understanding Passive Optical Network Testing

Optical test heads can automatically monitor and locate problems in PON networks. This system checks for fiber continuity from the CO to the customer and is the only way to know whether problems stem



PON Network: Understanding OLT, ONU, ONT and ODN

PON means Passive Optical Network and A PON system can be fiber-to-the-curb (FTTC), fiber-to-the-building (FTTB) or fiber-to-the-home (FTTH). The PON



Guidelines On What Loss To Expect When Testing

Calculating a loss budget for a cable plant involves estimating all the component losses - fiber, splices and connectors - and summing them up. Go here for more



Attenuation In Optical Fiber, How to Calculate Fiber Loss?

In fiber network installation, accurate measurement and calculation of attenuation in optical fiber is a very important step to verify network integrity and ensure network performance.

ODN: Optical Distribution Network Explained

Introduction An Optical Distribution Network (ODN) is the passive fiber infrastructure connecting Internet Service Providers (ISPs) to end-users in Fiber



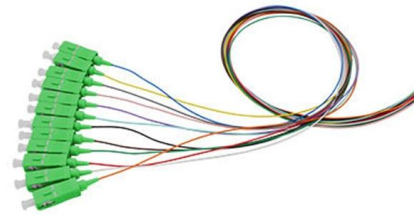
Passive Optical Network (PON): Attenuation and

In the PON (Passive Optical Network) system, calculating optical attenuation and transmission distance can be a tricky thing to deploy FTTH.



The Optical Distribution Network (ODN): The Unsung

? Key Takeaways The Optical Distribution Network (ODN) is very important for fast internet at home. It links your service provider to your house



Understanding ODN Architecture in Fiber Access Networks

What determines the maximum distance of an ODN? The distance is limited by the optical budget, including fiber attenuation, splitter loss, connectors,

Handbook Optical fibres, cables and systems

Because cut-off wavelength depends on the length and bends of the fibre, as well as its strain condition, the resulting value of cut-off wavelength depends on whether the measured fibre is configured in a



The Comprehensive Guide to PON Architecture: Mastering OLT,

Comprehensive guide to Passive Optical Networks (PON), covering OLT, ODN, ONU/ONT, GPON/XGS-PON/NG-PON2 standards, deployment strategies, and FTTH network



Optical Loss & Testing Overview , Kingfisher International

The connector specification will show the average value, which will often not be achieved. Connector loss is better understood by using a statistical mean and



How to calculate the full attenuation of ODN fiber optic link

FTTH ODN optical fiber link loss mainly calculates the active connector loss, splitter loss, fixed connection loss, drop cable downstream attenuation, additional loss.

Fiber Optic Cabling Loss Limits Explained - Trend

Using an optical power meter and light source or OLTS (Optical Loss Test Set), Tier 1 Certification can be performed against industry standard limits



What is Optical Distribution Network?

As an experienced fiber network solution leader in the world, Sopto has deep understanding and rich experience in PON construction and provides series of ODN products, including ODF, FDT, FAT,



Fiber Optics Loss Budget Calculation , Fluke Networks

You can either compare this loss value to the application requirement or calculate the expected loss based on how many connectors and splices are in the link along with the length of the fiber link and



FTTH

The maximum permissible optical power attenuation between OLT optical ports to ONT input is 28dB, which is by utilizing the so-called Class B optical network elements. ODN Class A, B, and C are

Fiber Optic Cable Loss Testing Guidelines

The document provides guidelines for testing fiber optic cables, focusing on insertion loss tests and the importance of calculating a loss budget based on component



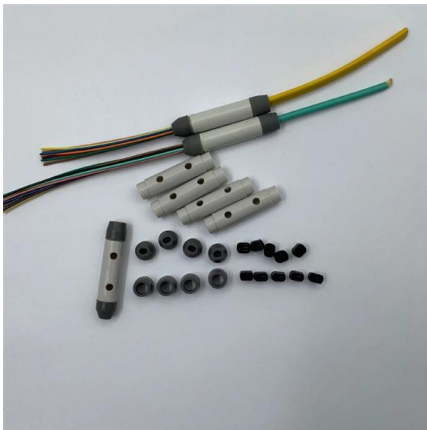
FTTH Network Maintenance Discipline is Key to Success

? This isn't just a messy fiber box. It's a ticking time bomb inside your access network. And let's be brutally honest: Your FTTH network is not fine if this exists anywhere in your ODN



Evolving Optical Distribution Network (ODN) Methodology

Hence to enable these, a strategy for managing fiber assets must be considered to avoid disruption to fiber broadband services. This white paper introduces an evolved methodology to manage FTTx

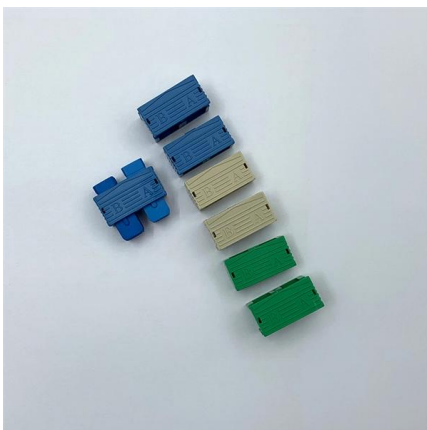


What Is an Optical Distribution Network (ODN)? - The Ultimate Guide

? Cost Optimization and ROI Frequently Asked Questions (FAQ) Conclusion: Building the Future of Fiber Access ? What Is an Optical Distribution Network (ODN)? An Optical Distribution

Defining ODN: Optical Distribution Network

Following this, the signals are routed through the network using passive optical components (like connectors, patch panels, and splice enclosures) to reach appropriate distribution points.
Distribution



MAJOR COMPONENTS OF FIBER TO THE HOME

ODN (Optical Distribution Network) ODN is a FTTH fiber optic cable network based on PON equipment. Its role is to provide optical transmission



ABC of PON: Understanding OLT, ONU, ONT and ODN

Optical Distribution Network (ODN) ODN, an integral part of the PON system, provides the optical transmission medium for the physical connection of the ONUs to the OLTs. Its reach is 20



FTTH BOOK-TYPE TERMINAL BOX

Sleek Design. Reliable Connectivity.



COMPACT &
DURABLE

EASY
INSTALLATION

ITU-T RECOMMENDATION

The ODN considered is based on point-to-multipoint tree and branch option. This Recommendation concentrates on the fibre issues, the copper issues of hybrid systems are described elsewhere e.g.

Fibre Optic Cabling Loss Limits Explained - Trend

Using an optical power meter and light source or OLTS (Optical Loss Test Set), Tier 1 Certification can be performed against industry standard limits



Contact Us

For datasheets, pricing, or custom high-speed optical interconnect solutions, please visit:

<https://www.syropy.com.pl>