

Performance of Composite Cable Trays

Pre-Terminated Patch Panel

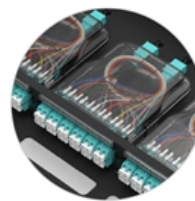
-  Multi-application support
-  Flexible configuration
-  Modular design



Multi-functional Sliding Patch Box, Modular



Modular Sliding Patch Box



Sliding Patch Box, Modular



Overview

This article sets out a direct, data-backed comparison of FRP and GRP cable trays against hot-dip galvanised steel, drawing on independent research and published lifecycle cost modelling, to help engineers and procurement teams make a more informed specification decision. Composite cable trays are increasingly specified in environments where long-term reliability matters more than initial cost. They are not a universal replacement for steel or aluminum systems, but in the right conditions, they solve problems that metal trays struggle to address. Mita Flex relates to our newest range of FRP/GRP pultruded cable management solutions, including. FRP cable trays offer corrosion immunity, 50% faster installation, and EMI transparency. We cover specifications, standards compliance, and application guidance for engineers.



Performance of Composite Cable Trays



FRP Cable Trays : Indigrate Composites

At IndiGrate Composites, we design and manufacture FRP Cable Trays that combine strength, durability, and corrosion resistance to deliver unmatched performance in

Composite Cable Trays for Corrosive & Industrial Environment

Learn how composite cable trays reduce corrosion, improve safety, and lower lifecycle costs in demanding industrial environments.



CREO Composites - Advanced FRP & Carbon Fiber Solutions

Smart Cable Management, Built to Withstand the Elements EDGE TRAY by CREO Composites represents our advanced line of FRP (Fiber Reinforced Polymer) cable tray systems, developed in

FRP Cable Trays for Extreme Conditions

FRP cable trays for extreme conditions While designing a cable administration framework for your upcoming project, consider FRP/ GRP fiberglass cable trays instead of traditional materials. Non



Optimal design of a pultruded cable tray beam having a novel

An optimal design study is presented for a stiffened pultruded cable tray beam manufactured from carbon fiber-reinforced epoxy with a 55% fiber volume fraction, subjected to a



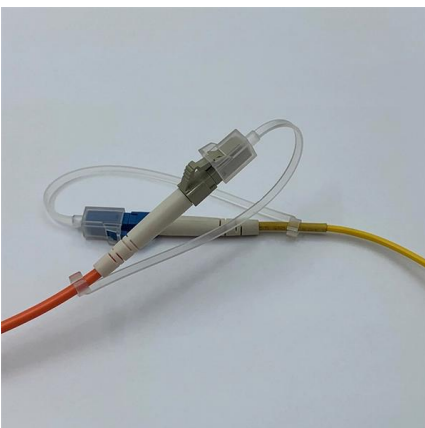
Cable Tray Technical Guide A practical guide to product selection and

Cable Tray Technical Guide A practical guide to product selection and installation This guide for engineers and installers has been developed by ABB as a practical reference regarding cable tray



Cable Tray and Conduit System Seismic Evaluation Guidelines

The evaluation team needs to understand those aspects of raceway construction that provide acceptable performance, those features that might lead to poor performance, and what acceptable





LADDER CABLE TRAY - Makewell Composite

With expert design and manufacturing capabilities, Makewell Composite is empowering industries to achieve exceptional performance and sustainability. As



FRP Cable Tray Systems: Specifications, Standards, and Engineering

FRP cable trays offer corrosion immunity, 50% faster installation, and EMI transparency. We cover specifications, standards compliance, and application guidance for engineers.

Mita Flex , Wibe group

The FRP/GRP cable ladders are light, yet strong and corrosion-resistant. They are designed to deliver high performance, and maximum load capacity with reduced



IP65 / IP67 Sealing Design



Reserved Bottom Mounting Holes



FRP Cable Ladders , Cable Tray

Composite Engineering FRP cable ladders are the perfect solution for cable management in harsh environments and minimal maintenance.



FRP cable tray/ladder for power industry , Unicomposite

Fiberglass cable trays are made of corrosion resistant fiber reinforced plastic, the design delivers weight reductions while maintaining strength and maximising

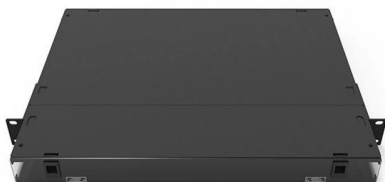


Non-metallic cable trays - performance at elevated temperatures

Non-metallic cable trays - performance at elevated temperatures Eaton's B-Line series fiberglass cable tray systems provide an economical support system with superior strength at room temperatures

CREO Composites - Advanced FRP & Carbon Fiber Solutions

Designed for modern industrial demands, our trays offer exceptional corrosion resistance, high strength-to-weight ratio, and fire-retardant properties--making them ideal for harsh or mission-critical



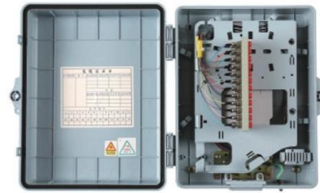
Composite cable tray

Cable management system The FRP cable tray is used for its outstanding advantages and durability in hard industrial environments than traditional



Premium Cable Tray Composites

Discover high-performance cable tray composites offering superior corrosion resistance, lightweight design, and exceptional durability for industrial cable management applications.

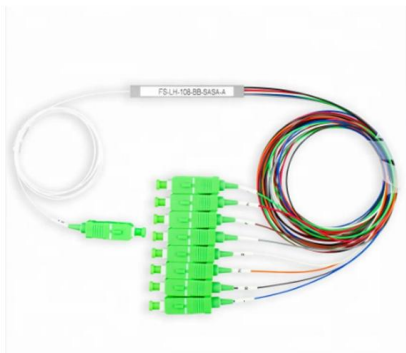


Plexxe Composite

Plexxe Composite instrumentation tray is channel type & design for light loads. They are available in solid as well as ventilated construction. Plexxe's Cable tray is

Composite vs Galvanized Cable Trays: Key Differences

Compare composite and galvanized cable trays to choose the right system for corrosion resistance, load, fire safety, and lifecycle cost.



FRP Cable Tray Types and Its Applications

Composite FRP Cable Tray: Composite trays may combine FRP materials with other materials like metals or plastics to achieve specific performance requirements such as enhanced



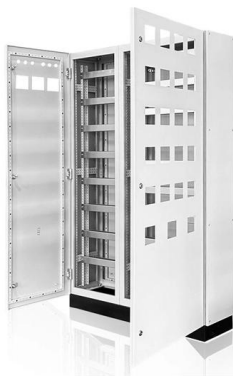
Cable Tray Structures: Smarter Design for Better

Discover how optimizing cable tray structures leads to lighter designs, faster installs, and big savings. Learn about new materials, smart tech, and



Fiberglass (FRP) Cable Tray for Extreme Conditions

Enduro cable tray and cable ladder sets the industry standard for high-quality fiberglass cable tray. Our FRP cable tray is extremely durable.



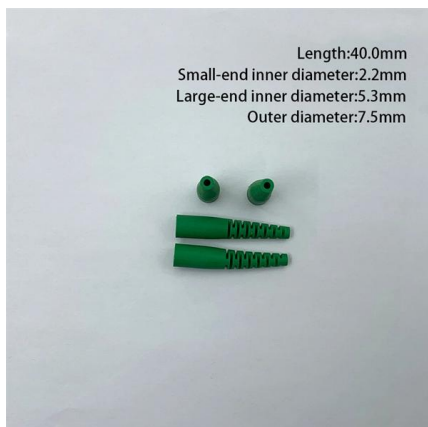
Composite Cable Trays for Corrosive Environments

In contrast, galvanized steel cable trays rely on a zinc coating that can wear off over time, leaving the steel exposed to rust. Composite trays are ideal for harsh or chemically aggressive



PERFORATED CABLE TRAY

FRP Perforated Cable Tray is a lightweight, corrosion-resistant, and durable solution for managing cables in various industries. The perforated design allows for easy



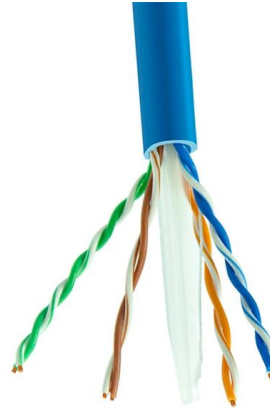
Length:40.0mm
Small-end inner diameter:2.2mm
Large-end inner diameter:5.3mm
Outer diameter:7.5mm

FRP and GRP Cable Trays vs Steel:



Performance, Cost and Lifecycle

GRP cable trays are approximately one third the weight of equivalent steel sections (Aeroncomposite, 2024). GRP sections of up to 70% lower mass than steel have been documented



What are the characteristics of composite cable tray?

3 sulation performance: the composite material itself has good insulation performance, and the composite cable tray can isolate and protect the cable and improve the electrical

Composite Cable Trays for Corrosive & Industrial Environment

Need Help Selecting the Right Composite Cable Tray? Choosing composite cable trays isn't just about material--it's about matching real operating conditions, load requirements, and long



Contact Us

For datasheets, pricing, or custom high-speed optical interconnect solutions, please visit:
<https://www.syropy.com.pl>