

# Performance Comparison of 48-core Intelligent Patch Panels vs Copper Cables vs Fiber Optics





## Performance Comparison of 48-core Intelligent Patch Panels vs Cop

---

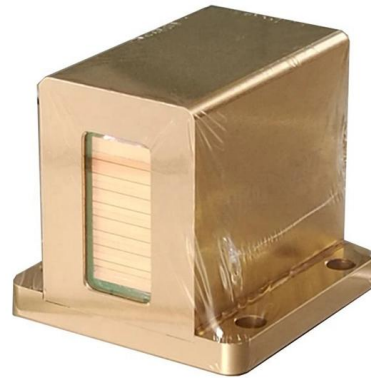


### Pre-Loaded Copper Panels

Product Number: CAT6A DataConnect Panel 48P  
DCAPPF2U48-CAT6A DataConnect Patch Panel,  
UTP, 48 Port

### SmartPatch(TM) Fiber LC Pane

APPLICATION SmartPatch Fiber LC Panels enable the monitoring and recording of patching status for optical fiber networks. Intelligent panels communicate with and receive power from the SmartPatch



### Smart Patch Panels & Intelligent Infrastructure Management Guide

Smart patch panels bridge the gap. By embedding micro-switches, LEDs and RFID-tag sensing directly into each port, they elevate structured cabling from static asset to live dataset. Layer on Intelligent



### FS Community

Hier sollte eine Beschreibung angezeigt werden, diese Seite lässt dies jedoch nicht zu.



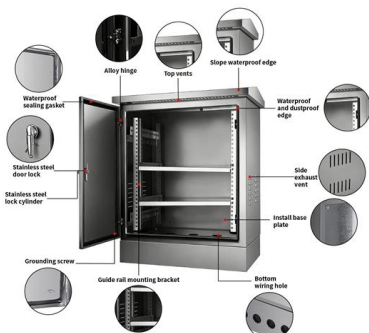
### Fiber Optic vs. Copper Cables: An In-Depth Comparison

In summary, fiber optic cables are the premium choice for high-performance, long-distance, and secure networking. However, copper cables still have their place,



### Copper vs Fiber: A Practical Guide to Choosing the

Learn the key differences between copper vs fiber cables. Compare transmission distance, power delivery, device density, and deployment scenarios



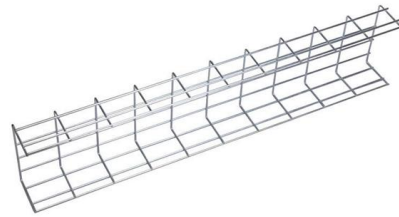
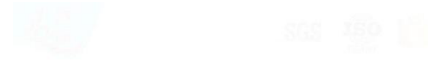
### 1U 48-PORT 19" COPPER PATCH PANEL

Lux's high density shielded and unshielded patch panel supports up to 48 x RJ45 keystone jacks in 1RU. The patch panels are available in unloaded modular type,



## Global IT Products & Network Solutions Provider , Black Box

Black Box provides cutting-edge IT solutions and technology products to businesses worldwide, ensuring innovative and reliable services for global digital transformation.



### iPatch PB

This document is for planning purposes only and is not intended to modify or supplement any specifications or warranties relating to SYSTIMAX Solutions products or services.

### Intelligent Patching (IP)

Intelligent patching and real-time monitoring with FUTURE-PATCH for patch panels in large networks Automated management and administration of network



### Fiber vs. Copper: Which Patch Cable is Right for You?

While both fiber optic and copper patch cables have their place in networking, fiber optic cables offer superior performance in many respects, particularly for high-speed,



## How Does a Copper Patch Panel Work? A Comprehensive Guide

Introduction Copper patch panels are integral components of network infrastructure, providing a centralised and organised way to manage and connect network cables. Understanding



### MapIT G2 Smart Copper Patch Panel

The MapIT G2 Smart Copper Patch Panels (SPP) are an industry first in intelligent infrastructure management. The panel features on board intelligence and a combination of LEDs and a backlit LCD

### Fiber vs Copper in Data Centers -- Cost, Speed & When to Use

The following table summarizes the key differences between fiber and copper data center cabling across the metrics that matter most to infrastructure engineers.



### CAT6A DataConnect Panel 48P

CAT6A DataConnect Panel 48P - DCAPPF2U48-CAT6A DataConnect Patch Panel, UTP, 48 Port CAT6A DataConnect Patch Panel, UTP, Flat, 48-Port, 2U (Preloaded) Request Quote Compare



### Cat5e 48 Port Unshielded 1U Copper Patch Panel

This Cat5e patch panel has high-density, ensuring the necessary performance for data communications networks and applications. This copper patch panel is



### Intelligent Patching Systems

Belden offers a wide variety of connectivity solutions for both copper and fiber. The copper portfolio features our innovative REVConnect connectivity, and our Fiber

### 48 Port Panel

48 Port Patch Panel from R& M. See our website for details, or contact us on 01908 951000 or 01373 858466 for more information.



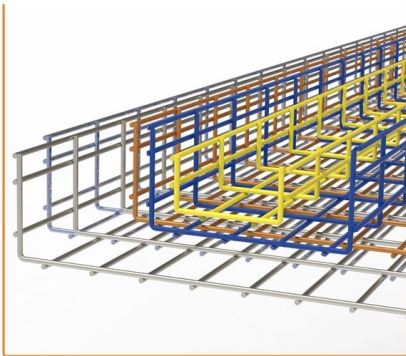
### Fiber vs Copper in 2025: When and Where to Use Each -

In this guide, we break down the latest performance data, deployment trends, and real-world use cases to help you decide between fiber and copper in modern enterprise environments.



## Intelligent Patching (IP)

According to a study by Gartner, the root cause for about 30% of all network failures can be found in the cabling or the physical connection. In order to contribute

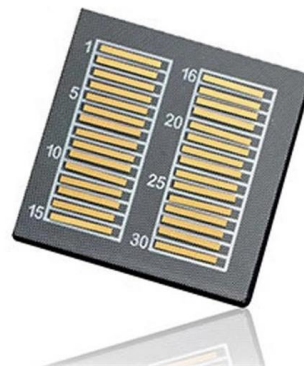


### Infinique Intelligent Patch Panel Cat.6A Shielded

Infinique's Intelligent Patch Panel Solution for Copper and Fiber Structured Cabling System provides an automated and versatile remote management of ICT infrastructure.

## Intelligent Copper Panels

CommScope offers Intelligent Copper Panels for automated infrastructure management solutions that enable you to monitor, manage and optimize your network connectivity in real time



### Fibre Optic Patch Leads vs. Copper Cables: A

In conclusion, the comparison between fibre optic patch leads and copper cables goes beyond just speed, distance, and reliability. While fibre optics

## Fiber vs Copper Comparison Tool



Compare fiber optic and copper Ethernet cables across speed, distance, cost, installation difficulty, and use case metrics. Use the interactive scenario selector to find the right medium for your specific



### Intelligent Patching , Infinique

Intelligent Patching Infinique's Intelligent Patch Panel Solution for Copper and Fiber Structured Cabling System.

### Full text of "NEW"

Full text of "NEW" See other formats Word . the, > < br to of and a : " in you that i it he is was for - with ) on ( ? his as this ; be at but not have had from will are they -- ! all by if him one your



### Cat6 48 Port Unshielded 2U Copper Patch Panel

This Cat6 patch panel has high-density, ensuring the necessary performance of existing and next generation data communications networks and applications.



## Copper vs Fiber vs DAC/AOC Cables , Data Center Interconnects

Compare copper, fiber optic, and DAC/AOC cables for data centers and enterprise networks. Choose the best SFP/QSFP solution based on speed, distance, and cost.



## Contact Us

---

For datasheets, pricing, or custom high-speed optical interconnect solutions, please visit:  
<https://www.syropy.com.pl>