

Passive Optical Devices and Equipment





Overview

A passive optical network (PON) is a telecommunications network that uses only unpowered devices to carry signals, as opposed to electronic equipment.



Passive Optical Devices and Equipment



Passive Fiber Optic Components: Key Types, Functions,

Passive fiber optic components play a vital role in various networks, ensuring stability, flexibility, and efficiency in multiple applications.

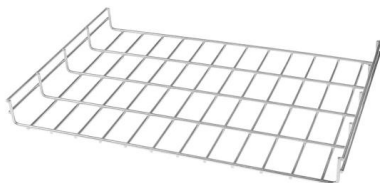
Passive Optical Network Market Size & Share Report, 2030

Adtran provides various passive optical network (PON) solutions specifically designed for the core network equipment. The company offers software-defined



Fiber Optic Passive Devices

This DVD serves as a primer on the various types of passive devices that have been developed for use in fiber optic communication systems. These purely optical components work by guiding, refracting,

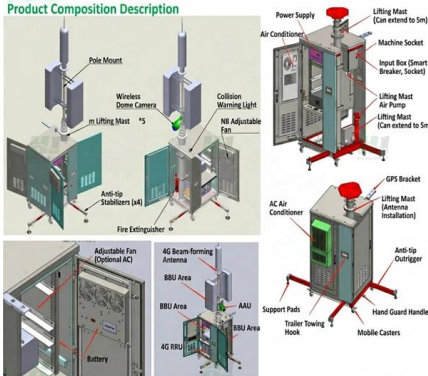


Passive optical network

A passive optical network (PON) is a fiber-optic telecommunications network that uses only unpowered devices to carry signals, as opposed to electronic equipment.



Product Composition Description



The latest passive optical network equipment for 2023

Passive optical network (PON) equipment on the market now Combo PON from Adtran offers service providers an efficient way to support both GPON and next-generation XGS-PON technologies

What Are Passive Optical Devices and Why Are They

Unlike active devices, which need electrical energy to amplify or regenerate optical signals, passive devices simply guide, divide, combine, or modify the light signals



Yole Group

Yole Group - Access daily business, market & technology updates in the semiconductor industry, our Analysts' Analysis and Presentations and more





What Are Passive Optical Components and How Do They Work?

Passive optical devices manage the flow of data through a fiber optic network. Optical splitters, also referred to as couplers, distribute a single incoming light signal into multiple output



Ordering information

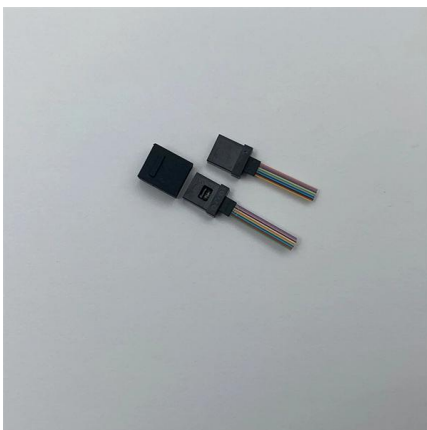
| NO. | 1 | 2 | 3 | 4 |
|--|--------------------|--------------------|---------------------|---------------------|
| Model | F50H1 | F100H1 | F150H1 | F200H1 |
| Product name | Patch Panel | Patch Panel | Patch Panel | Patch Panel |
| Illustration | | | | |
| SKU | 1 | 2 | 3 | 4 |
| Maximum number of cores | 16 | 192 | 288 | 384 |
| Product size (excluding module and adapters) | 482.0*208.7*63.2mm | 482.0*208.7*68.1mm | 482.0*208.7*112.2mm | 482.0*208.7*117.7mm |
| Standard color code | SA19005 | SA19005 | SA19005 | SA19005 |

Passive Devices , SpringerLink

The most relevant functionalities of passive devices are (i) physically connecting devices, (ii) splitting and coupling, but also (iii) separating and

What Are Passive Optical Devices and Why Are They

Conclusion Passive optical devices are the unsung heroes of modern fiberoptic infrastructure. Quietly performing their roles without power or fanfare, they enable



Passive Components Overview and Type Description

In fiber optic communication systems, passive components are indispensable devices that play a crucial role in managing and routing light



Chapter 10 Passive Devices

Fibre-optic networks have experienced tremendous growth during the last few years, starting with backbone or long haul networks over Metro nets and having reached the residential area more



The Definitive Guide to Passive Optical Network (PON): Architecture

1. Introduction: Unpacking the "Passive" Revolution in Network Connectivity Passive Optical Network (PON) stands as a foundational technology in the evolution of modern

Optical Passive Components and Their Applications

Optical passive components play a significant role in today's data networks and FTTH applications to establish effective fiber communication.



Passive Optical Devices

In the present chapter we discuss the following passive optical devices that are of great importance in integrated optic sensors :



passive optical device , Springer Nature Link

Note: Examples of passive optical devices are (a) fiber optic couplers, bundles, splitters, mixers, filters, and attenuators, (b) lenses, prisms, and all-optical multiplexers and demultiplexers,

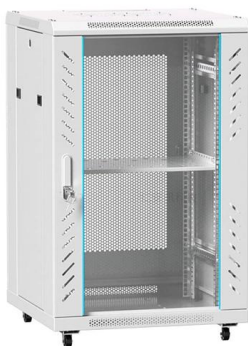


Chapter 9: Passive Optical Components , GlobalSpec

By Gerd Keiser Chapter 9: Passive Optical Components Overview In addition to fibers, light sources, and photodetectors, many other components are used in a complex optical communication network

The Definitive Guide to Passive Optical Network (PON): Architecture

Comprehensive guide to Passive Optical Network (PON) technology, covering GPON, EPON, XGS-PON, NG-PON2, and future 50G/100G standards. Learn PON architecture,



Passive Optical Networks (PON): Components and

Dive deep into the world of Passive Optical Networks (PON). Explore its key components, understand its structure, and discover the numerous



Passive Optical Device

Passive Optical Networks Another optical distribution architecture is known as the passive optical network (PON), in which common signals are split optically (usually at multiple levels) to feed multiple

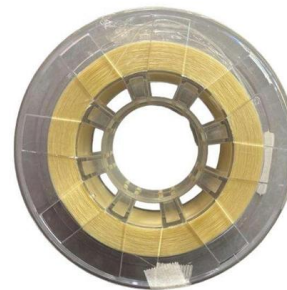


Passive Components Overview and Type Description

Unlike active components, passive components do not amplify signals or require power to operate, making them both cost-effective and reliable in

The Power of Light: What is a Passive Optical Network

What is a passive optical network (PON), and what are its speed, scalability, and cost-saving benefits for future-proofing high-performance



Passive Optical Devices , Springer Nature Link

In the present chapter we discuss the following passive optical devices that are of great importance in integrated optic sensors : 1 Beam expanders 2 Optical couplers and beam adders 3 Y-Junctions

What Is Passive Optical Networking (PON)?



Passive optical networking (PON), like active optical networking, uses fiber-optic cabling to provide Ethernet connectivity from a main data source to endpoints.



Chapter 10 Passive Devices

the topic of this chapter. The most relevant functionalities of pas-sive devices are i) physically connecting devices, ii) splitting and coupling, but also iii) separating and redirecting light travelling into opposite

What Are Passive Optical Components and How Do They Work?

Passive optical components play a fundamental role within this infrastructure. These engineered devices manage and direct light signals through a network without requiring an external



Thermography

Comparison with night-vision devices Passive vs. active thermography Advantages Limitations and disadvantages Applications Toggle Applications subsection

Passive optical network



Overview
Components and characteristics
History
Network elements
Upstream bandwidth allocation
Variants
Enabling technologies
Fiber to the premises

A passive optical network (PON) is a fiber-optic telecommunications network that uses only unpowered devices to carry signals, as opposed to electronic equipment. In practice, PONs are typically used for the last mile between Internet service providers (ISP) and their customers. In this use, a PON has a point-to-multipoint topology in which an ISP uses a single device to serve many end-user sites using a system suc



Introduction to Common Passive Components in Fiber

Fiber Optic Patch Cord: Fiber optic patch cords are essential for connecting optical devices, such as transceivers, switches, and routers, in a fiber optic network.

Passive Optical Device

In this chapter we will survey the key passive optical devices used in integrated photonic chips and compare the various approaches used to meet datacom application needs.



Contact Us

For datasheets, pricing, or custom high-speed optical interconnect solutions, please visit:
<https://www.syropy.com.pl>