

Parallel cable tray support dimensions and specifications

190X95X25mm





Overview

Of course, the exact specifications and definitions of DIN 4102 Part 12 of November 1998, such as rail height, tray widths, hole proportion, material thickness, max. maintain spacing or to keep cables in place when the tray is ect the minimum bend ra-dius for cables as they exit the bottom of the cable tray. A rung spacing of 6 to 9 inches (150 to 230 mm) is preferable when the cable tray cont d for instrumentation and control applications that require. All illustrations, descriptions and technical information included in this document are provided as indications and can cable trays are equivalent. The mechanical and electrical characteristics, tests, certifications, overall quality management, recommendations mentioned. Standard cable tray systems are manufactured in a range of widths, depths, and lengths designed to accommodate various installation scenarios, from compact commercial buildings to expansive industrial facilities.



Parallel cable tray support dimensions and specifications



Eaton

This guide details key factors to consider when designing cable tray systems for industrial and commercial applications.

CABLE TRAY SUPPORT SYSTEM

The uniquely designed Strut Channel is used to mount, support, and connect lightweight structural loads for supporting cable tray in Raised access floor system. These include Pipes, conduits, cable trays,



Cable Tray Support Spacing: Key Guidelines Explained

Explore the essential cable tray support spacing requirements for safe and efficient installations. Learn NEC guidelines for perforated, ladder, and wire



12-SDMS-06

4.1.2 The Metallic cable trays shall be manufactured in accordance with NEMA VE-1 standard and/or equivalent IEC standard. 4.1.3 Metallic cable trays shall be designed as a mechanical support for



Document DICOS

To install the cable tray supports, first find the required elevation from the floor to the bottom of the cable tray and establish a level line with a laser or a nylon string.



Cable Tray Size Chart and Selection Guide

Selecting the appropriate electrical cable tray dimensions is a critical decision that directly impacts the safety, efficiency, and longevity of any industrial or commercial electrical installation.



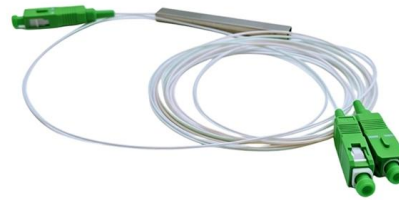
Cable Tray Support Systems, Supplier, India

We are Manufacturer, Supplier, Exporter of Cable Trays, Cable Tray Support Systems, Horizontal Bend for Cable Trays, from Pune, Maharashtra, India.



Cable Tray Size and Dimensions: How to Choose the

Learn how to calculate the perfect cable tray size and dimensions for your electrical project. This guide covers load capacity, fill ratios, and industry

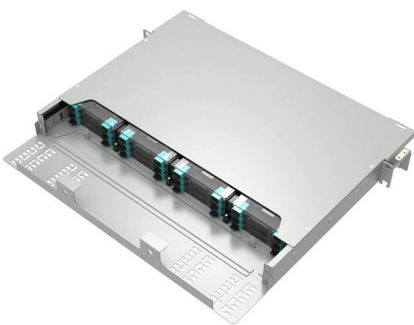


Cable Tray Sizes & Compliance with Australian Standards

Introduction: Why Cable Tray Compliance Matters Cable trays play a crucial role in modern electrical installations, providing

Technical Specification for Cable tray installation and cable laying work

1. Scope :- This specification covers the following major activities; - Fabrication and installation of Mild Steel (MS) support structure for Galvanized Iron (GI) Cable tray. - Installation of perforated GI Cable



Cable Tray Size Guide: How to Choose the Right Dimensions

Complete cable tray sizing guide with standard size chart, NEC calculation methods, and real engineering examples. Learn how to select the right cable tray dimensions for your project.

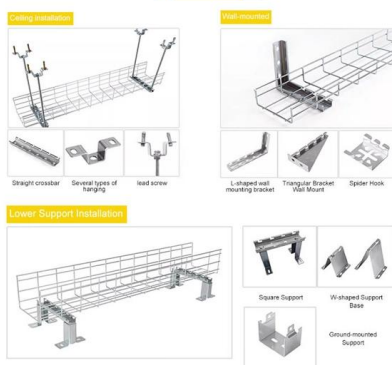


Guide to cable support systems

The load capacity of the cable trays according to the support width can be read off in the diagram using load curves - here, shown as an example for a cable tray with the tray widths 100 to 600 mm.



INSTALLATION METHOD



Cable tray manual

Some of these criteria include the required load that the cable tray must support, the distance between the cable tray supports, and ease of handling and installation.

Guide to cable support systems

The cable support lengths and fittings can basically be designed as cable trays, cable ladders or mesh cable trays, in which cables are routed. Fittings can, on the one hand, be used for horizontal or



Cable Tray Spacing Standards for Installation and Safety

Key Factors Impacting Cable Tray Spacing
Understanding cable tray spacing is key to meeting safety regulations and maintaining system



cable tray technical specifications

Armorduct cable tray systems are usually assembled using M6 roofing bolts particularly for couplers, fishplates and connection to supporting framework. It should be noted that independent testing has



Cable Tray Technical Guide A practical guide to product selection and

Cable tray length is selected based on the load to be supported, the distance between the supports (also referred to as the span), and handling and installation constraints.

Cable Tray Width, Dimensions and Specifications as per

Learn about cable tray width dimensions and specifications as per NEC standards. Understand types, sizes, materials, and installation guidelines for safe and



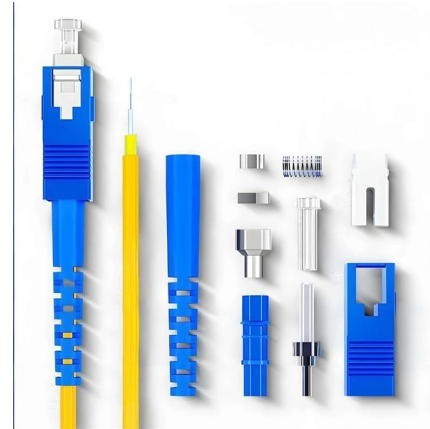
Cable Tray

Of course, the exact specifications and definitions of DIN 4102 Part 12 of November 1998, such as rail height, tray widths, hole proportion, material thickness, max.



Cable Tray Dimensions Guide: Standard Sizes, Tray

Explore standard sizes by tray type, understand width and depth limits, and see how to calculate and choose compliant cable tray sizes for real projects.



GUIDE CABLE TRAYS TECHNICAL

NEMA VE 1-2017 Specifies requirements for metal cable trays and associated fittings designed for use in accordance with the rules of Canadian Electrical Code, Part I and the National Electrical Code®

Best Practice Guide to Cable Ladder and Cable Tray Systems

Introduction This publication is intended as a practical guide for the proper and safe* installation of cable ladder systems, cable tray systems, channel support systems and associated supports.



Full cable tray systems specification document

B. Cable tray systems are defined to include, but are not limited to straight sections of [ladder type] [trough type] [solid bottom type] [channel type] cable trays, bends, tees, elbows, drop-outs, supports



CABLE TRAY SYSTEMS GUIDE

Some applications may require the cable tray to support the weight of a single, dead object in addition to the cable loads. Specifications typically require this to be applied at the midpoint of the span between



Cable Tray Technical Guide A practical guide to product selection and

SOLID-BOTTOM CABLE TRAY Providing additional cable protection, solid-bottom cable tray is sometimes preferred to support and protect numerous small instrumentation and control cables.

Cable Tray Dimensions and Specifications as per NEC

Many electrical systems employ cable trays. They route cables safely & efficiently. NEC defines minimum cable tray size & electrical installation



Cable Tray for PDF

Cable Trays have become an integral part of industrial and commercial construction by offering quick, economical and flexible solutions. Cable trays are capable of supporting all types of wiring such as



Contact Us

For datasheets, pricing, or custom high-speed optical interconnect solutions,
please visit:

<https://www.syropy.com.pl>