

# Palau Galvanized Cable Tray Specifications and Models





## Palau Galvanized Cable Tray Specifications and Models

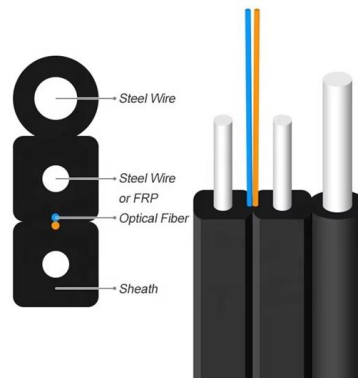


### CABLE TRAY SYSTEM

ICMS cable tray system including Fittings and accessories is manufactured With return flange in a standard length of 2.44Mtr and 3 Mtr, according to the following Specifications and standards:

### CABLE TRAYS

PVC cable tray can be installed in both commercial and industrial environments. - Damp, saline environments: gas, etc The specific characteristics of PVC combined with Legrand's

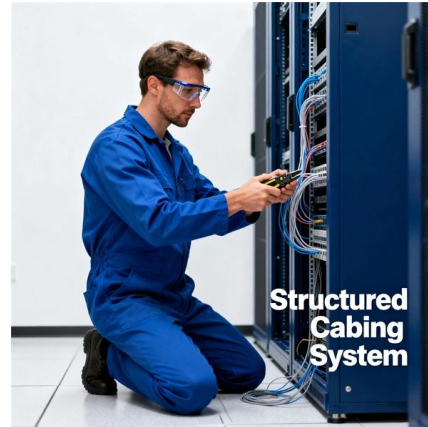


### Manufacturer Wholesale Price Large

Get manufacturer wholesale price large- span hot-dipped galvanized ladder cable tray \$1.5 at wholesale discount prices from a reliable verified supplier, Liaocheng

### Flextray wire basket section of NEMA cable tray

The Flextray™ system is a flexible, field-adaptable way to manage cables throughout your project. The tray can be cut and bent to the needs of the installer on the jobsite, allowing cable runs to be



### Cable Tray Systems

Durable and reliable cable tray systems providing premium performance in commercial and industrial applications, available in a variety of materials to suit your needs.

### Cable Tray Specifications and Sizes

The document specifies requirements for cable trays, including that they be fabricated from galvanized sheet steel in standard lengths and widths. It provides

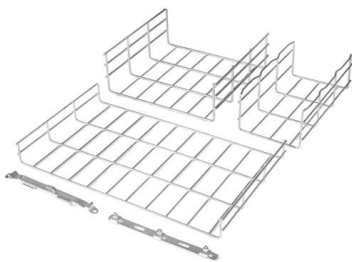


### Cable Tray Specifications and Sizes , PDF

The document describes specifications for different types of cable trays, including outside returned flanged cable trays in various standard sizes, light duty and

### Product Catalogue Cable Management

Delivering engineered solutions in cable management ABB manufacturers a comprehensive range of cable tray systems and solutions including cable ladder, perforated tray, channel tray and metal

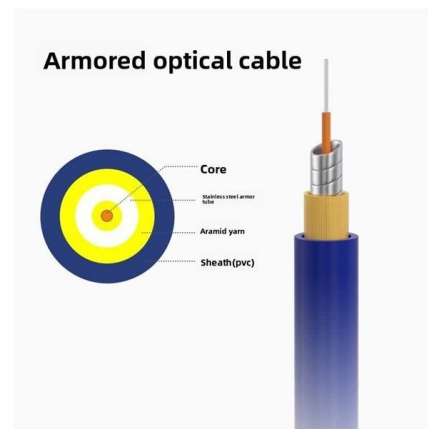


**Eurostrut Cable Trays , cable tray, cable route and**

Cable trays for industrial and marine use. Includes distribution trays, cable routes and NATO-type models. Request a quote directly via our webshop.

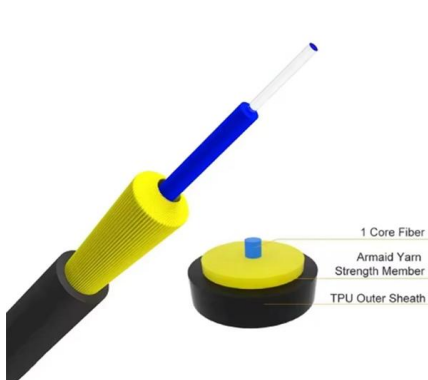
**STANDARD PERFORATED CABLE TRAY**

STANDARD PERFORATED CABLE TRAY Suitable for power and data cable routing in industrial, commercial, and infrastructure projects. Manufactured from high-quality GI, Hot Dip Galvanized,



**SKS Cable Tray Technical Data Sheet**

This document provides technical specifications for SKS cable tray systems. It lists various models of the SKS cable tray that differ in width, thickness, weight, and





## 12-SDMS-06

Carbon steel cable trays intended for installation in corrosive or highly corrosive environments with severe alkaline and acidic conditions shall be hot-dip galvanized zinc after fabrication.



## Cable Tray Specifications for Power Project

This document provides specifications for cable trays, supports, and conduits for a 800 MW supercritical thermal power project. It specifies that cable trays must be

## Patny Perforated Cable Trays (PCL) , Patny Systems

Perforated cable trays. Patny systems offer a wide range of perforated cable trays that are made of premium quality materials. Contact us today.



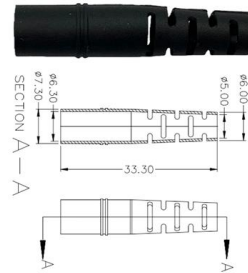
## PALAU CABLE TRAYS IN STOCK Manufacturer, Function, Datasheet

PALAU CABLE TRAYS IN STOCK Manufacturer, PALAU CABLE TRAYS IN STOCK Datasheet, PALAU CABLE TRAYS IN STOCK specifications, PALAU CABLE TRAYS IN STOCK PDF, pinouts,



## Monaco Distributors , Fibre Reinforced Plastic

Monaco Distributors , Fibre Reinforced Plastic



### Cable Tray Technical Specifications , PDF

The document provides a technical data sheet for cable trays including ladder and perforated types. It lists specifications for material, thickness, dimensions, loading



### Download Cable Tray Resources , ApexTray Official Site

Visit our Download Center to access 'Download Cable Tray' resources, including detailed manuals, CAD files, and specifications. Get all the essential tools and



### CABLE TRAY SYSTEM

'Cable tray' is a formed metal section for supporting cables. It not only simplifies cable & piping installation, but also enables later additions or modifications without much re-work.



### **cable tray technical specifications**

Armorduct cable tray systems are usually assembled using M6 roofing bolts particularly for couplers, fishplates and connection to supporting framework. It should be noted that independent testing has



### **Microsoft Word**

Cable Tray Types & Specification Perforated Cable Trays Features Moderate ventilation with added cable support advantage Thickness available 1.2mm, 1.6mm, 2.0mm, 2.5mm, 3.0mm.

### **Cable Tray Specification for Geothermal Plant , PDF**

This document provides specifications for a cable tray system to be installed at a geothermal power plant project in Indonesia. It outlines requirements for



### **Cable Tray Specifications and Sizes**

The data sheet provides specifications for standard cable trays and accessories. Standard cable trays are 2.5 meters in length with a maximum thickness



## Galvanized Cable Tray In Palau

Being one of the leading Galvanized Cable Tray Manufacturers in Palau, we work for customer satisfaction and design and deliver the standard and customized range accordingly.

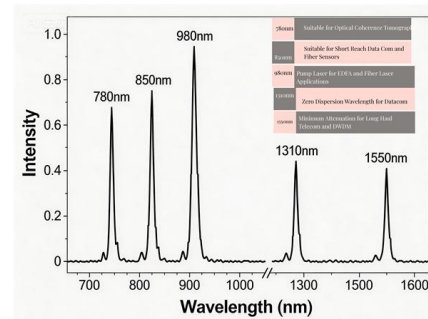


## CableTray Book English

Selection guide Ventilated trough Formed from a pre-punched sheet to produce a one-piece ventilated trough Available in aluminum, pregalvanized steel, hot-dipped galvanized steel and stainless steel

## cable tray technical specifications

All light duty tray and accessories do not have a return edge. Also light duty tray of widths 150mm and un-der do not require the use of couplers as they have a swage joint. For sizes that do require a pair



## Cable trays

We offer a wide range of cable tray systems to support tubing, electrical cables and instrumentation. Our cable trays are produced in fit for purpose materials like

## CABLE TRAY SYSTEMS GUIDE



Some applications may require the cable tray to support the weight of a single, dead object in addition to the cable loads. Specifications typically require this to be applied at the midpoint of the span between



### Technical Data Sheet Cable Tray System

The cable trays are manufactured from Pre-galvanized steel conforming to BS EN 10346:2009, and consist of both a Medium duty and Light Duty product range.

### GUIDE CABLE TRAYS TECHNICAL

NEMA VE 1-2017 Specifies requirements for metal cable trays and associated fittings designed for use in accordance with the rules of Canadian Electrical Code, Part I and the National Electrical Code®



## Contact Us

---

For datasheets, pricing, or custom high-speed optical interconnect solutions, please visit:  
<https://www.syropy.com.pl>