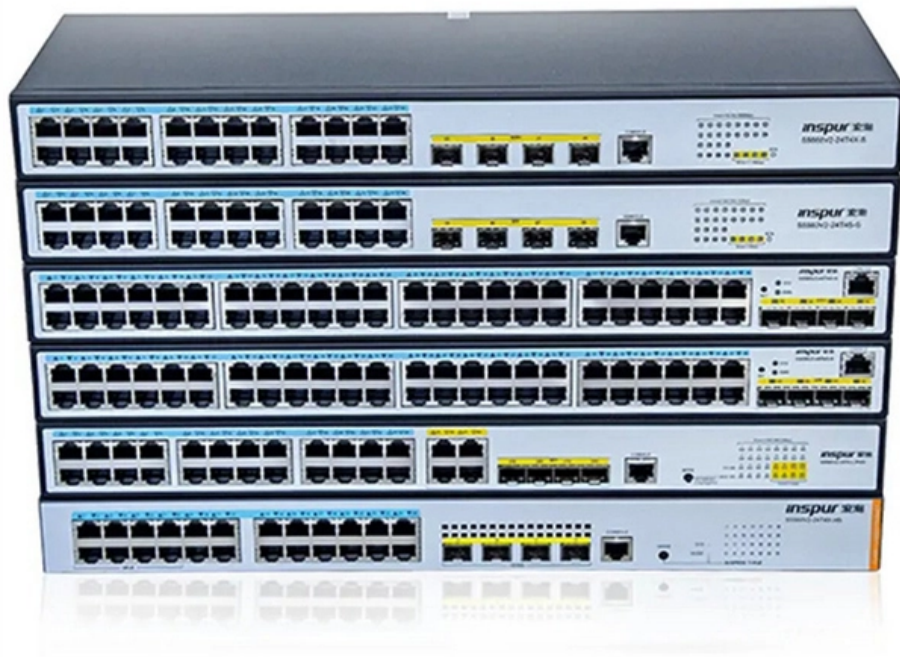


Pakistan Railway Station Monitoring Device





Overview

(Web Desk): Pakistan Railways has installed its first AI-based security system at Rawalpindi Railway Station. More than 180 cameras will monitor the station round the clock, covering tracks, parking areas, ticket offices and platforms. Rawalpindi station becomes Pakistan's first Safe & Smart hub with 143 cameras, new lounges, free Wi-Fi, and upgraded services under rail modernisation plan. ISLAMABAD - The Pakistan Railways has embarked on a large-scale programme to digitise and automate its network in a bid to enhance safety, cut down delays and bring efficiency to passenger and freight movement across the country. Speaking to the media after inaugurating the Safe and Smart Railway Station project in Rawalpindi, he said all major stations across.



Pakistan Railway Station Monitoring Device

Pakistan Railways deploying advanced communication, signaling

According to official documents available with Wealth Pakistan, advanced communication and signaling systems are being deployed across key sections of the national railway



Live Train Tracking Pakistan -- Real-Time GPS Location & Status

Track Pakistan Railway trains LIVE ? Real-time GPS locations, train running status, delays, ETAs & schedules. Free train tracker for Karachi, Lahore, Islamabad, Peshawar, Quetta routes. Updated



Railways Police beefs up security at railway stations

Red alert issued for security at all railway stations, including those in Karachi: IG Railway Police LAHORE: Pakistan Railways beefed up security

Research on Intelligent Panoramic Monitoring of Urban Rail Transit

Aiming at the problem that the existing urban rail transit station equipment and facility monitoring cannot achieve a global display of the station& #8217;s multi-professional equipment



Railway Tracking and Position Monitoring Systems

Railway tracking systems and the monitoring of railway vehicles in real-time can improve their operational safety and reliability while reducing the life-cycle costs of both passenger and freight



Pakistan Railways Goes Digital with IoT Fuel Monitoring

The caretaker Federal Minister for Railways, Communication & Maritime Affairs, Shahid Ashraf Tarar, inaugurated an IoT-based Fuel Monitoring



Smart Monitoring: Smarter Railways!

Smart Stations leverage IoT devices to facilitate real-time monitoring and management of various railway assets. This innovative approach allows for



Advanced-Data Acquisition and Automated Monitoring Systems in Railway

Advanced data acquisition and automated monitoring systems represent a transformative advancement in railway safety and operational efficiency. Integrating sophisticated

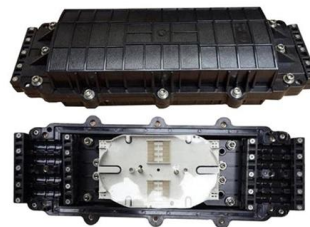


Railways digitalises fuel monitoring system

The ministry of railways decides to equip locomotives with latest gadgets to enhance financial and operational efficiency.

zentrak: Smart Monitoring and Signaling Systems for

zentrak is our solution package for monitoring and signaling systems for rail operators around the globe. To ensure that even particularly sensitive



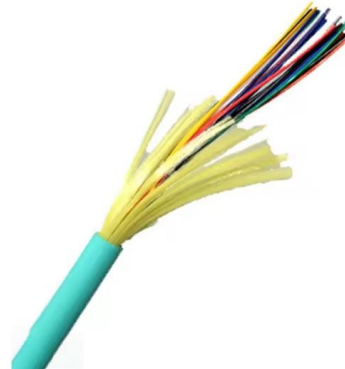
voestalpine: Smart Rail Infrastructure with Diagnostics

The zentrak software platform combines all railroad software modules within the Railway Systems Group. In concrete terms, this means that zentrak



Pakistan Railways to initiate fuel monitoring system from Jan 10

The online fuel monitoring system of Pakistan Railways is ready for installation and will be functional from January 10.



'184 CCTVs cameras installed at Pindi station'

"The station is equipped with a 24/7 AI-based monitoring system and 184 modern surveillance cameras, significantly strengthening security and operational oversight," he said during a meeting with

AcuRite Iris (5-in-1) Weather Station with High-Definition

Looking for AcuRite Iris (5-in-1) Weather Station with High-Definition Display and Remote Monitoring in Pakistan? Shop today! FREE shipping, easy returns and



Pakistan Railways installs first AI security system at

(Web Desk): Pakistan Railways has installed its first AI-based security system at Rawalpindi Railway Station. More than 180 cameras will monitor the station round



Railway and Infrastructure Monitoring - Predictive Maintenance IoT

Railway Station Maintenance: IoT sensors using Wi-Fi HaLow monitor essential station infrastructure, including escalators, elevators, and lighting systems, improving passenger experience and



Pakistan Railways Goes Digital: GPS, Smart Stations by 2026

Major stations will turn into smart facilities, starting with Rawalpindi station as the pilot model. Upgrades include digital boards for passenger information, advanced CCTV surveillance, and

Latest system to be installed for security of railways: IG Hussain

He also said that the railway police were working on an effective monitoring system and the latest equipment, including cameras and other latest security devices, would be installed at



Pakistan's First Safe, Smart Railway Station Opens

Following the completion of the Safe and Smart Railway Station project in Rawalpindi, more upgrades are to be implemented on major stations in the country. This is aimed at enhancing



Rawalpindi Railway Station Becomes Pakistan 1st Smart Station, 24/7

This video takes you on an exclusive tour of this state-of-the-art facility, featuring a comprehensive surveillance system of 128 high-definition cameras providing 24/7 monitoring.

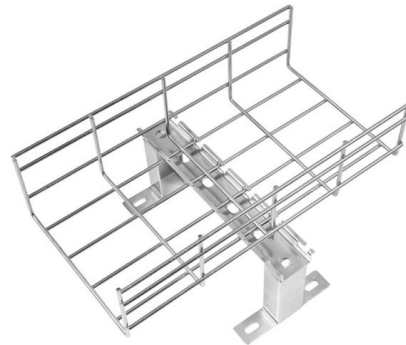


SafeRail: Using Sensor Technology and AI for Safer

In summary, the SafeRail project is an endeavor to modernize Pakistan Railway operations and make it more safe and secure for passengers.

Pakistan Inaugurates First Safe and Smart Railway Station in Rawalpindi

Rawalpindi has become the first railway station in Pakistan to be equipped with a comprehensive smart monitoring system, featuring 143 high-tech surveillance cameras installed



Pakistan Railways launches digital transformation programme

According to Pakistan Railways, advanced communication and signaling systems are being installed on key sections of the railway. The upgrade includes a computerized interlocking



Pakistan's First Safe and Smart Railway Station

Rawalpindi has become Pakistan's first railway station to be upgraded with a comprehensive monitoring and security system. The setup includes 143



Sniffer dogs and CCTV cameras at railway stations

The Pakistan Railways has started checking goods, passengers and train compartments at major stations to ensure safety.



Contact Us

For datasheets, pricing, or custom high-speed optical interconnect solutions, please visit:
<https://www.syropy.com.pl>