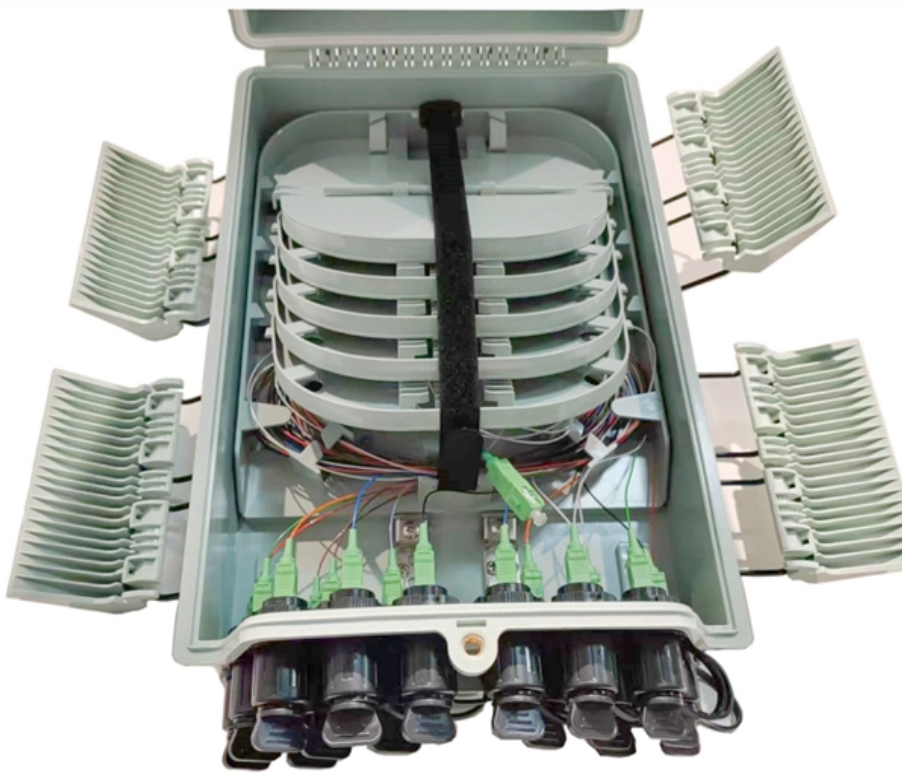


# **POS optical module SDH**





## POS optical module SDH

---



### Cisco 7600 OC-3c/STM-1 POS/SDH Optical Services Module

Products & Services Cisco Interfaces and Modules Cisco Optical Services Modules Cisco 7600 OC-3c/STM-1 POS/SDH Optical Services Module

### Differences Between SONET and SDH Framing in Optical Networks

Introduction This document reviews the basic differences in the framing used with Synchronous Optical Network (SONET) and Synchronous Digital Hierarchy (SDH) in an Asynchronous Transfer Mode



### CISCO SFP OPTICS FOR PACKET-OVER-SONET/SDH AND ATM

The Cisco industry-standard Small Form-Factor Pluggable Interface Converter (SFP) for packet-over-SONET/SDH (POS), optical networking, and ATM applications (Figure 1) are hot-swappable optical

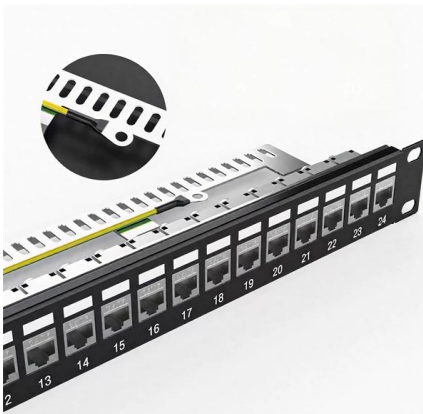
### Synchronous Digital Hierarchy (SDH) Graphical

This document provides an overview of Synchronous Digital Hierarchy (SDH) represented in images.



### Cisco 7600 Series 2 & 4-Port OC-12c/STM-4 POS/SDH

To provide aggregation services over an existing SONET infrastructure, Cisco 7600 Series routers can be configured to support various



### 01-07 POS INTERFACE CONFIGURATION

A packet over SONET/SDH (POS) interface is a physical interface that can directly transmit IP data services over a high-speed transmission channel provided by a synchronous optical network



### Packet over SONET/SDH

Packet over SONET/SDH, abbreviated POS, is a communications protocol for transmitting packets in the form of the Point to Point Protocol (PPP) over SDH or SONET, which are both standard protocols



### POS Interface Configuration



The basic transmission rate of SDH is 155.52 Mbit/s, which is called Level 1 Synchronous Transfer Module (STM-1). This rate equals the OC-3 rate in SONET. With synchronous multiplexing



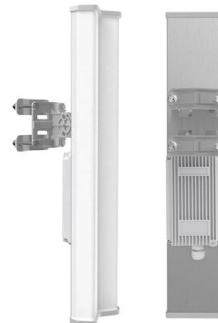
### Cisco 7600 Oc 3c Stm 1 Pos Sdh Optical Services Module Data Sheet

To provide aggregation services over an existing SONET infrastructure, Cisco 7600 Series routers can be configured to support various SONET interface cards, such as the Cisco 4-, and 8-port OC-3c



### Packet over SONET/SDH (POS) - Efficient IP Transport on Optical

Packet over SONET/SDH (POS) is a critical technology that allows IP and other packet-based data to be transmitted efficiently over high-speed optical networks.



### SONET and SDH: A Comprehensive Tutorial

Explore SONET and SDH, physical layer standards for optical fiber communication. Learn about HDLC framing, key terminologies, rates, and the SONET STS-1 SDH



## What is SDH Optical Terminal

Among the various broadband fiber-optic access network technologies, the SDH Optical Terminal has become the most commonly used.



## 1STM4 (1-Port 622M Packet over SDH/SONET Optical Interface Card

The 1STM4 is a high-speed MAN and WAN access module that provides 622 Mbit/s connection to a synchronous digital hierarchy (SDH) network. A 1STM4 card can be installed in a WSIC slot of a router.

## Cisco 7600 1-Port OC48c/STM16 POS/SDH Optical Services Module

Cisco 7600 1-Port OC48c/STM16 POS/SDH Optical Services Module Find additional documentation about this topic by browsing through the left navigation.



## What Is SONET/SDH? Understanding Synchronous

As the telecommunications industry continues to evolve, understanding the principles and applications of SONET and SDH remains



## Cisco SFP Optics For Packet-Over-Sonet/SDH and ATM Applications

The Cisco industry-standard Small Form-Factor Pluggable Interface Converter (SFP) for Packet-Over-SONET/SDH (POS), optical networking, and ATM applications (Figure 1) are hot-swappable optical



### Overview of CPOS

This section describes packet over SONET/SDH (POS) and channelized packet over SDH/SONET (CPOS) interfaces, exploring topics such as synchronous optical network (SONET) and synchronous

## Cisco 7600 Series 2 & 4-Port OC-12c/STM-4 POS/SDH

The Cisco 7600 Series 2 and 4-Port OC-12c/STM-4 POS/SDH OSM provides high-density, OC-12c/STM-4 connectivity for service provider POPs with



### Cisco SFP-OC3-MM Datasheet

SFP-OC3-MM The Cisco industry-standard Small Form-Factor Pluggable Interface Converter (SFP) for Packet-Over-SONET/SDH (POS), optical networking, and ATM applications (Figure 1) are hot



## POS on ONS Ethernet Cards

POS Overview Unlike Asynchronous Transfer Mode (ATM) and Frame Relay, Ethernet was not originally designed for interfacing with SONET/SDH. Ethernet data packets need to be framed and



## SONET/SDH

SONET/SDH can handle a variety of transmission rates and applications by defining a synchronous, flexible, optical hierarchy for carrying many signals of different capacities. This is accomplished using

## Genuine Cisco SONET/SDH Transceiver Modules

Buy Genuine Cisco SONET/SDH Transceiver Modules from GenuineTransceivers with best price and fast worldwide shipping.



## Microsoft PowerPoint

This lowest level SONET signal is called a Synchronous Transport Signal, level 1 (STS-1). Once the scrambler is applied, it is known as an Optical Channel, level 1 (OC-1). The lowest level SDH signal



### Cisco Sfp Modules Sonet Sdh Data Sheet

CISCO SFP OPTICS FOR PACKET-OVER-SONET/SDH AND ATM APPLICATIONS The Cisco industry-standard Small Form-Factor Pluggable Interface Converter (SFP) for packet-over

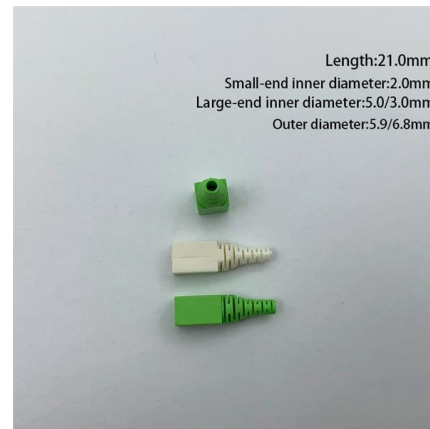


### CISCO SFP OPTICS FOR PACKET-OVER-SONET/SDH AND ATM

DIGITAL DIAGNOSTIC FUNCTIONS The Cisco SFP optics for POS and ATM applications allow real-time access, through the digital diagnostic monitoring interface, to a set of transceiver parameters

### Support

It can add or drop low-speed tributary signals to or from SDH signals without a large number of multiplexing/demultiplexing devices. This reduces signal attenuation and decreases device investments.



### Cisco 7600 Series 4

The Cisco 7600 Series 4- and 8-Port OC-3c/STM-1 POS Enhanced Optical Services Module provides high-density, OC-3c/STM-1 connectivity for



## Cisco 7600 OC-12c/STM-4 POS/SDH Optical Services Module

Cisco 7600 OC-12c/STM-4 POS/SDH Optical Services Module Find additional documentation about this topic by browsing through the left navigation.

Integrated Aluminum Alloy Die Casting



Durable and Secure Metal Screws



## Cisco 7600 Series 1-Port OC-48c/STM-16 POS/SDH OSM

To provide aggregation services over an existing SONET infrastructure, Cisco Series routers can be configured to support various SONET interface cards, such as the Cisco 1-port OC-48c/STM-16

## Contact Us

---

For datasheets, pricing, or custom high-speed optical interconnect solutions, please visit:  
<https://www.syropy.com.pl>