



**Syropy AI Connectivity**

# **PAM40NT Optical Network Terminal Test Report**





## Overview

---

Optical Network Terminal (ONT) Test Report\_NII-3 details for FCC ID 2A29YPM6264S made by Radisys Corporation. Drawing primarily from the latest emerging technologies, 50/100/200/400 GbE (gigabit Ethernet, IEEE 802.0 (Optical Internetworking Forum-Common Electrical Interface), we'll look at signal analysis from. The Optical Explorer (OX1) provides essential fiber testing capabilities, such as insertion loss and optical return loss (ORL) measurements, that enable frontline technicians to troubleshoot from the customer location up to the splitter in case of low power/no power. The PAM4 Transmitter Analysis software application enhances the capabilities of the DPO/MSO7000DX/SX and DPO/DSA/MSO70000 series oscilloscopes, adding transmitter and channel testing for four-level Pulse Amplitude Modulation (PAM4) devices and interfaces for both electrical and optical physical. This Technical Specification (TS) has been produced by ETSI Technical Committee Access, Terminals, Transmission and Multiplexing (ATTM). In the present document "shall", "shall not", "should", "should not", "may", "need not", "will", "will not", "can" and "cannot" are to be interpreted as described. ONT/ONU is alive and responding to OLT Accurately measure downstream & upstream power with multi-wavelength selective power meter ONMSi or SmartOTU built out.



## PAM4ONT Optical Network Terminal Test Report

---

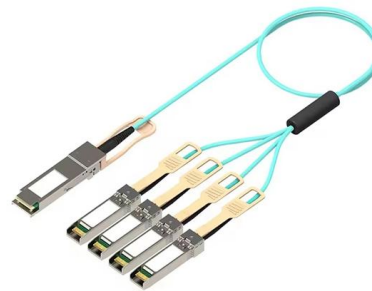


### Analyzing 26-53 GBaud PAM4 Optical and Electrical Signals

To perform accurate debug and compliance tests of optical transceivers you need a high performance, wide bandwidth oscilloscope equipped with an optical to electrical, O/E, convertor with great linearity

### Learn About Optical Network Terminal Status Lights

You can use the status lights on your optical network terminal (ONT) to help find and identify issues with your internet. Sometimes an ONT is referred



### Understand GPON Technology

This document describes the Gigabit Passive Optical Network (GPON) technology and how it functions.

### How to Identify and Resolve Rogue ONU/ONT Issues in

Understanding Rogue ONU/ONTs In a PON system, data transmission occurs through optical signals. Downstream signals are broadcast



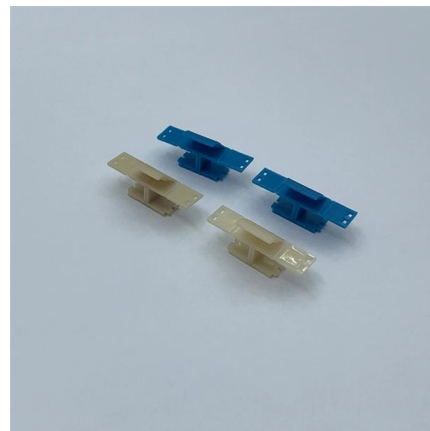
### Test instruments and methods for emulating optical network terminal

Disclosed are apparatuses and testing methods for emulating an Optical Network Terminal (ONT) device for communicating or otherwise working with an Optical Line Terminal (OLT) device



### PM6264S Optical Network Terminal (ONT) Test Report Measurement

Optical Network Terminal (ONT) Test Report\_NII-3 details for FCC ID 2A29YPM6264S made by Radisys Corporation. Document Includes Test Report Measurement Report.



### A Quick Guide to ONT (Optical Network Terminal)

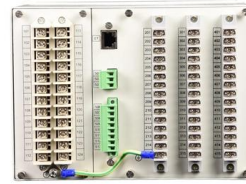
Understand how an Optical Network Terminal (known as an ONT) functions, how it differs from Optical Line Terminal (OLT), and its Role in



ONT latest\_final



ADTRAN made several ONT circuit modifications over the past couple years as new information was learned. ONT storm damaged returns were analyzed and data collected. Training material for



### Understanding Passive Optical Network Testing

The network is tested as it's built creating a baseline to allow automatic location of faults or damage, saving many hours of test set up, test acquisition and documentation.

### TS 102 873

Optical Network Termination (ONT) is connected to ENTI by means of optical terminated cord. Optical terminated cord is a product defined as a fibre optic cable terminated with connector on both ends.



### PON Testing and Service Activation Guide

The document outlines the testing processes for Passive Optical Networks (PON) across various phases including build, activation, and maintenance. It details the



## Optical Network Terminal (ONT) User Guide

Optical Network Terminal (ONT) User Guide Updated April 2021 seethelight from Sky uses fibre to bring you high-speed internet and therefore uses some equipment you may not be familiar with. This guide



### Understanding ONTs: How They Work and Their Benefits

Learn about Optical Network Terminals (ONT), their role in fiber optic networks, and the benefits they offer for high-speed internet, voice, and TV services.

### Understanding Passive Optical Network Testing

Optical test heads can automatically monitor and locate problems in PON networks. This system checks for fiber continuity from the CO to the customer and is the only way to know whether problems stem



### Troubleshooting Your Frontier Optical Network Terminal

Troubleshooting your ONT An ONT, or Optical Network Terminal, is the box where your fiber internet connection enters your home to power your fiber network. Your



### Checks for you fibre NTE box , Openreach

It's better to call on a mobile if you can (or have it handy when you ring), in case they need to run tests on your phone line. If you're moving home If you're leaving a



### Cisco 10G Routed PON ONT Data Sheet

These 10G optical network terminals for fiber-to-the-premises applications can be managed remotely and are interoperable with the Cisco Routed PON solution. Three models offer a

### How to Check Your ONT (Optical Network Terminal)

If you are ever in need of checking your ONT, this video will show you how to do so and what it is you are looking for. Always remember to securely close the



### Fiber tests in PON networks: commissioning and maintenance

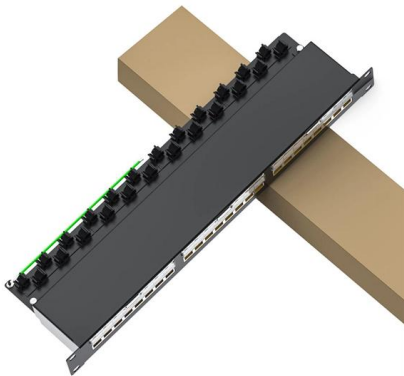
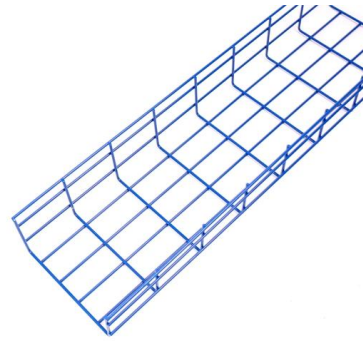
At the end of the pro-cess, the instrument provides the technician with a detailed installation report that precisely matches the commissioned PON branch.

### Support Knowledge: Optical Network



## Terminals (ONTs)

An Optical Network Terminal (ONT) is a device that converts the optical signal (transmitted over optical fibre cable, or fibre) to a digital signal, that the Managed



## What is ONT? Everything You Need to Know

ONT, short for Optical Network Terminal, is a vital component in fiber-optic communication systems. It acts as the endpoint device in a fiber-to-the-premises (FTTP) setup, translating optical

## Verizon Ont Troubleshooting: Expert Tips for Quick Fixes

Basic Ont Troubleshooting Steps Dealing with internet issues can be frustrating. Your Verizon ONT (Optical Network Terminal) is crucial for your



## PAM4 Transmitter Analysis Datasheet

The measurement results can be saved in the form of a test report. The report includes; the configuration of the oscilloscope, application configuration, measurement results, and plots all



## PON Network Testing , EXFO

Monitor, activate, and troubleshoot PON networks with EXFO's OTDR, power meter, and passive probe tools for reliable GPON/XGS-PON deployments.



## Passive Optical LAN for Enterprise Applications

Optical Network Terminal (ONT) - ONTs enable optical to electrical conversion and Ethernet connectivity for voice, video, data, Wi-Fi, and all other digital enterprise services and devices.

## Troubleshooting the Optical Network Terminator (ONT)

Check that the other end of the broadband cable is correctly inserted into one of the ports on the Optical Network Terminator (ONT). This will usually be Port 1. If the



## What is an ONT (Optical Network Terminal) , IO by HFCL Blog

Optical Network Terminals have diverse applications in bringing high-speed, reliable, and efficient fiber optic connectivity to homes, businesses, and various sectors, contributing to the



## GigaPoint ONTs and ONUs , Calix

The GigaPoint® GP4201XH optical network terminal is an outdoor, XGS-PON service delivery terminal providing one 10 Gigabit Ethernet (GE) interface and



### How to Monitor the Status of an ONT

Introduction An Optical Network Terminal (ONT) is a critical piece of equipment in fiber networks, enabling customer connections to the internet by

## Contact Us

---

For datasheets, pricing, or custom high-speed optical interconnect solutions, please visit:  
<https://www.syropy.com.pl>