

Overhead cable trays are installed in cable trenches





Overhead cable trays are installed in cable trenches

FactSheet

Cable trays feature flexibility unmatched by conduit, as cables are easier to mark, remove and find in cable trays. Cable trays are available in a number of different configurations, including ladder,



Cable Tray Types and Sizes

One of the major perks of this tray type is its ease of installation--cables can be laid in or removed from the tray quickly, making it ideal for environments where



Supplier of power cables, cable tray & cable raceway in

We all know that cable trenches are used for laying power cables, and weld the load-bearing angle steel frame on the side wall of the trench and ground

Best practice guide to cable ladder and cable tray

Cable ladder and cable tray systems The following recommendations are intended to be a practical guide to ensure the safe and proper installation of

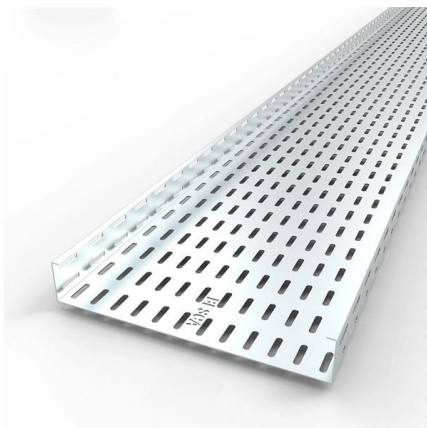


Difference Between Cable Tray and Cable Trench , Hutaib Electrical

Made from materials like galvanized steel, aluminum, or fiberglass, cable trays are often installed overhead or along walls to provide organized pathways for cables.

Best Practice Guide to Cable Ladder and Cable Tray Systems

This publication is intended as a practical guide for the proper and safe* installation of cable ladder systems, cable tray systems, channel support systems and associated supports.



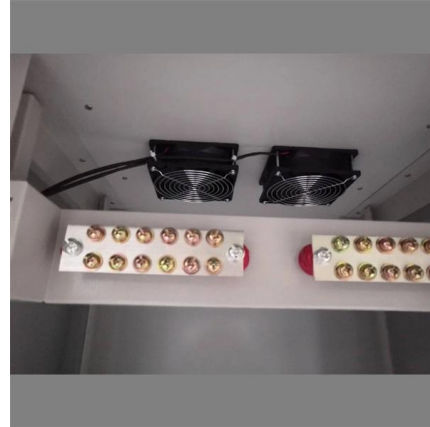
A Guide to Installing and Supporting Electrical Cable Trays

A professional guide to installing electrical cable tray systems per NEC Article 392. Covers support, securing cables, and fill calculations.



Cable Tray Systems: Requirements and Best Practices

This article explains the main requirements and good practices for cable tray systems, including tray types, materials, loading, supports, bonding, cable selection, and installation details.



Cable tray

Combustible cable jackets may catch on fire and cable fires can thus spread along a cable tray within a structure. This is easily prevented through the use of fire

Best practices for underfloor cable management

Good cable organization ensures optimal performance and simplifies cable maintenance, reducing downtime. All cables should be supported in cable tray that is run overhead, above the equipment or



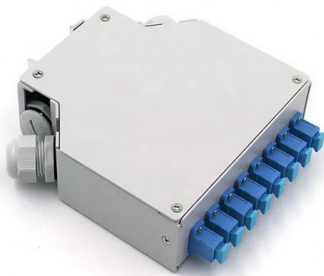
Overhead Cable Management: Cable Runway vs. Cable

Whether suspended from the ceiling, wall-mounted, or supported by racks and cabinets, overhead cable management systems are flexible and



UNDERGROUND CABLE INSTALLATION IN GROUND

Filling in of trenches should not be commenced in adequate Engineer inspection and approval of the cables accessories in situ and the backfill material. There is an



Understanding Cable Pathways, Cable Conduits, Cable

In this blog post, we discuss two types of cable pathways: conduits and cable ladders. Additionally, we cover cable pits. Explore the essentials of cable

Cable Tray SHIB NAL

Cable trays support cables across open spans in the same way that roadway bridges support traffic. Cable trays can provide a safe component of a power, low voltage control, data or



Cable Tray Installation

Learn everything about cable tray installation with our complete guide. Discover types, steps, and safety tips for efficient electrical cable management.



Benefits of Cable Trench and Cable Tray Solutions

Learn the differences between cable trench and cable tray systems. This guide compares their structure, installation, and suitability for various setups.



Cable tray systems support cables' journey through the

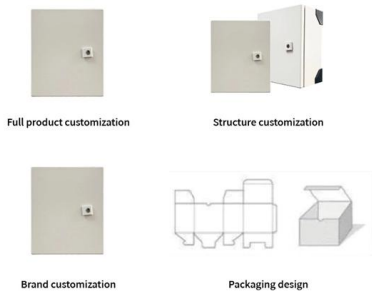
Overhead or under the floor, supporting different cable types, cable tray serves a crucial purpose in a data center facility.

Method Statement installation of Cable Trays and Ladders

This method statement covers the site installation of the cable tray & ladders and the requirements of checks to be carried out.



OEM/ODM
CUSTOMIZATION AVAILABLE



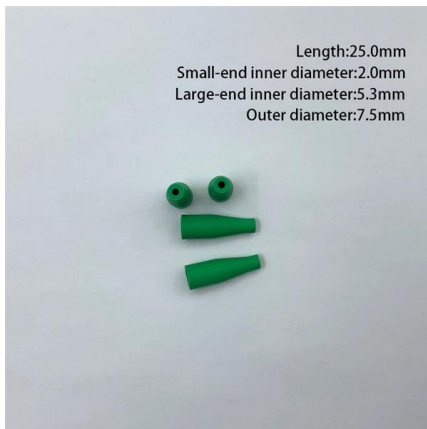
Benefits of Cable Trench and Cable Tray Solutions

Unlike a cable trench, which is installed underground, a cable tray and cable trench system is used above ground, offering a flexible, visible solution to manage cables.



Cable Tray Technical Guide A practical guide to product selection and

Cable tray installed in a hazardous location must contain only those cables that are appropriate for this type of environment as defined in Chapter 5 of the NEC.



Installation Of Cable In Cable Trays: NEC, Safety

Cable installed in tray is subject to many of the same considerations as cable being installed in conduit systems. Correctly calculated data and adherence to the

Underground Cable Laying Methods

Cable marking and identification along runs is also covered. Underground cable installation in trenches is described as the common method, providing



Cable Pulling Cable Laying , Cable Rollers , Cable Drum

Cable installation products are used in such diverse applications as overhead line stringing, trench cable laying, fibre optic cable pulling, and conduit riser supports.



Cable tray manual

Where the cable type may be used, cable tray may be installed to support it except as per Section 392.12 which states that cable trays shall not be installed in hoistways or where subject to severe

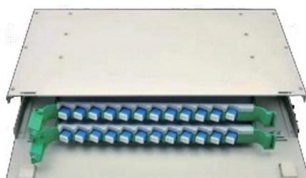


Cable tray vs cable basket vs cable ladder vs cable

This article will discuss the four most common types of cable containment and their uses: cable tray, cable basket, cable ladder, and cable

What are overhead cable trays and how are they used?

They are typically used for heavy-duty cables, especially when large quantities or thick cables need to be managed. - ****Wire Mesh Cable Trays****: These trays consist of a wire mesh and



Vertical & Overhead Installation of Cable Trays and Wire Mesh

Yes, wire mesh baskets and cable trays can be installed vertically or overhead, and they absolutely should be in many cabling projects. Whether routing Cat 6 cables in a tight riser space or



What are overhead cable trays and what are they used for?

Overhead cable trays are a type of cable management system that is commonly used in buildings, industrial facilities, and data centers to support and organize large quantities of electrical



Contact Us

For datasheets, pricing, or custom high-speed optical interconnect solutions, please visit:
<https://www.syropy.com.pl>