

# **Outgoing line cabinet connected to low-voltage busbar**





## Overview

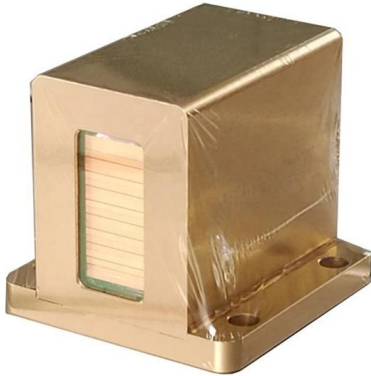
---

Install the export switch cabinet on the low-voltage side of the transformer to send the electric energy to the low-voltage busbar through this switch cabinet, and then install several low-voltage switch cabinets on the low-voltage side to send the electric energy. ents), and the electrical equipment, formed by the internal connections and by the incoming and outgoing terminals is regard, there has been an evolution which has resulted in the replacement of the previous Standard IEC 60439 with the present Standard IEC 61439. Behind every reliable low voltage switchgear lineup is a design balance that is harder than it first appears: current must flow safely, heat must be controlled, internal space. Incoming line cabinet is a switch cabinet that introduces power from the outside. The 10kV power supply sends the power to the 10kV busbar through the switch cabinet. IEC 61439 is a standard developed by the International Electrotechnical Commission (IEC) that covers design verification for low-voltage electrical products and assemblies.



## Outgoing line cabinet connected to low-voltage busbar

---



### LV/MV power substation equipment and wiring

Intelligent low-voltage switchgear is now available where strategically placed voltage sensors and circuit telemetry is monitored by a PLC. Thermal

### Electrical Components and Their Functions Inside the High-voltage

Also known as the power receiving cabinet, it is a device used to receive electric energy from the power grid (from the incoming line to the busbar), generally installed with circuit breakers,



### Guide to Low Voltage Busbar Trunking Systems Verified to BS EN

Guide to Low Voltage Busbar Trunking Systems Verified to BS EN 61439-6 5 Busbar Trunking System : An enclosed electrical distribution system comprising solid conductors separated by insulating



### Example On How To Design a Low Voltage Switchboard

Let us suppose that realization of a main distribution low voltage switchboard is required, to be placed on the load side of a 2000kVA MV/LV



### The main components and functions of low-voltage power distribution

The rated current of the low-voltage power distribution cabinet is AC 50Hz, rated voltage 380v power distribution system, the main function is to distribute power, distribute the voltage through the



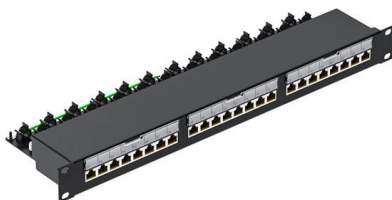
### Modern practice for LV/MV substation and power

I'm highly specialized in the design of LV/MV switchgear and low-voltage, high-power busbar trunking (<6300A) in substations, commercial



### Low-Voltage Distribution Cabinets: Classifications and Operating

II. Operating Principle of Low-Voltage Distribution Cabinets  
Electrical energy transmission in a low-voltage distribution system begins at the incoming feeder cabinet. After power is introduced here, it is



### Incoming feeder, coupling, and outgoing



### feeder cubicle with ACB

Depending on the location of the main busbar, there are the following options for the infeed and the outgoing feeder: The circuit-breakers have to be equipped with an electronic



### Low-voltage switchgear with fixed units

Installation and commissioning The horizontal busbars are ready-mounted upon delivery and can easily be connected at site with joints between each cubicle. They can be located at the top or low down

### Standard cubicle configurations for a medium voltage

MV metal-enclosed switchgear This technical article will shed some light on the standard design of medium voltage metal-enclosed switchgear



### Low Voltage Switchgear Design for US and EU Markets: Busbar

Learn how low voltage switchgear design balances busbar current rating, cabinet space, heat management, and modular construction for U.S. and European projects.



## Designing Low Voltage Switchboards

This document provides an example of how to design a low voltage switchboard. It details: - The single-line diagram of an LV switchboard that will distribute power



### How to choose the incoming line method for high and low voltage

3. Side entry line Side incoming line refers to the power supply being connected through the bus duct or cable on the side of the cabinet.

\*Advantages: High flexibility, easy to achieve parallel

### Design and installation of low voltage busbar trunking

Cable jointer not required. Busbar trunking systems may be dismantled and re-used in other areas. Busbar trunking systems provide a better



### Incoming cabinet + outgoing cabinet + capacitor cabinet: How does

This article will delve into the working principles, functions, and important roles of these three components in low-voltage power distribution systems, revealing how they work together to



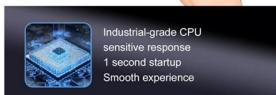
## Electrical Components and Their Functions Inside the High-voltage

7 Metering cabinet Mainly used for measuring electric energy (kWh), and high voltage, low voltage, generally installed with disconnectors, fuses, CT, PT, active electricity meters (traditional



### 5-INCH COLOR TOUCHSCREEN

Intuitive operation, easily accessible with just one touch



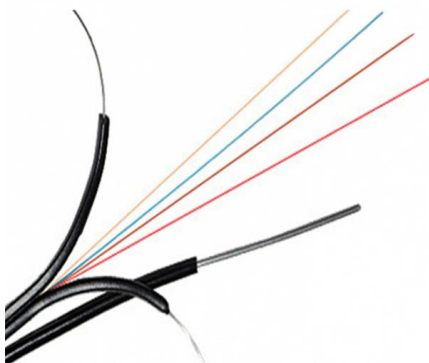
Industrial-grade CPU  
sensitive response  
1 second startup  
Smooth experience

## How to assemble low voltage electrical switchboard

Distribution busbars connected to the main busbar. They provide power to outgoing devices. IEC 61439-1 Power busbar assembly The following

## Low-voltage switchgear Installation, handling MNS Light W and

The removable apparatus units have plug-in connection for the incoming supply from the vertical busbar system, whereas the outgoing cables are connected permanently direct to the apparatus terminals.



## Transformer and Distribution Cabinet Equipment

- For transformers requiring protection levels, the openings on the high-voltage or low-voltage and other insulation covers should comply with the



### How Can Low Voltage Switchgear Make Power Distribution Safer and

Low Voltage Switchgear is often treated as a basic electrical cabinet, but for buyers, engineers, contractors, and facility managers, it can decide whether a power distribution system



### The difference between the incoming line cabinet and the outlet cabinet

For substations of voltage levels of 35-110kV and above, the incoming line cabinets are transformer low-voltage (10kV) switchgear. That is, the first cabinet connected to the initial end of the 10kV busbar



### Busbar Arrangements in Substations , Terminal and

This arrangement is not used for voltages exceeding 33kV. The indoor 11kV sub-stations often use single Busbar Arrangements in Substations. Fig. 25.5 shows



- IP65/IP55 OUTDOOR CABINET
- OUTDOOR CABINET WITH AIR CONDITIONER
- OUTDOOR ENERGY STORAGE CABINET
- 19 INCH

### Technical Application Papers No.11 Guidelines to the construction

In each test, the incoming circuit and the busbars are lo-aded to their rated current and as many outgoing circuits in a group are loaded to their rated current as necessary to distribute the incoming



## IEC 61439 Busbar Standard: A Guide to Low-Voltage

Our IEC 61439 busbars are high in demand due to their optimum performance in power distribution and electrical systems. Our engineers have



### Low-voltage switchgear with withdrawable and removable units

Withdrawable and removable apparatus units  
The withdrawable units have plug-in connection both for incoming supply from the vertical busbar system and for outgoing cables.

### Composition Of Low-voltage Power Distribution System

Install the export switch cabinet on the low-voltage side of the transformer to send the electric energy to the low-voltage busbar through this switch cabinet, and then install several low



### Basics in low voltage distribution equipment

This paper provides a basic overview of the definitions, components, applications and other details associated with low voltage distribution equipment. It covers electrical panelboards, switchboards



### 31-SDMS-07C

SPECIFICATIONS FOR LOW VOLTAGE DISTIRBUTION PANEL WITH ALUMINUM BUS BAR, MAIN CIRCUIT BREAKER AND 300A OUTGOING MCCBs. This document contains proprietary



### Electrical Low/High Voltage Complete Control Cabinet

High voltage operating mechanism, high/low voltage explosion-proof distribution device and high voltage switchgear and other categories. The



### What is the function of a low-voltage electrical room, and

What is a Switchgear Room? A switchgear room is an indoor electrical distribution facility that supplies power to low-voltage consumers. It typically includes medium



## Contact Us

---

For datasheets, pricing, or custom high-speed optical interconnect solutions, please visit:  
<https://www.syropy.com.pl>