

# **Outdoor landscape distribution box first-level surge**





## Outdoor landscape distribution box first-level surge

---



### Which type of surge arrester is used in a distribution box panel?

Discover the different types of surge protectors (SPD) used in distribution board panels. Learn how to select the right surge protector based on protection level, and rated discharge current to safeguard

### Classification of first, second and third level surge protection

Since we've received inquiries from our customers regarding the classification of first, second, and third-level surge protection devices, we've put together a brief introduction in this article to explain each



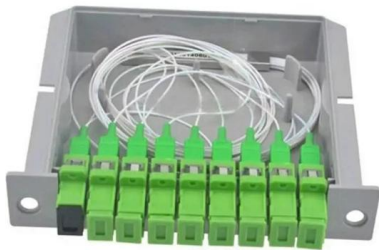
### Outdoor Electrical Box with Breakers: Circuit Protection & Load

These specialized enclosures combine weatherproof protection with circuit protection devices, creating a complete power distribution solution designed to withstand environmental



### What is the Ideal Installation Height for a Distribution Box

Install a distribution box at 4.5 to 5.5 feet high for safety, accessibility, and compliance. This height ensures easy use and protection from hazards.



### Surge Protection of Substations

Protecting substations from lightning and switching surges that lead to insulation flashover has been a key issue for as long as there have been power

### The Outdoor Ground Box Supplies Power to Outdoor

The Outdoor Ground Box is UL-listed and delivers power, data, or AV connectivity in outdoor spaces. Learn how to supply permanent power with Legrand.



### Thumb rules for surge arrester installation in different

Installation rules for LV surge arresters A variety of documents deal with the subject of surge arrester installation: for example in France, standard NF

### Where Can I Place SPDs to Protect My



## Facility?

Where Can I Place SPDs to Protect My Facility? It is impossible to prevent voltage surges from either entering your facility or from occurring inside of your facility.



### Surge protection for main distributions , Phoenix Contact

Find out about the correct installation of surge protection in large main power distributions in compliance with the required cable lengths.



### Surge Protective Devices (SPDs)

SPDs should be installed in the distribution boards supplying equipment that is sensitive or critical for the activity being carried out (and/or near to equipment with proximity SPDs).



### NEC Code Requirements For Surge

The National Electrical Code® (NEC) includes several code requirements related to surge protective devices. Learn about these key code requirements.



### Is it necessary to do first-level lightning



### protection for the

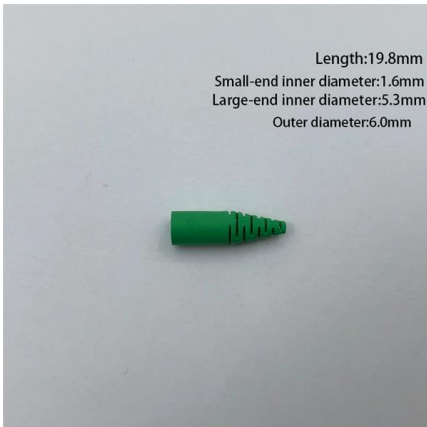
The protection level of the first-level surge protector is generally around 2000V. When the withstand voltage of the equipment is too low, a first-level surge protector may be installed.

### STAINLESS STEEL WIRE MESH

Long-lasting and durable

Comprehensive specifications

Customized non-standard products



Length:19.8mm  
Small-end inner diameter:1.6mm  
Large-end inner diameter:5.3mm  
Outer diameter:6.0mm

### Why The Distribution Box Must Be Equipped With A

The first-level surge protector is mainly installed in the main incoming line cabinet (distribution box). As the first-level lightning protection of the building

### Whole House Surge Protectors for Home Safety , Lowe's

Whole house surge protectors help safeguard electrical systems from unexpected power surges. Shop now for dependable long term protection of residential wiring.



### Installation information and requirements

What are the installation instructions and requirements? Lightning and surge protection may only be installed, put into operation and maintained by qualified electricians who are familiar with national



## Lightning Protection Measures for Substations and

Learn about essential lightning protection measures for substations and transformers, including the use of lightning rods, surge arresters, and



## Installing An Electrical Outlet In A Garden Or Landscape

Installing an outlet outdoors means purchasing the materials that were specifically designed for the application - weatherproof / outdoor. Weatherproof utility boxes

## Outdoor Power Distribution Box Solutions:

Discover how J& HW Group's outdoor power distribution boxes deliver safe, weatherproof, and customizable solutions for modern industrial and



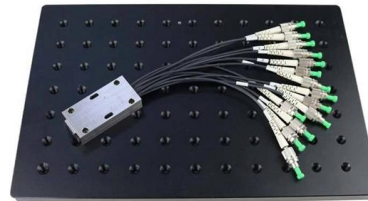
## Surge protection

The CVX series is designed for medium and low surge exposure levels and chemically aggressive environments. With its compact design, the CVX series is also ideal for point-of-use applications that



## Where To Set Up The Primary Surge Protector

This article focuses on where to set up a first-level surge protective device. Where to set up a first-level surge protection device, building protection



## Waterproof Outdoor Surface Mounted 1-in-1-out 1000V

Buy Waterproof Outdoor Surface Mounted 1-in-1-out 1000V IP65 Solar PV Surge Lightning Protection DC Distribution Box Combiner Box online today! DC 1000V

## Eaton's Guide to Surge Suppression

Eaton's Powerware surge protective devices can be fully integrated into power distribution units (PDUs), and are designed to meet the demanding needs of the same mission-critical applications and



## What is a waterproof outdoor distribution box

A waterproof outdoor distribution box shields electrical connections from water, dust, and weather, ensuring safe and reliable outdoor power distribution.

## Installing Surge Protector In Distribution



### Box: Advantages And

When choosing a suitable surge protector, the following factors need to be considered: Voltage level: Select a suitable surge protector according to the voltage level used in the distribution

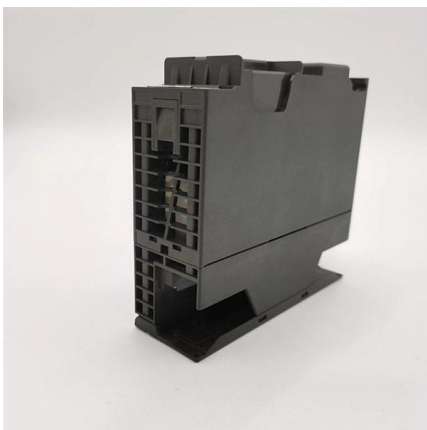


### Detailed Explanation of Tiered Surge Protection for Distribution Boxes

The Level 1 surge protection device is designed to withstand high-current surges from direct lightning strikes or induced lightning. It diverts most surge current to the earth.

### NEC code requirements for surge protection

The surge device can be on the circuit serving the wind electric system or on the load side of the service disconnect. 708.20 "Surge protection devices shall be provided at all facility voltage distribution



### 10 Common Mistakes DIYers Make In Circuit Breaker Boxes

How much do you know about your circuit breaker box or electrical panel? Learn what not to do! [CHECK OUT THESE RELATED VIDEOS!](#) ?o DIY Sub Panel Install:



## Classification of first, second and third level surge protection

Different levels of surge protection serve distinct functions in maintaining electrical system health. This is a comprehensive guide to first, second, and third level surge protection and their roles.



## Secure Your System: Type 1 Surge Protector Installation

Type 1 surge protector installation requires turning off power, selecting a suitable location, and ensuring secure connections.

### 230.67 Surge Protection.

230.67 Surge Protection. This SPD is in a subpanel downstream of the service. The SPD is not required to be in the service equipment as permitted in (B) if located at



## Contact Us

---

For datasheets, pricing, or custom high-speed optical interconnect solutions, please visit:  
<https://www.syropy.com.pl>