

Origin of Chad Red Laser Diodes



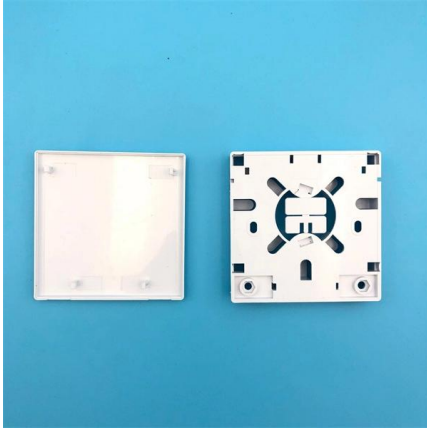


Overview

The active region of the laser diode is in the intrinsic (I) region, and the carriers (electrons and holes) are pumped into that region from the N and P regions respectively.



Origin of Chad Red Laser Diodes

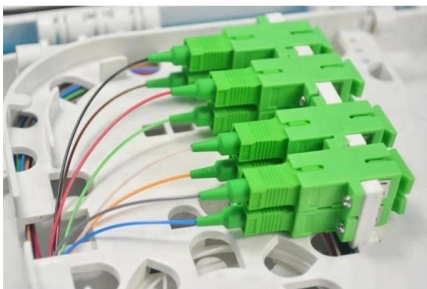


Photonic Frontiers: Laser diodes: Looking back/Looking

The observation of incredibly bright recombination radiation from gallium-arsenide diodes cooled to liquid-nitrogen temperature at the MIT Lincoln

Red Laser Diodes

Red Laser Diodes Red laser diodes are optimized for sensor applications such as barcode readers, ranging equipment, marking devices, and PM2.5 detection. In addition to the 650-660nm band for



CW Laser Diodes (Red)

The classic laser diode emits in the red spectral range from 635 nm to 680 nm. Depending on the field of application and required specifications, we can provide you with a suitable laser diode with a power

The Birth of the Visible LED: Nick Holonyak Jr. and a Turning Point in

Holonyak's invention of the visible LED and the red laser diode was just the beginning. In 1977, at the University of Illinois Urbana-Champaign, he and his students developed the first



Why Are Lasers Red? Diodes, Cost, and History

The color a laser diode emits depends on its bandgap, which is the energy gap that electrons must cross to release a photon. A smaller energy gap produces longer-wavelength (redder) light, and a larger

Laser diode

Overview Theory History Types Reliability Applications Common wavelengths Further reading

A laser diode is electrically a PIN diode. The active region of the laser diode is in the intrinsic (I) region, and the carriers (electrons and holes) are pumped into that region from the N and P regions respectively. While initial diode laser research was conducted on simple P-N diodes, all modern lasers use the double-hetero-structure implementation, where the carriers and the photons are confined in order to maximiz



Red laser diode development for automotive applications

In recent years, red laser diodes (LDs) have been considered for automotive applications. The limitation of high temperature performance of AlGaInP-based red LDs has been one of the



Red Laser Diodes , Ushio America, Inc.

Red Laser Diodes You are here: Home / Technology / Active Fiber Optic / Red Laser Diodes



Red Laser Diodes - Mouser

Red Laser Diodes are available at Mouser Electronics. Mouser offers inventory, pricing, & datasheets for Red Laser Diodes.

LED Vs. Laser for Red Light Therapy: The Superior

Red light therapy (RLT) has gained significant popularity in recent years for its potential benefits in promoting skin health, reducing pain, and improving overall





Nichia starting in-house production of high-power red laser diodes

Laser diodes play an important role in determining the specifications of projectors, and Nichia has been required to flexibly respond to various customer requests for the performance of

The Birth of the Visible LED: Nick Holonyak Jr. and a Turning Point in

While other researchers were focused on infrared-emitting devices, Holonyak took an innovative approach, creating a new alloy of gallium arsenide phosphide (GaAsP) to emit red light.



Red Laser Diodes

ROHM's red laser diodes are optimized for sensor applications such as barcode readers, ranging equipment, marking devices, and PM2.5 detection.

Laser Diode

A laser diode (LD) is defined as a forward-biased semiconductor diode that emits coherent light when an electrical current stimulates recombination of electrons and holes at the p-n junction.



Red laser diodes explore the future of



biomedical and quantum

AlGaInP red laser diodes were commercialized in the late 1980s. Since then, along with continued performance improvements, they have been widely used as visible lasers for visible applications

Red Lasers - laser diodes

Various kinds of lasers emit red light, including laser diodes, gas lasers, some solid-state lasers as well as sources involving nonlinear frequency conversion.



Photonic Frontiers: Laser diodes: Looking back/Looking

Once the weaklings of the laser world, unable to emit a few milliwatts continuously at room temperature, laser diodes have become workhorses. Today,

The development of the semiconductor laser diode after the first

The first semiconductor laser diodes were deceptively simple. They were typically a small chunk of n-type GaAs, often grown by vapor transport, with cleaved or polished facets forming a





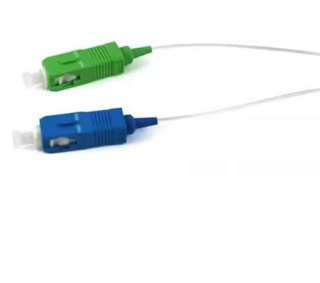
637nm 1mW-200mW Red Diode Laser System

637nm red diode lasers gets special laser beam transverse mode of TEM00, always ensuring high intensity and high brightness red laser beam and circular emission



Chad Laser Diode Market (2024-2030) , Trends, Outlook & Forecast

Historical Data and Forecast of Chad Laser Diode Market Revenues & Volume By Vertical External Cavity Surface Emitting Laser (VECSEL) Diodes for the Period 2020-2030



Red laser , Product , Laser , Ushio Inc.

Ushio's red laser diodes are available in a wide range of wavelength from 630 nm to 690 nm and optical output from 5 mW to 4.2 W.

History of the LED

The history of the light-emitting diode begins with the 1906 discovery of electroluminescence from a solid state diode by Henry Joseph Round. In 1927,





CW Laser Diodes (Red)

The classic laser diode emits in the red spectral range from 635 nm to 680 nm. Depending on the field of application and required specifications, we can provide



History of LED

History of LEDs - Light Emitting Diodes Light-emitting diode is an electric component that emits light when connected to direct current. It works on electroluminescent



Recent progress of red laser diodes for display applications

Recent progress of red laser diodes for display applications Tetsuya Yagi High Frequency & Optical Device Works, Mitsubishi Electric Corp., 4-1 Mizuhara, Itami, 664-8641, Japan



Contact Us

For datasheets, pricing, or custom high-speed optical interconnect solutions, please visit:
<https://www.syropy.com.pl>