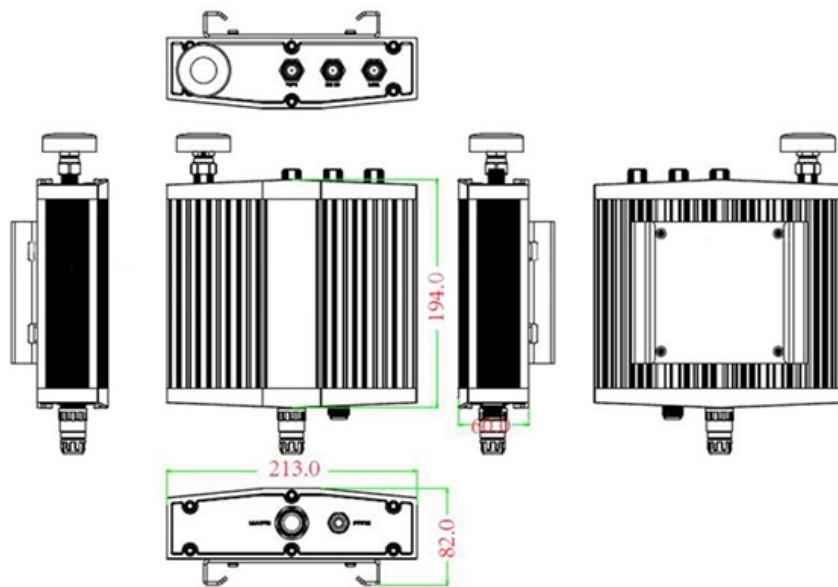


Optocoupler Industrial Application Module

Mechanical drawing





Optocoupler Industrial Application Module



OPTOCOUPLER DEVICES AND APPLICATION

OPTOCOUPLER DEVICES AND APPLICATION An optocoupler (or an optoelectronic coupler) is basically an interface between two circuits which operate at (usually) different voltage levels. The key

Application Examples

INTRODUCTION Optocouplers are used to isolate signals for protection and safety between a safe and a potentially hazardous or electrically noisy environment. The interfacing of the optocoupler between



Optocouplers Guide: Understanding Types,

Learn how optocouplers ensure electrical isolation and signal transfer in circuits. This guide covers their components, working principles, and applications.



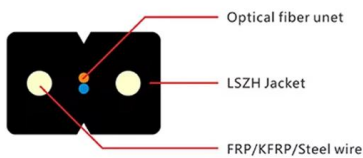
Optoisolation and Optical Sensor Products Selection Guide

Key Broadcom products include optocouplers with phototransistor outputs, digital and analog outputs, high-speed and high-gain performance, drivers for isolated gate transistors and intelligent power



SSZT391 Technical article , TI

Optocoupler standards have not historically included lifetime reliability performance data or high-voltage stress testing for sustained applied high voltages, and thus



ANO007 , Understanding Phototransistor Optocouplers

In order to design a functionally robust and reliable application with optocouplers, it is essential to understand not only the device's main parameters and parasitic elements, but also their tolerances



Understanding Phototransistor Optocouplers

Understanding Phototransistor Optocouplers Content you may also like An optocoupler, also known as photo-coupler or opto-isolator, is a component





What Is Optocoupler and Its Application with Examples

Video: How an Optocoupler Works and Example Circuit II Photocouplers, Opto-couplers & Opto-isolators These devices are known by a



Isolators , DigiKey

Optocouplers are essential in feedback loops, signal isolation, and safety-critical applications, particularly in switch-mode power supplies, PLC inputs, and motor

Weidmuller Optocouplers

Relay and optocoupler versions in the MICROSERIES are used in industrial automation applications for separating and coupling digital input and output signals. The space saving design makes them



Designing Linear Amplifiers Using the IL300 Optocoupler

INTRODUCTION This application note presents isolation amplifier circuit designs useful in industrial test and measurement systems, instrumentation, and communication systems. It covers the IL300's



Optocouplers and Opto-Isolators

Broadcom supplies high-reliability hermetic optocouplers for military use, galvanic isolation optocouplers for industrial applications, and optocouplers specifically



Optocoupler : Types and Its Applications

An optocoupler (also known as an optoisolator) is a semiconductor device that transmits an electrical signal between two isolated circuits. An

Grundlagen zu Phototransistor-Optokopplern

Diese Application Note geht von den Grundlagen aus und bietet umfangreiche experimentelle Ergebnisse mit den Optokopplern WL-OCPT 816



optocouplers for industrial applications

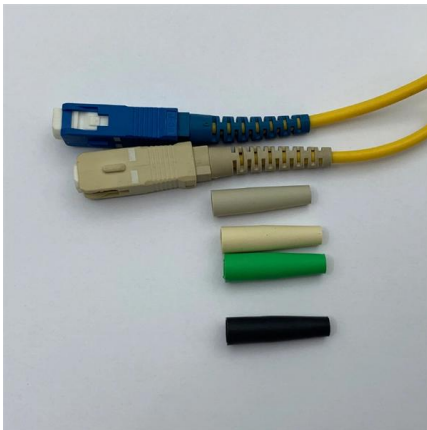
Achieving 5kV isolation for industrial, test and measurement, and metrology applications





Optocoupler & Optocoupler-Solid State Relay

We also offer solid state relay-optocoupler modules that include bridge rectifiers, Darlington transistors, and Zenner diodes. Find your solution in our Integrated



Introduction to Optocouplers. principle, Application

What are Optocouplers? Optoisolator or better known as an optocoupler is an electric photo switch consisting of a LED emitting infrared light

Optocoupler

This handbook begins with a selection guide followed by sections discussing critical optocoupler design parameters such as Insulation and Withstand Voltage, Regulatory Agency Safety Standards,



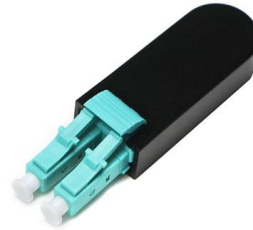
Optocoupler modules in interface electronics

In industrial applications, an optocoupler module is a standalone DIN rail-mounted device imparting optical separation for a signal path. At its core is an optocoupler -- a circuit featuring a light-emitting



Interface relays and optocouplers

Environmentally friendly, cadmium-free and lead-free, ABB interface relays and optocouplers meet RoHS requirements. Complete versions consisting of a relay,

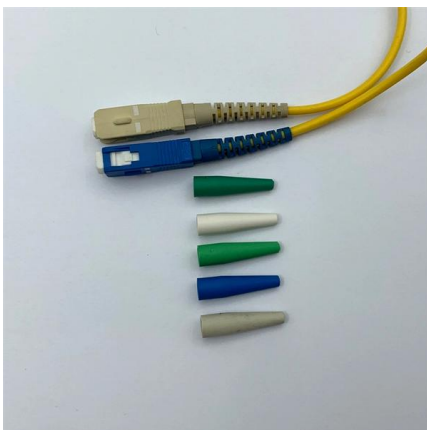


Optocouplers Selection Guide: Types, Features,

Video credit: myvideoisonutube / CC BY-SA 4.0
Types Optocoupler types are determined by the type of detector used, as described below. Certain types have

Industrial Optocouplers

Input 7 mA,80mm Length,DIN Rail Mounting Style. 41 more ready to ship on 5 September 2026. 5 additional inventory available.



Optocoupler Applications: Isolating High Voltage Circuits

Motor Control and Industrial Applications
Optocouplers are also extensively used in motor control applications. In industrial settings, motors often operate at high voltages, requiring an



Optocouplers/Isolators , Vishay

Optocouplers from Vishay feature high isolation voltages, wide temperature ranges, and a wide range of output configurations to provide a perfect fit for your application.

Optocouplers/Isolators



Contact Us

For datasheets, pricing, or custom high-speed optical interconnect solutions, please visit:

<https://www.syropy.com.pl>