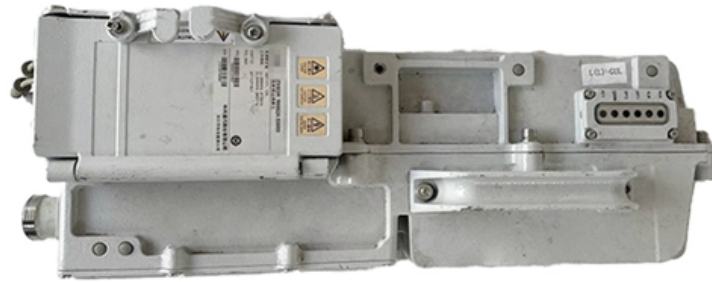


Optical module docking distance





Overview

Answer: 40KM and 20KM refer to the XFP transceiver maximum transmission distance, whether they can docking we need to see his other three parameters, wavelength, optical power, sensitivity. Transmission Distance: Transmission distance of optical modules is categorized into short, medium, and long ranges. The primary factors affecting the successful docking of optical transceivers are as follows: Wavelength Different wavelengths experience varying transmission loss and dispersion in the fiber, leading to different transmission distances at the same speed. Received optical power refers to the range of average optical power that the receiver component of the optical module can receive under a certain bit error rate (BER=10⁻¹²) condition. Li-Fi offers various benefits in comparison to RF-based communication: The Li-Fi GigaDock® uses light to provide high-speed data links over short distances.



Optical module docking distance



Is the XFP transceiver docked at different distances?

Answer: 40KM and 20KM refer to the XFP transceiver maximum transmission distance, whether they can docking we need to see his other three parameters, wavelength, optical power, sensitivity.

Diagnosing and Solving Common Optical Transceiver Failures

Unlock insights into optical transceiver issues: docking failures, troubleshooting steps, and protective measures for optimal performance and longevity.



Laser Distance Sensor for AMR: A Practical Selection Guide for

How to choose the right laser distance sensor for AMR navigation, docking, and obstacle avoidance. Learn key specs, ToF vs triangulation, and industrial integration tips.

Introduction to GPON Optical Modules and Their

2. Transmission Distance and Power Classes
GPON modules are categorized into different power classes based on their optical budget, which



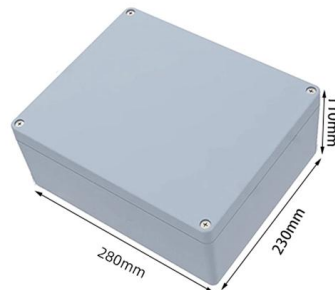
Long Distance Optical Module Characteristics and Application

Long-distance optical modules refer to optical modules with a transmission distance of more than 30km, which can meet network data transmission requirement. In the actual use of long-distance optical



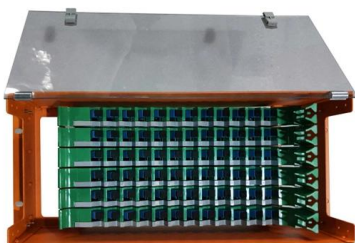
Diagnosing and Solving Common Optical Transceiver Failures

When docking long-distance and short-distance optical transceivers, an optical attenuator must be used to avoid damage to the transceivers. It is recommended that the supported distance of



Understanding Optical Modules: Working Principles,

Explore the working principles, structures, and performance metrics of optical modules, essential components of optical fiber communication systems. Learn





How to choose an optical fiber link and an SFP module?

What cables suit an SFP module? What distance can be there between SFP modules? And many other questions. The main advantages of optical fiber



"Where is the home fiber modem connected to the fiber"

What Factors affect the fiber optic cable distance? Many factors decide the fiber cable distance, but the key factors include the below six aspects. #1.

How to Estimate an Optical Module's Transmission Distance , FiberMall

PDF file

TI DLP® System Design: Optical Module Specifications

ABSTRACT The objective of this application note is to help product developers better understand optical module specifications and related system design considerations. This information helps expedite



Features and Applications of the 100G QSFP28

Discover the key features and applications of 100G QSFP28 Multimode optical transceiver modules in the context of cloud computing and 5G networks.



Reach Further, Faster: Your Ultimate Guide to Long-Range 10G Optical

Long-range 10G optical modules enable high-speed data over distances up to 80km. Learn about types, specs, compatibility, and choosing the right module.



LiFi - Optical wireless communication

The Li-Fi GigaDock® uses light to provide high-speed data links over short distances. In the context of Industry 4.0, it is a good fit for industrial applications.

What Is QSFP28 LR4? In-Depth Analysis of Long

When choosing a QSFP28 LR4 module, there are a few important factors to consider to get the best long-distance 100G link reliability. First, you



100G QSFP28 Optical Module Selection

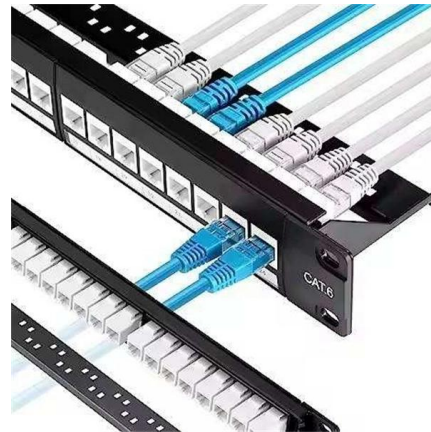


Guide: Medium to Long

This article tells you how to choose 100G QSFP28 modules for medium and long transmission distances, as well as the advantages of QSFP28 modules and why you should choose it.

Understanding Long Distance Fiber Optic Runs for New

This guide will break down the essentials, from selecting the right hardware to troubleshooting common issues that can arise in long-distance fiber runs.



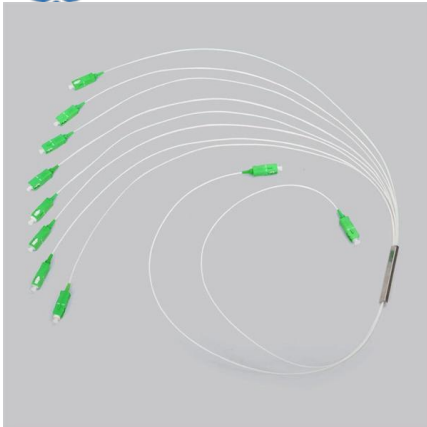
SFP Distance Explained: Real-World Range, Limits, and Optics

Understand SFP distance, fiber optic range, and real-world limits of SR/LR modules. Learn how wavelength, fiber type, and optics affect performance.

Design of Docking Interfaces for On-Orbit Assembly of

The docking port's ability to be quickly connected or disconnected within a translation tolerance of 23.5 mm and a tilt tolerance of 24° was verified.



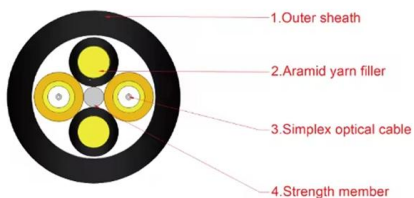


Fiber Optic Cable Distance: A Comprehensive Guide

Fiber optic cables are the backbone of modern communications, enabling high-speed data transfer over vast distances. Unlike traditional copper

Comprehensive Guide to Optical Transceiver

Systematic classification of optical modules by data rate, form factor, transmission distance, and fiber type.



SFP Fiber Optic Connector Types: LC, SC, MPO Explained

They do not define speed, distance, or protocol, but they determine how light enters and exits the SFP module and which fiber infrastructure can be used. From an architectural perspective, the connector

Comprehensive Knowledge Of Long-distance Optical

Optical modules are the most common optoelectronic converter components. In optical communication networks, transmission capacity is the





Optical Fiber Alignment: Precision Techniques for

Optical Fiber Alignment: Precision Techniques for Maximizing Signal Integrity in Fiber Optic Networks" In the intricate world of fiber optic

TR-3552: Optical network installation guide

Parts of a fiber optic link The three determining factors for the selection of fiber type and end optical transceivers (Tx/Rx) for a fiber optic link are: fiber link distance, application and data rate.



How to Estimate an Optical Module's Transmission

Optical modules distinct from one another in their transmission distance, a feature that should be taken into account in addition to other

SFP Optical Module Selection Guide for 2025: Key

Explore our comprehensive SFP optical module selection guide for 2025. Learn about crucial factors like data rate, distance, fiber type, and





LiFi - Optical wireless communication

LiFi - Optical Wireless Communication Light Fidelity (Li-Fi) technology wirelessly transmits data via light using a transmitter to switch a light-emitting diode (LED) on and off so fast, that it is not noticeable by

Contact Us

For datasheets, pricing, or custom high-speed optical interconnect solutions, please visit:
<https://www.syropy.com.pl>