

Optical module cable pull





Overview

To remove the cable, follow these steps: Attach an ESD-preventive wrist strap and follow its instructions for use. Press the release latch on the cable, grasp the connector near the connection point, and gently pull the connector from the transceiver. Do not pull on the jacket sleeve because this can compromise the fiber optic termination in the connector. Small Form-factor Pluggable modules (SFP module) are the workhorses of modern network connectivity, enabling flexible fiber optic or copper links between switches, routers, firewalls, and servers. Whether you're upgrading bandwidth, replacing a faulty unit, or reconfiguring your topology, knowing. ① Multimode fiber optic module: The pull tab is black, corresponding to a wavelength of 850nm, suitable for short-distance transmission (such as less than 2km).



Optical module cable pull



How to Install or Remove SFP, SFP+, QSFP, and XFP

To safely remove an SFP module, follow these steps: Disable the port in your network device settings or power off the device to avoid electrical

Fiber Optic Cable Pulling Advice

Fiber optic cable (optical fiber) nowadays is deployed everywhere to feed the insatiable bandwidth needs of mission-critical applications. However, fail



Pulling fiber-optic cable

2) In many runs, if the pulling distance is short enough and the pathway straight enough, fiber-optic cable can be pulled by hand, without the use of special



I am long Clearfield, Inc. \$CLFD Here's my thesis: I've been

Instead, they are forced to pack more fiber into their existing footprint without causing a meltdown of tangled glass cables and trapped heat And the #1 thing DC's can't afford to have is



Removing a Cable from an SFP, SFP+, or QSFP+ Transceiver

Press the release latch on the cable, grasp the connector near the connection point, and gently pull the connector from the transceiver. Insert a dust plug into the cable-end of the transceiver.



Plastic SFP Cable Pull Tab For Optical Module Housing

SFP Cable Pull Tab is made using injection molding processes, and injection molding can produce parts of various sizes and complexity. Small features,



OPTICAL TRANSCEIVER MODULE EQUIPPED WITH AN

An optical transceiver module is provided with an elongated delatching pull tab that enables an optical transceiver module to be easily delatched and pulled from a cage without having to first





How to Install and Remove Optical Modules Safely

Never pull the cable itself to remove the connector. Immediately place dust caps on both the disconnected cable connector and the exposed optical



Cable Pulling

Prevent damage when pulling fiber optic cable. The glass within the cable is extremely fragile. Although the cable protects the fiber, it is fairly easy to break the fiber when pulling. Using these tools and

The Right Fiber Pulling Eye Makes All the Difference

The Right Fiber Pulling Eye Makes All the Difference The installation process can be hard on fiber optic cabling. Cables or trunks can be damaged



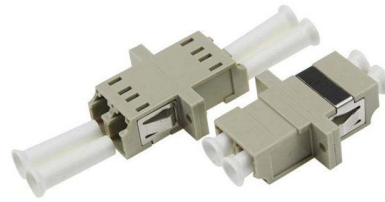
Meaning of Optical Module Pull Tap Colors

The color of the optical module pull tap is not just for aesthetics. Its core function is to quickly identify the module's applicable fiber type, wavelength, and function.



Cable Pulling Systems

The quality tools from Katimex® are easy, safe and quick to use. For comfort and precision with every cable pull in domestic-, underground- and fiber optic installation. Discover our specialists for various



Meaning of Optical Module Pull Tap Colors

Optical module pull tab colors serve as a visual language in network operations and maintenance. Their core value lies in simplifying module selection and troubleshooting. Colors can

SimpleGrip Fiber Cable Pulling Eye Hook

SimpleGrip Fiber Cable Pulling Eye , Ideal for installing pre-terminated fiber cables through conduit and inside walls. The SimpleGrip is



Installing and pulling Fibre Optic cables

Installing and pulling Fibre Optic cables
Installation methods for both wire cables and Fibre Optical cables are similar. Fibre cable can be pulled with much greater force than copper wire if you pull it

101 Guidelines for Fiber Optic Cable Installation



Never directly pull on the fiber itself. Fiber optic cables have Kevlar aramid yarn or a fiberglass rod as their strength member. You should pull on the fiber cable



0.13 in to 0.56 in, 28 in Mesh Lg, Fiber Optic Cable Pulling Grip

Looking for HUBBELL WIRING DEVICE-KELLEMS, 0.13 in to 0.56 in, Fiber Optic Cable Pulling Grip? Find it at Grainger ®. With over one million products and 24/7 customer service we have

Optical Module Pull Tab Colors: The Ultimate Guide to

Description: Decode optical module pull tab colors for SFP, QSFP+, BIDI, and CWDM modules. Learn how color identifies fiber type, wavelength, and



How to "PULL" Fiber Optic Cable Correctly

Cable installers always talk about & ldquo;pulling& rdquo; fiber optic cable because that is how they install underground cable in conduit. In most



How to Protect Fiber Optic Cables - A Beginner's Guide

Fiber optic cables are widely used in modern optical networks, and knowing how to protect fiber optic cables is a basic but often overlooked part of daily operation. They connect optical

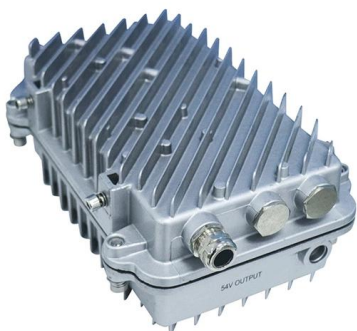


Optical Transceiver Module Installation And Removal

Before you pull out the SFP module, you must press the sliding tab to release the SFP module. If you pull on the SFP module without releasing the

Cable Pulling

The Fiber Optic Cable Puller from Condux sets the new standards for safe, accurate pulling of fiber optic cables. Only the Condux puller can offer load cell torque input for the most accurate tension



Best Practices for Pulling Fiber Optic Cable

Fiber optic cable is surprisingly strong, durable and pliable; however, several best practices should be followed to ensure a successful cable installation. This article



Pulling Fiber Data Cabling

How to pre-lubricate a conduit for pulling fiber optic cabling Pulling network cable: 200 Gbps or bust! (moving 06) Pulling Cable Underground Made Easy With Runpotec Profi Set How Does LIGHT Carry



Fiber Optic Cable Pulling Advice

During the process, installers should avoid fiber cable damage, despoiling it properly, and take pulling force into account. Since the real optical fiber pulling

Pulling Fiber Optic Cable

Fiber optic cable is surprisingly strong, durable and pliable; however, several best practices should be followed to ensure a successful cable



Multi-Pack

Multi-Packs , SimpleGrip Fiber Cable Pulling Eye - 2, 4, 6, 10, 12 & 24 Packs , Ideal for installing pre-terminated fiber cables through conduit and inside walls.



Meaning of Optical Module Pull Tab Colors

Optical module pull tab colors serve as a visual language in network operations and maintenance. Their core value lies in simplifying module selection and troubleshooting.



Optical Module Pull Tab Colors: The Ultimate Guide to

Optical Module Pull Tab Colors: Complete Guide to SFP, QSFP, and CWDM Coding Description: Decode optical module pull tab colors for SFP,

Contact Us

For datasheets, pricing, or custom high-speed optical interconnect solutions, please visit:
<https://www.syropy.com.pl>